

acp  
acerp

2  
0  
1  
3

i  
a  
f  
o  
r



A satellite photograph of Earth from space, showing the Asian continent and the surrounding Pacific Ocean. The image is taken from a high angle, showing the curvature of the planet. The landmasses are in shades of green and brown, while the oceans are a deep blue. White clouds are scattered across the scene. The text 'iafor' is in the top right corner, and 'a global alliance thinking for asia' is in the bottom right corner.

iafor

a global alliance  
thinking for asia



GLOBALLY RESPONSIBLE LEADERSHIP INITIATIVE



For the latest information about IAFOR's partners, please see our website at [www.iafor.org](http://www.iafor.org) or contact the IAFOR office

IAFOR would like to thank its institutional academic and conference partners, as we create a global alliance... why not join us?



acp2013 acerp2013





# acp/acerp2013

## letter of welcome

On behalf of the the International Academic Forum, and its global univeristy partners,

The Third Asian Conference on Psychology and the Behavioral Sciences is held again this year with the Third Asian Conference on Ethics, Religion and Philosophy, as we invite scholars and practitioners from around the world to the great city of Osaka for a long weekend of intellectual discovery and challenging discussion. The strength of IAFOR's international, interdisciplinary, intercultural and inter-professional conferences is in the way in which delegates from a wide variety of backgrounds can form different research synergies. We expect the conference theme of "Connectedness and Alienation" to be informed by the lenses of science, religion and philosophy, as we are encouraged to reflect upon how we think, reason, believe and behave.

Being connected has become much easier in the 21st century. The digital revolution, the internet, social network sites, skype, and the ubiquity of mobile phones have helped us to reconnect with long-lost family and friends, to make new relationships even with people we haven't met in person, and to stay connected despite geographical separation. However, this revolution in convenience and communication has not necessarily helped us to be truly connected. Social connectedness refers to the quality and quantity of relationships with others including family, friends, colleagues, and the wider community, through various modes of contact, and the resulting benefits. Being truly socially connected involves not only the number of connections with important people in our lives, but also factors such as trust, disclosure, loneliness and isolation. Other aspects of connectedness are also equally as important as the social: psychological connectedness with our multiple, changing selves gives us our sense of identity over space and time; connectedness with our environment, be it the natural environment or our social ones, such as school, work, or community provides us with a sense of belonging; spiritual connectedness in the transcendental sense provides meaning in our lives; and moral connectedness, being true to our values helps us to maintain our integrity in our complex lives.

We hope and expect that the conference theme will excite interesting new interpretations and explorations, inspire the development of collaborative links and connections between attendees, as we learn from each other in this international academic forum.



**Stuart D. B. Picken**

Chairman, IAFOR IAB



**Dr Joseph Haldane**

Executive Director, IAFOR

# acp/acerp2013



## letter of welcome

Dear Participants,

Welcome to the Third Asian Conference on Psychology and the Behavioral Sciences, and the Third Asian Conference on Ethics, Religion and Philosophy. It is a pleasure for us to meet you all here, in the pleasant Japanese trading city of Osaka. Some of you are indeed familiar with the surroundings, some of you are returning participants, some of you may be joining us for the first time, and perhaps enjoying your first experience of Japan. The International Academic Forum (IAFOR) has organized the conference in the best possible way so that all delegates have as many opportunities as possible to exchange ideas during the academic sessions, to enjoy discussions during the informal gatherings, to experience the traditional and modern Japanese cultural blend, and to indulge in the famous Kansai cuisine.

Our conference theme this year is "Connectedness and Alienation: The 21st century enigma." This is indeed an issue that needs our attention in order to find solutions. While progress in modern telecommunications has reached its advanced level to bring people closer together, alienation in society continues to exist and in some cases have even increased. While almost every member of a modern family has a mobile phone, the quality of communication among them remains the same, and sometimes even more distant. While communication access in the social care system in Japan is one of the best in the world, cases of loneliness, primarily among the elderly, has increased in a number of areas. There are so many things we need to pay attention to for our present and future life conditions. However, we may also need to reconsider preserving our traditions that used to keep our family intact in order to reduce the suffering resulting from being alienated.

I do believe that this year's conference will have rich and extended discussions on human interpersonal relations that we need to anticipate in the near future. I am glad to know that the numbers of papers to be presented have increased significantly over the years, which represents our concern and active participation in efforts to improve our life in society and on our beloved planet. There are so many interesting topics to discuss and there are many options for you to attend. Sometimes it may not be easy to choose which session to attend, but of course there will be time for you to gather in roundtable discussions or in your own extended available time. The Ramada hotel provides various pleasant corners for guests to have their own conversations, and there are many interesting areas surrounding the hotel for people to mingle.

Please take this good opportunity to exchange ideas, concepts, and experiences which may open new opportunities to conduct more research, to develop joint research across cultures, between nations, across disciplines, and to find solutions and new ideas to help people avoid becoming alienated so that we are more unified in developing our lives together.

Have a pleasant time in Osaka, and we hope this conference will be beneficial to all of us. Have a pleasant journey home following the conference, and please return in the following years to share more research.



**Monty Satiadarma**

Clinical Psychologist  
Former Rector, Tarumanagara University, Indonesia  
Conference Co-Chair, ACP 2013



**Dexter Da Silva**

Professor of Educational Psychology  
Keisen University, Japan  
Conference Co-Chair, ACP 2013



# conference at a glance

## Registration and Information

The Registration and Information Desk will be open from 15:00-17:00 on Thursday afternoon, and from 8:00-18:00 on Friday, and 8:30-18:00 on Saturday and Sunday. IAFOR staff and local volunteers will happily assist you in any way they can.

## Thursday March 28, 2013 – Daytime

### 8:45-18:00 Pre-Conference Tour of Osaka

This is ticketed at JPY 7,000 and there are a limited number of places. For more information, please email us at [conferences@iafor.org](mailto:conferences@iafor.org). Please meet in the lobby at 8:30 for a prompt 8:45 AM departure.

## Thursday March 28, 2013 – Evening

### 18:00-19:30: Conference Welcome Reception & Sake Tasting (16F Lampada Bar)

Come and enjoy a few glasses of beer, wine, sake, or a choice of soft drinks if you prefer, to open the conference. You can mix with fellow delegates, network, and enjoy the night view of Osaka from the 16F Lampada Bar. No Need to Reserve: Everyone Welcome.

## Friday March 29, 2013 – Daytime

### 9:00-12:15: Welcome, Featured and Keynote Speaker Session (Aoi Room 2F)

#### 9:00-9:30: Welcome Addresses

Dr Joseph Haldane, IAFOR Executive Director  
Professor Dexter Da Silva, ACP Conference Co-Chair

#### 9:30-10:30: ACP/ACERP Keynote Speaker 2013: Dennis McInerney

Chair Professor of Educational Psychology and Council Member,  
The Hong Kong Institute of Education, HKSAR

10:30-11:00: Break

#### 11:00-11:45: ACERP Featured Speaker: Lowell Sheppard

Asia-Pacific Director, The HOPE International Development Agency, Japan

#### 11:45-12:00: Osaka Akutagawa High School Taiko Drum Performance

12:00-13:00: Break

#### 13:00-14:30: Parallel Session 1 (various rooms) & Poster Session

14:30-14:45: Break

#### 14:45-16:15: Parallel Session 2 (various rooms)

16:15-16:30: Break

#### 16:30-17:30: ACP Featured Speaker: Jiro Takai (Sakura Room 2F)

Professor of Social Psychology, Nagoya University, Japan

Thursday, March 28

Friday, March 29



Friday, March 29, 2013 – Evening

**18:30-22:00: A Night Out in Osaka: Official Conference Dinner**

The official conference dinner will be held in a downtown Osaka izakaya, and provide a relaxed and enjoyable environment to meet and network with other delegates. This is ticketed at JPY 5,000 and there are a limited number of places.

The party will leave the lobby at 18:30, so please be there in good time. The venue is a short walk away. The conference dinner will begin at 19:00 at the venue, near Umeda Station, and will finish at 22:00. Afterwards, a group will be lead back to the hotel or you can continue the party with other delegates.

Saturday, March 30, 2013 - Daytime

**9:00-10:30: Parallel Session 1 (various rooms)**

10:30-10:45: Break

**10:45-12:15: Parallel Session 2 (various rooms) & Poster Session**

12:15-13:15: Break

**12:15-13:15: Japanese Tea Ceremony Demonstration**

**13:15-14:45: Parallel Session 3 (various rooms)**

14:45-15:00: Break

**15:00-16:30: Parallel Session 4 (various rooms)**

16:30-16:45: Break

**16:45-17:15: ACP Featured Speaker: Monty Satiadarma (Sakura Room 2F)**

**17:15-18:15: ACP Featured Speaker: Sandra Neill (Sakura Room 2F)**

Sunday, March 31, 2013 - Daytime

**9:30-10:30: Parallel Session 1 (various rooms)**

10:30-10:45: Break

**10:45-12:15: Parallel Session 2 (various rooms) & Poster Session**

12:15-13:15: Break

**12:30-13:00: Japanese Calligraphy Demonstration**

**13:15-14:45: Parallel Session 3 (various rooms)**

14:45-15:00: Break

**15:00-16:00: Parallel Session 4 (various rooms)**

**16:15-16:45: Conference Closing Session and Conference Photograph (Kiku Room)**

Conference Co-Chairs: Monty Satiadarma and Dexter Da Silva

Post-Conference: Monday, April 1 2013

**8:30-18:00 Post-Conference Tour of Kyoto**

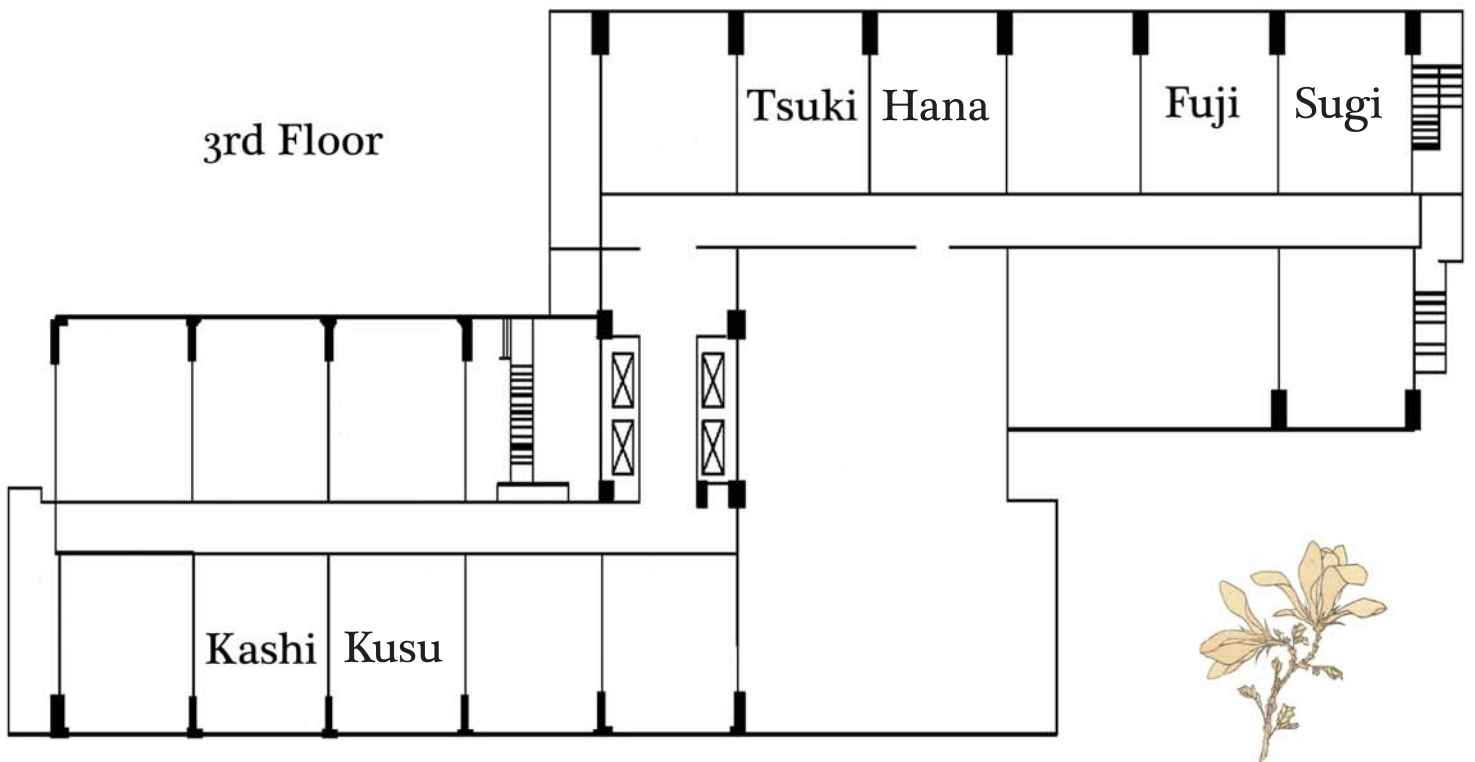
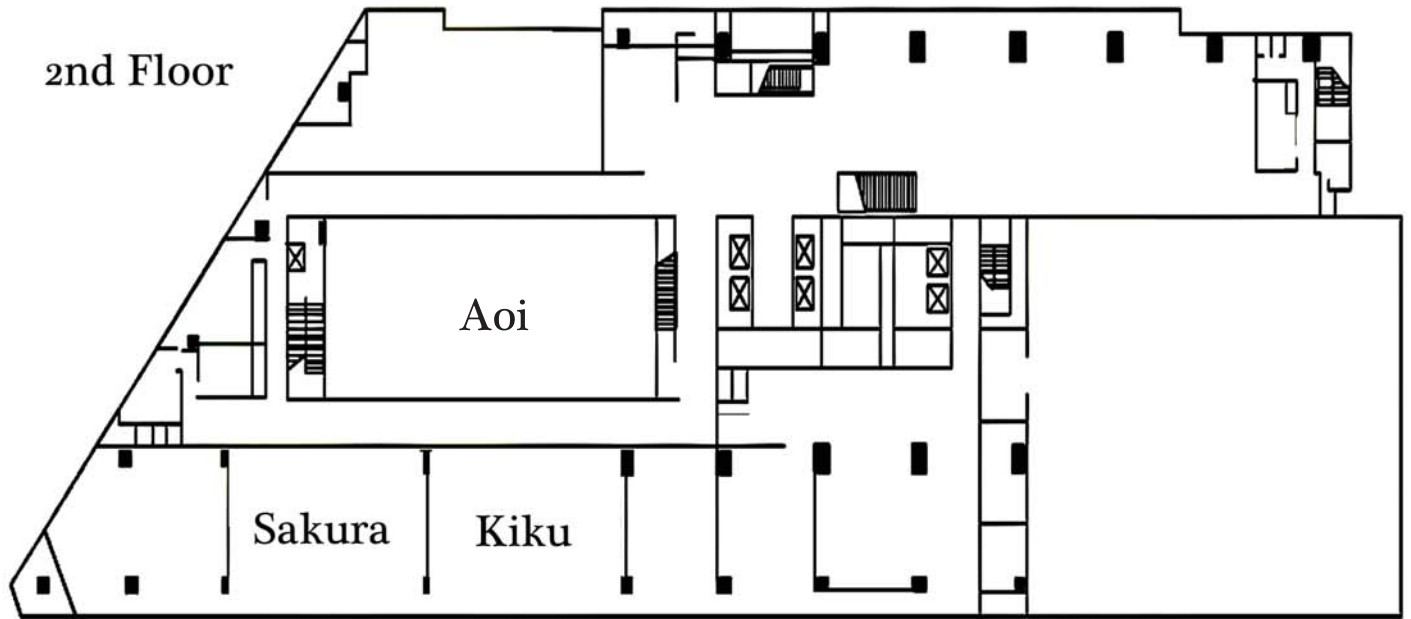
This is ticketed at JPY 10,000 and there are a limited number of places. For more information, please check with the Registration and Information Desk. Please meet in the lobby at 8:15 for a prompt 8:30 AM departure.



conference at a glance

Friday March 29  
Saturday, March 30  
Sunday, March 31  
Monday, April 1

# Ramada Osaka Conference Map



## Information and Registration

The Conference Registration and Information Desk will be situated in the Kiku base room on the second floor of the hotel throughout the conference. If you have already paid online, or by bank transfer, you will be able to pick up your registration pack. This will include a tote bag, the conference programme, and your official certificate of attendance and receipt of payment. At this time you will also be given a name card, and lanyard.

For those wishing to pay on the day, please note that we will not be able to process credit cards.

**Conference Welcome, Featured and Keynote Session: Friday 9:00-12:00**  
**Conference Featured Sessions: Friday 16:30-17:30 & Saturday 16:45-18:15**

The Plenary session will be held on Friday morning, with the event beginning at 9:00 in the Aoi Function Room on the second floor. Please arrive in good time if you wish to attend the session.

There will be an interval after the first keynote address and complimentary refreshments and light snacks will be served.

The Featured Panel session will be held on Friday and Saturday afternoons in the Sakura Function Room. Please arrive in good time if you wish to attend the session.

## Concurrent Speaker Sessions

Concurrent Sessions will run on Friday afternoon, and on Saturday and Sunday until 16:30. They are generally organized into streams. Sessions include two, three or sometimes four presenters. Each presenter has thirty minutes including Q and A time. The session length reflects the number of presenters.

## Presentations and Equipment

All rooms will be equipped with a MacBook computer pre-installed with Powerpoint, as well as a screen and an LCD projector. If you wish you may directly link your own laptop, although we advise you to use the computer provided by plugging in your USB.

We recommend that you bring two copies of your presentation in the case that one fails, and suggest sending yourself the presentation by email as a third and final precaution.

## Session Chairs

Session Chairs are expected to introduce themselves and other speakers (briefly), and ensure that the session begins and ends on time, and that the time is divided fairly between the presentations (see below). Each presenter should have no less than 30 minutes in which to present his or her paper, and respond to any questions. We recommend 20 minutes for your paper and 10 minutes for Q and A. Please follow the order in the programme, and if for any reason a presenter fails to show, please keep to the original timeslots as delegates use the programme to plan their attendance.

## A Polite Request to All Participants

Participants are requested to arrive in a timely fashion for all addresses, whether to their own, or to those of other presenters. Presenters are reminded that the time slots should be divided fairly and equally between the number of presentations, and that they should not overrun. The session chair is asked to assume this timekeeping role.

## Poster Sessions & Poster Requirements

The poster frames are B1 and so it is recommended that posters be no larger than B1 (707mm x 1000mm/27.8 inches x 39.4 inches). A1 (594mm x 841mm/23.4 inches x 39.4 inches) is also fine. If your poster is oversized, then we will be able to provide tape.



# conference guide



# conference guide

## Internet

There will be wireless Internet connection throughout the second and third floors and other public spaces in the hotel. However, this can be temperamental and we would suggest that you do not rely on live connection for your presentation, or have back up screen shots in the case of internet down time.

For your convenience, there will also be a limited number of computers in the Kiku base room.

## Printing

There will be a printer behind the information desk in the base room, and we are able to offer a complimentary printing service of up to ten A4 sheets should you need this. Please be advised that printing may not be available in peak times.

## Badges

When you check in, you will receive a conference package, which includes your name badge. Wearing your badge IS required for entrance to the sessions. If you lose your badge it can be replaced for a fee of JPY 5000. You must wear your badge at all times during the Conference.

If you are not wearing your badge, security will stop you and ask you to show your ID and evidence that you are registered. Those unable to show proof will be escorted from the Conference by security.

There are (4) colors of badges indicating the type of conference participant:

RED: Presenters and General Audience

YELLOW: Keynote and Featured Speakers

BLUE: Conference Exhibitors and Affiliates

BLACK: IAFOR Staff & Board Members

## What to Wear & Bring

Attendees generally wear business casual attire. You may want to bring along a light jacket or sweater, as the temperature in meeting rooms is often difficult to control.

## Security

The Japanese police have been enforcing random passport and identification checks. If you do not have identification when stopped, the police will detain you. There may also be a financial penalty. For the enjoyment of all participants, inappropriate behavior will not be tolerated and violators will be removed from the premises. Do not leave personal items or conference bags unattended anywhere in the Ramada Osaka as this will be taken away by security.

## Smoking

The Ramada has implemented a Clean Indoor Air Act; therefore, smoking is not permitted in any of the conference rooms or the ballroom. Please smoke only in designated areas. There is a smoking room on the second floor at the top of the escalators.

## Photo/Recording Waiver

There will be photography, audio and video recording at the conference. By entering the event premises you give consent to the use of your photograph, likeness or video or audio recording in whole or in part without restriction or limitation for any educational, promotional, or any purpose for distribution.

## Refreshment Breaks

Complimentary coffee, tea, and water is available throughout the day in the Kiku base room. Light snacks will be provided twice a day, for one hour periods in the middle of the morning and then again in the afternoon. All other meals, including lunch and dinner, can be purchased at any of the restaurants or convenience stores in and around the Ramada Osaka.

## Meals & Drinks

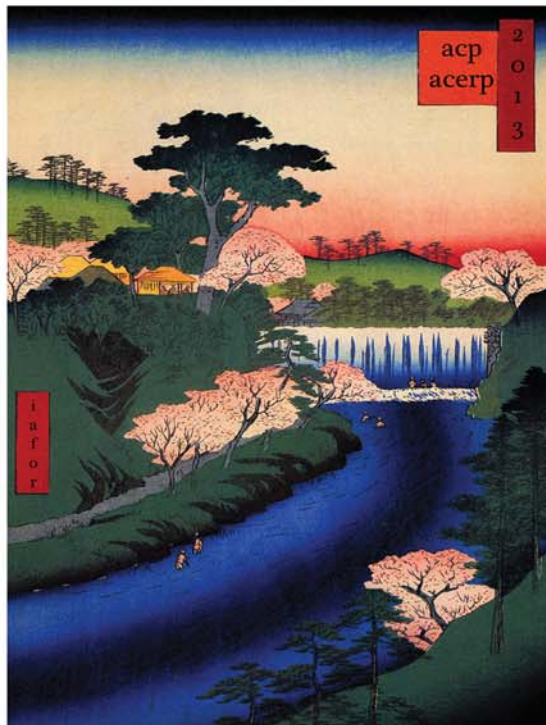
As a conference registrant, if you booked through the conference site and if you are staying at the Ramada then the buffet breakfast is included in your room price. This is a good occasion to start the day and meet other delegates. You must book through the venue page of the website to enjoy this arrangement.

## 20% Off Food and Drink

Conference Delegates are entitled to a 20% discount at the Neuf-Neuf Dining and Café (breakfast, lunch and dinner), The Tenzan teppan-yaki (lunch and dinner), the Lampada Restaurant (lunch and dinner) and très très bon (lunch and dinner). Just show your badge to receive this discount.



# conference guide

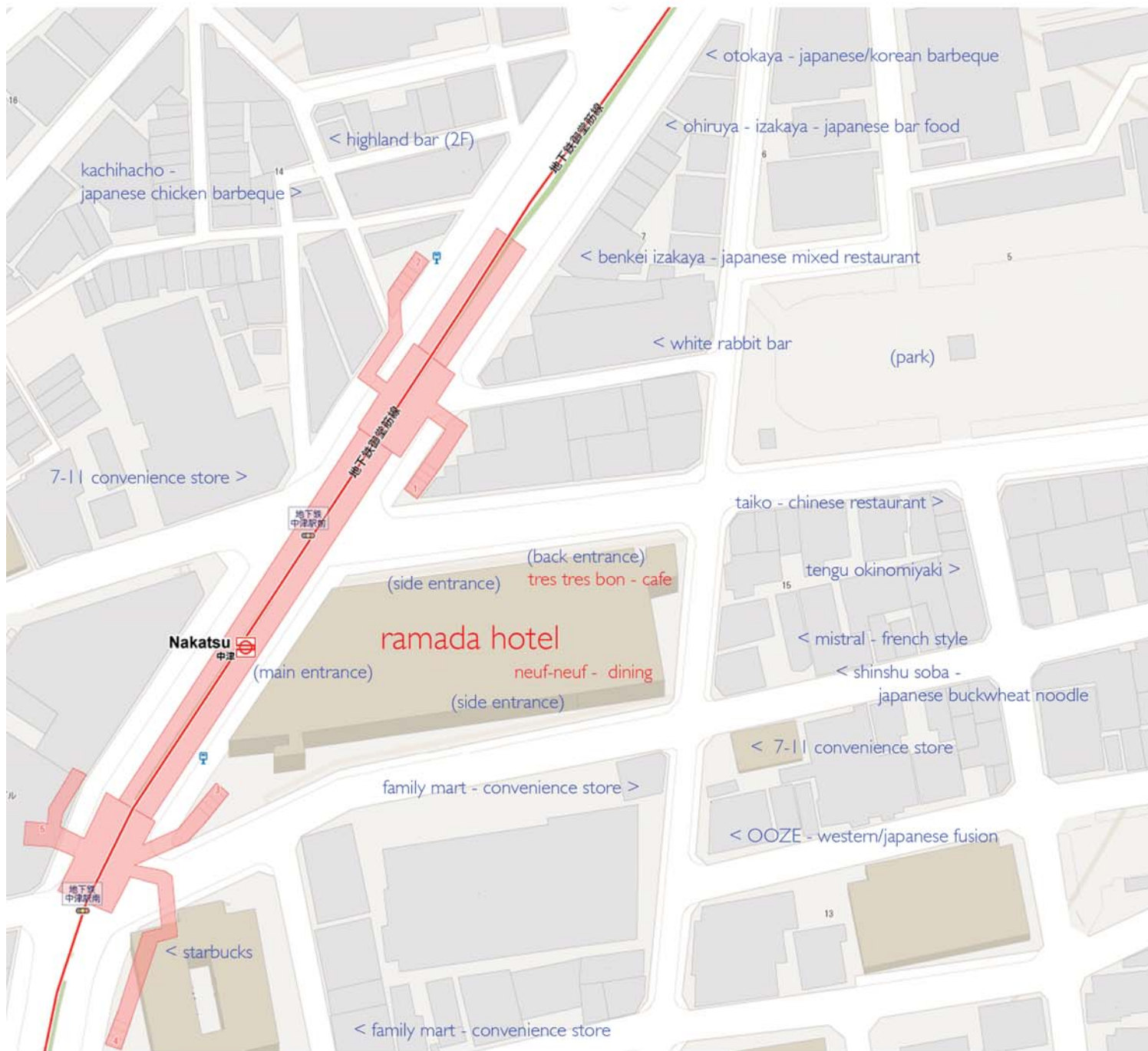


## CONFERENCE PROCEEDINGS

The Conference Proceedings are published on the IAFOR website ([www.iafor.org](http://www.iafor.org)), and can be freely accessed as part of the research archive.

All authors may have their full paper published in the online conference proceedings. Full text submission is due by May 1 2013 through the online system. The proceedings will be published on June 1 2013.

Authors will have pdf copies of their offprints emailed to them by the IAFOR office by the end of June 2013.



## eat and drink around the ramada hotel

If you fancy going outside the conference venue for a quick snack, there are a number of different options throughout the day and evening within a few minutes walk. For more information and more suggestions, please ask one of our local volunteers, who will be happy to help!



GAS

中津出口  
豊崎2

入口

新御堂筋  
Shin-Midosuji

日本  
レンタカー  
Nippon  
rent-a-car

梅田センタービル  
Umeda Center Bldg

EST1

観覧車  
Giant Ferris Wheel

HEP FIVE

阪急百貨店  
Hankyu Department Store

阪急百貨店  
Hankyu MEY's

阪急百貨店  
Hankyu Department Store

阪急百貨店  
Hankyu Department Store

阪急百貨店  
Hankyu Department Store

阪急百貨店  
Hankyu Department Store

阪急百貨店  
Hankyu Department Store

阪急百貨店  
Hankyu Department Store

阪急百貨店  
Hankyu Department Store

阪急百貨店  
Hankyu Department Store

阪急百貨店  
Hankyu Department Store

阪急百貨店  
Hankyu Department Store

阪急百貨店  
Hankyu Department Store

曾根崎警察署  
Sonzaki Police Station

旭屋書店  
Asahiya Book Store

お初天神  
Ohatu-Tenjin (Shrine)

松竹会館  
Shochiku Kakan

大塚ビル  
Otsuka Bldg

大塚ビル  
Otsuka Bldg

大塚ビル  
Otsuka Bldg

大塚ビル  
Otsuka Bldg

大塚ビル  
Otsuka Bldg

大塚ビル  
Otsuka Bldg

大塚ビル  
Otsuka Bldg

大塚ビル  
Otsuka Bldg

大塚ビル  
Otsuka Bldg

大塚ビル  
Otsuka Bldg

大塚ビル  
Otsuka Bldg

大塚ビル  
Otsuka Bldg

大塚ビル  
Otsuka Bldg

大塚ビル  
Otsuka Bldg

大塚ビル  
Otsuka Bldg

大塚ビル  
Otsuka Bldg

大塚ビル  
Otsuka Bldg

大塚ビル  
Otsuka Bldg

大塚ビル  
Otsuka Bldg

大塚ビル  
Otsuka Bldg

大塚ビル  
Otsuka Bldg

大塚ビル  
Otsuka Bldg

大塚ビル  
Otsuka Bldg

大塚ビル  
Otsuka Bldg

大塚ビル  
Otsuka Bldg

大塚ビル  
Otsuka Bldg

大塚ビル  
Otsuka Bldg

大塚ビル  
Otsuka Bldg

大塚ビル  
Otsuka Bldg

大塚ビル  
Otsuka Bldg

大塚ビル  
Otsuka Bldg

大塚ビル  
Otsuka Bldg

大塚ビル  
Otsuka Bldg

大塚ビル  
Otsuka Bldg

大塚ビル  
Otsuka Bldg

大塚ビル  
Otsuka Bldg

大塚ビル  
Otsuka Bldg

大塚ビル  
Otsuka Bldg

大塚ビル  
Otsuka Bldg

大塚ビル  
Otsuka Bldg

大塚ビル  
Otsuka Bldg

大塚ビル  
Otsuka Bldg

大塚ビル  
Otsuka Bldg

大塚ビル  
Otsuka Bldg





# Conference Chairs, Keynote & Featured Speakers





# conference chairs



## **Professor Monty Satiadarma**

Clinical Psychologist and Former Rector,  
Tarumanagara University, Indonesia

## **Professor Dexter Da Silva**

Professor of Educational Psychology,  
Keisen University, Japan

**Monty Satiadarma** is an academic and psychologist who has lectured around the world, and who continues to practice in his native Indonesia. He was the Dean of the department of psychology at Tarumanagara University from 1997-2005, and Rector of the University from 2008-2010.

Dr Satiadarma has a particular interest in educational psychology, and in music and art therapy, methods with which he treated survivors of the Indonesian tsunami on behalf of the International Red Cross and the United Nations. He is a board member and area chair of the International Council of Psychology, and a founder and board member of the Asian Psychology Association.

**Professor Satiadarma will be giving a featured presentation on Saturday between 16:45 and 17:15 in the Sakura Room (2F), “Münchhausen by Internet: Psychological Concerns in Modern Communication Systems”.**

**Dexter Da Silva** is currently Professor of Educational Psychology at Keisen University in Tokyo. He has taught EFL at junior high school, language schools, and universities in Sydney, and for the past two decades has been living and teaching at the tertiary level in Japan.

Professor Da Silva was educated at the University of Sydney (BA, Dip. Ed., M.A.), and the University of Western Sydney (Ph.D.). He has presented and co-presented at conferences in Asia, Australia, Europe and the U.S., and written or co-written articles and book chapters on education-related topics, such as trust, student motivation, autonomy, and content-based language teaching. He is a past editor and current associate editor of *On CUE Journal*, regular reviewer for conferences and proceedings, and recent co-chair of the 2011 CUE Conference on Motivation.

## Professor Dennis McInerney

Chair Professor of Educational Psychology and Council Member  
The Hong Kong Institute of Education, Hong Kong SAR



keynote speaker

**Professor Dennis McInerney** began his career as a primary and secondary teacher in Sydney, Australia and then joined a teachers college in 1975. Professor McInerney progressed from there to a variety of academic and research posts at the University of Western Sydney, The National Institute of Education, Nanyang Technological University, Singapore, and The Hong Kong Institute of Education where he served for a period as Associate Vice President (Research and Development).

Professor McInerney began his research career with his B.Ed and M.Ed (Hons) theses examining the development of multiculturalism within Australian schools. This was followed by his doctoral research examining the motivational determinants of school achievement for non-traditional Aboriginal students in New South Wales. From these early research roots Professor McInerney has developed an extensive research agenda examining motivation, learning and self-processes among a diverse range of cultural groups including Navajo and Yavapai Indians, remote Aboriginal groups in the Northern Territory of Australia, Chinese in Hong Kong, and Lebanese in Australia. The major focus of these studies has been the psychological determinants of school engagement of underachieving minority groups. These studies have been supported by a range of competitive grants.

Professor McInerney has published over 200 research articles, edits two international research series, *Research on Sociocultural Influences on Motivation and Learning* (Vols 1-10) and *International Advances in Self Research* (Vols 1-3). He has written major textbooks including *Educational Psychology: Constructing Learning* (Pearson 5th Edition, 2010), *Helping Kids Achieve Their Best: Understanding and Using Motivation in the Classroom* (Allen & Unwin, 2000 and republished by Information Age Publishing, 2005), and *Publishing Your Psychology Research* (Sage and Allen & Unwin, 2001).

**Professor McInerney will be giving a Keynote presentation on Friday between 9:30 and 10:30 in the Aoi Room (2F), "Harnessing the Power of Social Forces for Healthy Self Development and Successful Engagement in Education".**



Friday, March 29, 2013

Keynote Speaker:  
Aoi Room (2F)

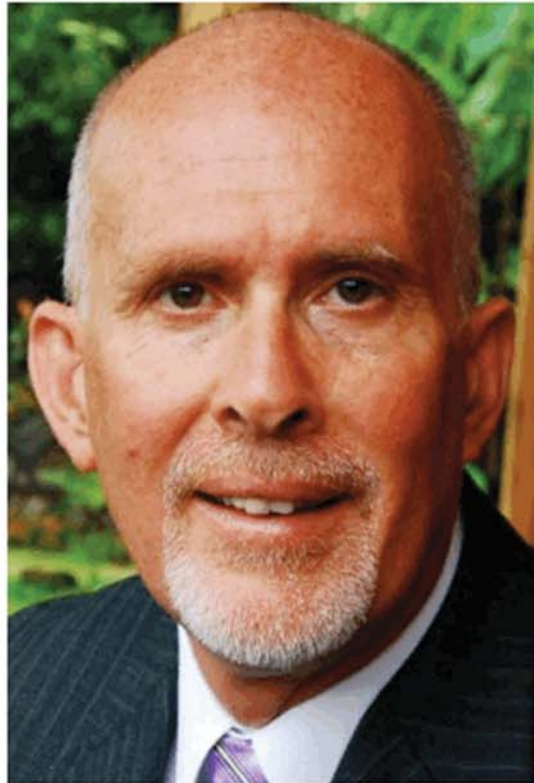
9:30-10:30



## Lowell Sheppard

Asia Pacific Director, The HOPE International Development Agency, Japan

featured speaker



**Lowell Sheppard** is Asia Pacific Director of the HOPE International Development Agency, an organization focused on working with the world's neglected poor in their quest to climb out of poverty.

Aside from his 35-year involvement with HOPE, Lowell has dedicated much of his life to social and environmental improvement projects throughout the world. He was the chairman of the Whose Earth initiative in the United Kingdom, and was the founding chairman of Novimost, a non-government organization responding to the needs caused by war in the Balkans. He was also CEO of one of the United Kingdom's largest youth charities and an executive member of Spring Harvest, an annual Christian festival which attracts more than 60,000 people each Easter, and raises more than one million dollars for charities every year. A fellow of the Royal Geographic Society, Mr Sheppard is the author of six books, which reflect his diverse intellectual interests, and life experience. His latest book, *Boys Becoming Men*, examines the importance of rites of passage, including adventures, for children becoming adults.

Since March 2011 Lowell has been involved in Tohoku working with remote communities in the restart of small businesses, particularly, but not exclusively, those focused on food production following the triple disaster of March 11, 2011.

Lowell is a noted public speaker, and has given lectures at both undergraduate and postgraduate levels on Corporate Social Responsibility and Sustainability.

Friday, March 29, 2013

Featured Speaker:  
Aoi Room (2F)

11:00-11:45

## Professor Jiro Takai

Secretary General of the Asian Association for Social Psychology  
Professor of Social Psychology, Department of Psychology and Human Developmental Sciences,  
Graduate School of Education and Human Development, Nagoya University, Japan



featured speaker

**Jiro Takai** is professor of social psychology at Nagoya University, and received his PhD from the University of California, Santa Barbara. He has served in the executive committees of the Japan Society for Social Psychology, the Japan Group Dynamics Society, the Japan Intercultural Education Society, the Communication Association of Japan, and the Japan-US Communication Association (affiliate of National Communication Association).

Although he was born in Japan, he spent 15 years as a youth growing up in Canada, and has also spent two years living in the United States. Because of such a background, he has an interest in cross-cultural matters, particularly in the context of interpersonal communication as well as research interests in interpersonal competence, self-presentation and Multi-faceted self concept.

Professor Takai will be giving a Featured presentation on Friday between 16:30 and 17:30 in the Sakura Room (2F), “When Japanese Are Not Japanese: Being Betrayed by Japanese Samples in Cross-cultural Comparisons”.



Friday, March 29, 2013

Featured Speaker:  
Sakura Room (2F)

16:30-17:30



featured speaker



## Sandra Neil

Clinical Psychologist and Family Psychologist Director  
The Satir Centre of Australia, Fellow, The Australian Psychological Society  
World Area Chair Co-ordinator, The International Council of Psychologists



**Sandra Neil** has 45 years experience as a Clinical Psychologist, Family Psychologist And Individual, Marital, and Group Psychotherapist. For the International Council of Psychologists (ICP), she served as President Elect 1997, President 1998, and Past-President 1999. She also serves as ICP World Area Chair Coordinator 2000-2014. She has conducted professional workshops on the family, and Human Rights Summits throughout the world. She was Convener of the Scientific Program in Melbourne, Australia, for the ICP's Annual Convention in 1997, and IAAP Human Rights World Summit July 2010, Melbourne, Australia.

The Founder and Director of the Satir Centre of Australia, Dr Neil is interested in a wide range of clinical problems and therapeutic approaches; and conducts a full-time private multicultural psychology practice in Melbourne, Australia, in addition to her extensive international work. She received specialised training in both psychiatry and psychology at St Vincent's Hospital, Prince Henry's Hospital, and the University of Melbourne, which awarded her a PhD for her research into psychotherapy in obesity and body image problems.

Having published many books, articles, book reviews, television and press interviews in the last 45 years, Dr Neil has also been Convener of all the Human Rights World Summits for the ICP at its annual conventions between 1983 and 2011. In 2011 she organised the Scientific Programme for The International Council of Psychologists annual Convention in Washington D.C 29th July – 2nd August and in 2012 she delivered the keynote address, "Strengthening Couples and Families" for the United Nations Family Day, 14th May 2012 in Vienna, Austria.

Her book published with Dr R.L Silverberg "The Multicultural Family Chess Board" describes a therapy method she uses with individuals, families, and organisations in many countries.

**Dr Neil will be giving a Featured presentation on Sunday between 17:15 and 18:15 in the Sakura Room (2F), "New Concepts in Family Psychology: Reconnection of Couples, Families and Cultures; Through Affinity, Love and Compassion".**

Sunday, March 30, 2013

Featured Speaker:  
Sakura Room (2F)

17:15-18:15

INTERNATIONAL  
INTERCULTURAL  
INTERDISCIPLINARY

IAFOR

[www.iafor.org](http://www.iafor.org)

For more information about the International Academic Forum and its activities,  
please visit our website at [www.iafor.org](http://www.iafor.org)

Hear the latest news and developments by joining our mailing list, or following us on  
[facebook](#) and [twitter](#).





IAFOR  
The International Academic Forum  
Academic Vision and Mission

The vision of iafor grew out of the perceived need to fill a vacuum in the communication and exchange activities of the academic world. Its mission arose out of examining that space and investigating why it existed. The vacuum existed because of the lack of opportunity for serious and thoughtful exchange between academics, members of the global business community, and practitioners in the fields of human endeavor that linked these groups together. In the field of education, for example, we have academic theorists, educational managers (political decision-makers and organizational directors) and classroom teachers with their support staff in IT, library work, exchange programs, and specialist fields. But how often do they have the opportunity to interact?

Moving beyond one particular field, larger questions arise. What function should universities prioritize in the 21st century? What do businesses see as their contribution to social and global wellbeing? How can people on the ground, trying to implement improvements that will transform human life, best be supported? And perhaps above all, what are the agendas that will drive mechanisms to enable these groups to interact effectively.

One piece of distilled thought that came from early exchanges at an iafor conference was the recognition that some of the rhetoric of concern about the problems of developing nations was perhaps over-focused on the term "poverty" because it can be defined only in a relative way. "Hunger" was put forward as being more immediate and itself a contributory factor to poverty, rather than the other way round. One key to the hunger issue could be the provision of safe drinking water, or water for irrigation in some contexts, while flood management might be necessary elsewhere. These, in and by themselves become valuable only insofar as they help to relieve hunger in specific contexts.

iafor is affording opportunities that do not exist elsewhere. The base is Osaka, Japan's great commercial and manufacturing hub, one symbol of the emerging Pacific economy that in time will eclipse the long dominant Atlantic zone. iafor conferences present those taking part with three unique dimensions of experience. First of all, it encourages interdisciplinary activity to be expanded. Depending on the field, this can face varying degrees of difficulty, ranging from discouragement to downright prohibition. Those overly dependent on fixed academic structures often see lateral thinking as a threat. None of these negatives apply in iafor. Its purpose is to generate new approaches that cross any disciplinary lines. The principle employed is to let the imagination permit intuitive responses to questions. There are no panels of critics. There are simply people who want to listen and reflect. The model of academic work as potholing is replaced by the metaphor of mountaineering. While respecting the need for solid and well-founded academic work, we feel the need to go beyond it from time to time to discover fresh approaches to old questions.

Secondly, it facilitates the heightening of intercultural awareness. Again, iafor encourages innovation through cross-cultural perception. Cultural roots influence people in their attitudes more than most would realize or admit. The need to see and internalize insights gained from other viewpoints is met by a process of steady illumination.

Thirdly, it promotes the broadening of international exchange. We may live in a globalized world, but in reality parochialism still holds sway. The collapse of the U.S.S.R and the break-up of Yugoslavia led to the re-establishment of numerous former countries. While this may be desirable for the peoples concerned, it merely adds to the world's cultural confusion. Exchange leads to explanation and that helps the growth of intercultural awareness.

iafor makes all of these developments possible in one gathering. An iafor conference is not a substitute for specialist conferences. It is intended to be an alternative that functions as a balance or even a corrective to the extreme tendencies that can arise from more narrowly defined research parameters. In short, iafor is promoting and facilitating a new multifaceted approach to one of the core issues of our time, namely globalization and its many forms of growth and expansion. Awareness of how it cuts across the worlds of business, and academia, along with its impact on societies and institutions is one of the driving forces that has given iafor its momentum and is making it a pioneer in this global age.

**Rev. Professor Stuart DB Picken**  
Order of the Sacred Treasure (瑞宝中授章), M.A. (Hons), B.D., Ph.D., F.R.A.S.  
Chairman, Japan Society of Scotland  
Chairman, IAFOR Advisory Board

**Dr. Joseph Haldane**  
B.A. (Hons), Ph.D., F.R.A.S.  
Executive Director, IAFOR

## Organization & Academic Leadership

### Chairman of the International Advisory Board

**The Reverend Professor Stuart D. B. Picken**, Order of the Sacred Treasure, M.A. (Hons), B.D., Ph.D., F.R.A.S.

Professor Picken is the founding Chairman of the International Academic Forum's International Advisory Board. The author of a dozen books and over 130 articles and papers, he is considered one of the foremost scholars on Japan, China, and Globalization in East Asia. As an academic, Professor Picken has devoted more than 30 years to scholarship in Japan, notably as a Professor of Philosophy at the International Christian University in Tokyo, where he specialized in ethics and Japanese thought, and as International Adviser to the High Priest of Tsubaki Grand Shrine (Mie prefecture). He has also served as a consultant to various businesses, including Jun Ashida Ltd., Mitsui Mining & Smelting Corp., Kobe Steel, and Japan Air Lines. In November 2008, the Government of Japan awarded Professor Picken the Order of the Sacred Treasure for his pioneering research, and outstanding contribution to the promotion of friendship and mutual understanding between Japan and the UK. The honour is normally reserved for Japanese citizens and is a mark of the utmost respect in which Professor Picken is held by the Japanese Government. Although now resident in Scotland, Professor Picken maintains his interests in Japan, as Chair of the Japan Society of Scotland, and through the IAFOR IAB. He is also the Chairman of the Academic Board of New College, Birmingham. He lives near Glasgow with his wife and two children.

### Vice-Chairman of the International Advisory Board

**Professor Jerry Platt**, B.S. (Michigan State), MBA (Wayne State), MA, PhD (Ohio State), MS (Stanford)

Jerry Platt is Professor of Global Business at Akita International University, Japan and Professor Emeritus at San Francisco State University. Professor Platt holds a B.S. in Multidisciplinary Social Sciences from Michigan State University, an MBA from Wayne State University, an M.A. in Public Administration, and a Ph.D. in Public Policy and Management from the John Glenn School of Public Affairs at Ohio State University, and an M.S. Statistics Post-Doctoral Degree from Stanford University. His research interests span business, technology and public policy and he is the author of over 85 peer-reviewed papers in these and associated fields. Balancing industry with academic interests, Jerry also served as head of financial analysis for a Bay Area Fortune 500 company, and as CEO of an aviation firm. He has been Principal Investigator on more than twenty U.S. federal research grants. From 1976-2004, Professor Platt was on the faculty of the School of Business at San Francisco State University, and was named Dean in 2001. From 2004 he was Senecal Endowed Dean of the Business School at the University of Redlands, California, before holding concurrent professorships at Redlands and Akita International University, Japan from 2010 until 2012. As Vice-Chair of the IAFOR International Advisory Board, Professor Platt advises the organization on matters pertaining to IAFOR's development and strategy, as it faces the challenge of sustainable growth as both a regional and global organization.

### Executive Director

**Dr Joseph Haldane**, B.A. Hons., Ph.D. (London), F.R.A.S.

Joseph Haldane is the Executive Director of the International Academic Forum. He was Academic Director from IAFOR's inception in 2009 until January 2011, when he assumed his current enlarged role. He is responsible for setting policies, forging institutional partnerships, implementing projects, and overseeing the research and publications of the organization. Joe's academic interests include politics and international affairs, literature, history, and the history of ideas, and he holds a PhD from the University of London in French Studies. He has taught at the University of Paris XII [2002-2004], at the French Press Institute in the University of Paris II - Pantheon-Assas [2003-2004] and was a full-time lecturer at Sciences Po in Paris, where he directed a postgraduate course on British Politics and Media in the School of Journalism [2004-2005]. In 2005 he moved to Japan, and immediately prior to this post was an Associate Professor at Nagoya University of Commerce and Business in both the undergraduate and graduate schools, teaching the Ethics course in the graduate school. He is a fellow of the Royal Asiatic Society.

### Osaka Conference Organizing Committee Chair

**Professor Steve Cornwell**, Ed.D. (Temple)

Steve Cornwell is Professor of English and Interdisciplinary Studies at Osaka Jogakuin College, and also teaches on the MATESOL programme for the New School at NYU. He is Director of Program at Japan Association of Language Teachers (JALT), and a member of the National Board of Directors. An American who has made Osaka his home, Professor Cornwell helps in the logistical and administrative side of every event, as well as in the academic programmes. Steve is also the conference chair for the ACLL/ACTC in Japan and ECLL/ECTC events in the UK.

## People

**IAFOR is shaped by people with one thing in common: the desire to make a difference. The Forum brings together thought leaders from a variety of national, professional and religious backgrounds and is always seeking ideas and input, whether from its network of informal advisers, or through the more structured International Advisory Board and Japan Liaison Committee.**

### The Japan Liaison Committee (JLC)

The Japan Liaison Committee is a consultative committee that provides support in the form of advice and guidance in specific aspects of the planning and projects of the Forum held in Japan. The Chairman of the International Advisory Board is also chair of the JLC. Members of the JLC are ex-officio members of the International Advisory Board.

### The International Advisory Board (IAB)

The Board is composed of distinguished business executives, academics, former and current government officials, and community leaders (for a full list please see below). The Board's role is to provide direction of the business and affairs of the Forum, suggest and approve the areas of scholarly investigation, and safeguard the independence of the Forum's work.

### The Japan Liaison Committee (JLC)

**Prof Stuart D. B. Picken**, Chairman, IAFOR IAB (chair)

**Mr Tom M. Aoyama**, Founder of the PHP Institute, Kyoto, Japan & Director, the Yufuku Gallery, Tokyo, Japan

**Prof Kuniko Miyanaga**, Director, the Human Potential Institute, Tokyo, Japan and Fellow, Reischauer Institute, Harvard University, USA

**Prof Michiko Nakano**, Waseda University, Tokyo, Japan

**Prof Yozo Yokota**, Director of the Center for Human Rights Affairs, Japan & Former UN Special Rapporteur on Myanmar

**Dr Joseph Haldane**, Executive Director, IAFOR

### The International Academic Forum International Advisory Board

Members of the IAFOR IAB are not remunerated for their service. The list below is correct as of October 1, 2012.

**Dr Shamim Ali**, National University of Modern Languages, Pakistan

**Professor David N Aspin**, Professor Emeritus and Former Dean of the Faculty of Education, Monash University, Australia

**Professor Will Baber**, Kyoto University Graduate School of Management, Japan

**Professor Don Brash**, Former Governor of the New Zealand Reserve Bank & Former Leader of the National Party, New Zealand

**Lord Charles Bruce of Elgin and Kincardine**, Lord Lieutenant of Fife, Chairman of the Patrons of the National Galleries of Scotland, UK

**Professor Judith Chapman, A.M.**, Australian Catholic University, Australia, & Visiting Fellow, St Edmund's College, Cambridge University, UK

Member of the Order of Australia

**Professor Chung-Ying Cheng**, Professor of Philosophy, University of Hawai'i at Manoa, USA, Editor-in-Chief, The Journal of Chinese Philosophy

**Professor Tien-Hui Chiang**, National University of Tainan, Chinese Taipei

**Mr Marcus Chidgey**, CEO, Captive Minds Communications Group, London, UK

**Professor Kevin Cleary**, President, The Japan Association of Language Teachers (JALT)

**Professor Steve Cornwell**, Osaka Jogakuin University, Osaka, Japan

**Professor Michael A. Cusumano**, SMR Distinguished Professor, Sloan School of Management, MIT, USA

**Professor Dexter Da Silva**, Professor of Educational Psychology Keisen University, Tokyo, Japan

**Professor Georges Depeyrot**, Centre National de la Recherche Scientifique/Ecole Normale Supérieure, France

**Professor Sue Jackson**, Pro-Vice Master of Teaching and Learning, Birkbeck, University of London, UK

**Mr Matthew Kay**, Digital Marketing Manager, Macmillan Publishers, UK

**Mr Shahzada Khalid**, Deputy Director, SAARC Energy Center, Pakistan

**Professor June Henton**, Dean, College of Human Sciences, Auburn University, USA

**Professor Michael Hudson**, Distinguished Research Professor of Economics at the University of Missouri, Kansas City

**Vice-Consul Kathryn Kiser**, Cultural Affairs Officer, United States State Department, Lahore, Pakistan

**Mrs Eri Kudo**, Head Private Sector Fundraising, UN World Food Programme Japan, Tokyo, Japan

**Professor Sing Kong Lee**, Director of the National Institute of Education, Singapore

**Dr Woon Chia Liu**, Associate Dean, Practicum and School Partnerships, Teacher Education, NIE, Singapore

**Professor Sir Geoffrey Lloyd**, Needham Research Institute Cambridge, & Former Master, Darwin College, Cambridge University, UK

**Dr Robert Logie**, Osaka Gakuin University, Japan

**Dr David McLoughlin**, Meiji University, Japan

**Professor Vasile Meita**, General Manager, URBAN-INERC, Romania

**Professor Keith Miller**, The University of Illinois Springfield, USA & Editor-in-Chief, IEEE Technology and Society

**Professor Marjo Hannele Mitsutomi**, Akita International University, Japan

**Professor Ka Ho Joshua Mok**, Dean of the Faculty of Arts and Sciences, The Hong Kong Institute of Education, Hong Kong SAR

**Dr Jo Mynard**, Associate Professor & Director of the SALC, Kanda University of International Studies, Japan

**Professor Michiko Nakano**, Waseda University, Tokyo, Japan

**Ms Karen Newby**, Director, Par les mots solidaires, Paris, France

**Reverend Professor Stuart D. B. Picken**, Chair, Japan-Scotland Society (**International Advisory Board Chairman**)

**Professor Jerry Platt**, Akita International University, Japan & Professor Emeritus & Former Dean, San Francisco State U., USA.

**Professor Michael Pronko**, Meiji Gakuin University, Tokyo, Japan

**Professor Monty P. Satiadarma**, Clinical Psychologist & Former Rector of Tarumanagara University, Indonesia

**Mr Michael Sakamoto**, UCLA, USA

**Mr Mohamed Salaheen**, Country Director, UN World Food Programme, Japan & Korea

**Mr Lowell Sheppard**, Asia Pacific Director, HOPE International

**Professor Ken Kawan Soetanto**, Director, CLEDSI, Waseda University, Japan

**Dr Jeffrey Sommers**, University of Wisconsin-Madison, USA & The Stockholm School of Economics at Riga, Sweden

**His Excellency Dr Drago Stambuk**, Croatian Ambassador to Brazil

**Professor Mary Stuart**, Vice-Chancellor of the University of Lincoln, UK

**Dr Michael O'Sullivan**, The Chinese University of Hong Kong, Hong Kong

**Professor Gary Swanson**, University of Northern Colorado, USA

**Professor Kensaku Yoshida**, Sophia University, Tokyo, Japan

**Mrs Elly Zaniewicka**, BBC Political Programmes, London, UK

## People

### Mr Thomas Marc Haldane - Chief Operations Officer & Head of Office

A photographer and designer by training and graduate of London College of Communication, Tom Haldane was IAFOR's Director of Design, Media and Communication from 2009 until 2011, when he was named Chief Operations Officer. He is responsible for overseeing the general non-academic administration and operations of IAFOR, but still maintains responsibility for overseeing the organization's design and media, most particularly in the development of the website.

[thaldane@iafor.org](mailto:thaldane@iafor.org) (in English or Japanese)

### Mr Kiyoshi Mana - Manager: Events, Marketing and International Relations

Kiyoshi Mana manages IAFOR's Events, Marketing and International Relations, and manages the administrative team in the Nagoya Office, and also acts as the Osaka conference on-site manager. He works with the COO to ensure the administrative side of the organization runs smoothly, using skills he had developed as a marketing coordinator for a tech company in the Silicon Valley. An American of Japanese descent, Kiyoshi has long been fascinated by the country of his ancestors, studying both Japanese language and culture at San Francisco State University, and also successfully training to be a sushi chef. Coming from a family of educators, he came to Japan in 2009 to continue his studies and to teach, before joining IAFOR in 2011 in a position that utilizes his marketing experience, and his strong commitment to education.

[kmana@iafor.org](mailto:kmana@iafor.org) (in English or Japanese)

### Ms Melissa Choi - Coordinator: Publications, Communications and International Relations

Melissa Choi holds a B.Sc. in Life Sciences from the University of British Columbia, Canada, and an M.A. in International Cooperation from Seoul National University (Korea). Her postgraduate study included a period as an exchange student at Waseda University in Tokyo. Previous to joining IAFOR, Melissa held positions in communications and education in Singapore, Korea, and Japan. A linguist who speaks Japanese, Cantonese and Mandarin as well as her native English, she is responsible for IAFOR's public relations and communications, as well as for overseeing its publications.

[mchoi@iafor.org](mailto:mchoi@iafor.org) (in English, Japanese, Mandarin or Cantonese)

### Ms Mai Hasuno - Coordinator: Events, Marketing and Domestic Relations

Mai works with her Events and Marketing colleagues, with responsibility for developing and implementing IAFOR's marketing strategy within Japan. She also acts as special assistant to the Executive Director and the IAB Chairman in the administration of the Japan International Liaison Committee. Previous to joining IAFOR, Mai worked for the Aioi Nissay Dowa Insurance Corporation.

[mhasuno@iafor.org](mailto:mhasuno@iafor.org) (in English or Japanese)

### Ms Megumi Mukudai - General Secretary and Executive Assistant to the Executive Director

Megumi Mukudai provides support and assistance to the Executive Director, and is involved with general administration of the organization. Megumi trained as a primary school teacher, specializing in music education and English, at Kobe Women's University. She spent one year in Dublin studying English, and a year in Paris studying French at the Sorbonne.

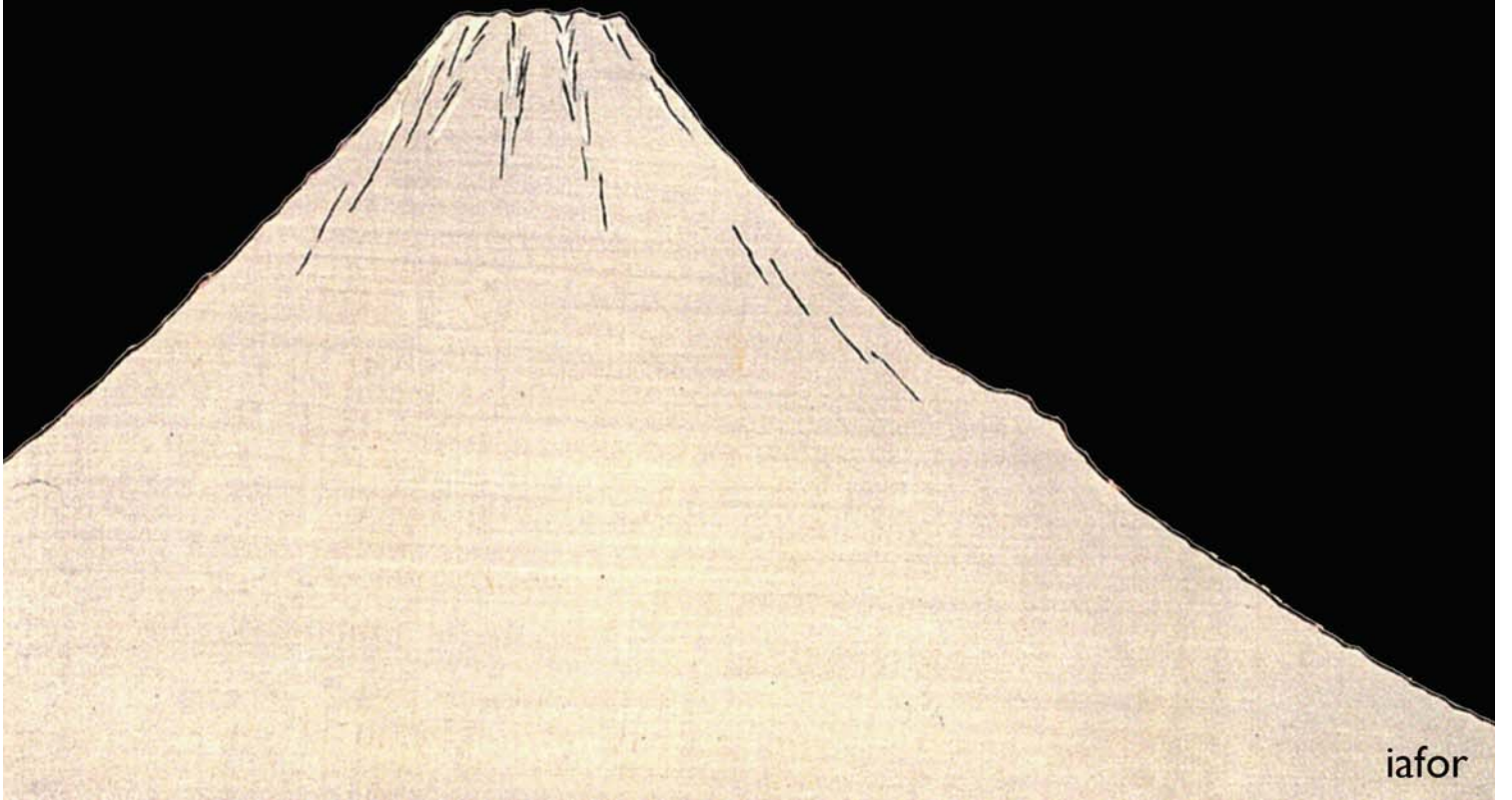
[mmukudai@iafor.org](mailto:mmukudai@iafor.org) (in English or Japanese)

### Ms Miho Tanaka - Assistant Coordinator: Events & Marketing

Ms Miho Tanaka joined IAFOR upon graduating from university with a degree in English Communication from Nagoya University of Commerce and Business. Her study included a year abroad with exchange programmes in the University of Manchester in the UK, and Uppsala University in Sweden. She assists with marketing and general administration.

[mtanaka@iafor.org](mailto:mtanaka@iafor.org) (in English or Japanese)

2011/2012  
iafor  
conference  
overview





**Top left:** Professor Judith Chapman, Professor of Education and Director of the Institute for Lifelong Learning, The Australian Catholic University, and Visiting Fellow, St Edmund's College, University of Cambridge, delivering the Keynote Address at the Asian Conference on Education 2011 (ACE). Professor Chapman is the recipient of the Order of Australia for Services to Education.

**Top Right Inset:** Speakers at the Asian Conference on Language Learning and the Asian Conference on Technology in the Classroom 2012 (ACLL/ACTC). **Clockwise from Top Right:** ACLL Featured Speaker, Anthropologist Professor Kuniko Miyanaga, of the International Christian University Tokyo, Visiting Fellow at the Reischauer Institute, Harvard University, and Director at The Human Potential Institute. ACLL Featured Speaker, Professor Marjo Mitsutomi, Head of English Language Teaching Practices and the Language Development Intercultural Studies Center, Akita International University. ACTC Featured Speaker Dr Joanna Mynard, Associate Professor & Director of the SALC, Kanda University of International Studies. Professor Deryn Verity, Professor of English and Interdisciplinary Studies, Osaka Jogakuin University.

**Bottom Left:** Professor David Aspin, Noted Philosopher of Education & ACE 2011 Featured Speaker. Dr Aspin is Emeritus Professor and Former Dean at Monash University, Australia, and Fellow, St Edmund's College, Cambridge. **Bottom Right:** Professor Barbara Lockee, Professor of Instructional Design and Technology at Virginia Tech, USA, delivering her Keynote Address at ACTC 2012.





**Top left:** World-renowned Economist and author of *Super Imperialism*, Professor **Michael Hudson**, delivers his Keynote speech to delegates at the Asian Business and Management Conference 2012 (ABMC 2012), "Debts That Can't Be paid, Won't: What Happens Next?"

**Top Center:** Professor **Georges Depeyrot**, Monetary Historian, of the ENS/CNRS, Paris, on the development of coinage along the silk road.

**Top Right:** CEO of InTecur, Venture Capitalist and Security Encryption specialist, **William Saito** on reawakening Japan's entrepreneurial spirit.

**Top Center Bottom:** Economic Historian and Guardian Columnist, **Jeffrey Sommers** looked at the economic trends over the past 5,000 years to try and shed some light on the present.

**Top Right Bottom:** **Jerry Platt**, Professor Emeritus and Former Dean, San Francisco State University School of Business, and now of Akita Prefectural University, chairs a panel on the State of the Global Economy.

**Bottom Left:** Pulitzer Prize Nominee, **Richard Roth**. Senior Associate Dean at NorthWestern University's Medhill School of Journalism (Qatar), on the 'Use of Social Media in Journalism in the Arab Spring', his Keynote for the Asian Conference on Media and Mass Communication 2011.

**Bottom Right:** Multi-Emmy Award Winning NBC Producer and UNC Media Professor of Journalism, **Gary Swanson**, Professor Swanson is the MediAsia 2011 & 2012 Conference Chair and also commentates on the Olympic games for CCTV.





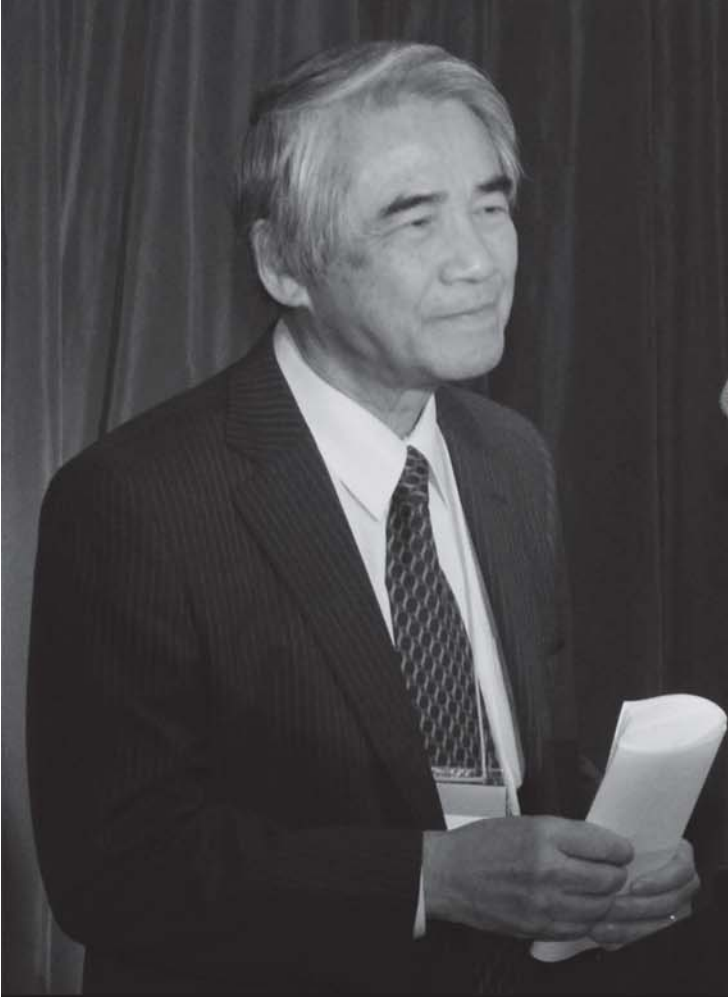
**Top Left (above):** Clinical Psychologist and Former Rector of Tarumanagara University (Indonesia), Dr Monty Satiadarma is Conference Co-Chair of The Asian Conference on Psychology and the Behavioral Sciences 2012-2013. Dr Satiadarma is a Founding and Current Director of the Asian Psychological Association (APsYA), as well as Past President. **Top Left (below):** Professor of Educational Psychology, Keisen University (Japan), and President of the Asian Psychological Association, **Dexter Da Silva** is Conference Co-Chair of ACP 2012-2013 with Dr Satiadarma.

**Top & Bottom Right:** Director of the Japanese Science Museum and veritable polymath, **Akito Arima**, is a nuclear physicist who is best known for his work on the interacting boson model. The recipient of more than a dozen honorary degrees and honours, including the French Legion of Honour, and a knighthood from Queen Elizabeth II (KBE). He has served as the President of the University of Tokyo, Director of the Japanese Science Foundation (RIKEN), and as Minister of both Science and Education. Professor Arima is also a noted haiku poet, and President of the Haiku International Association. IAFOR was happy to welcome him as Keynote Speaker at the Asian Conference on Arts and Humanities, and the Asian Conference on Literature and Librarianship, where he announced the winner of the Second Vladimir Devidé Haiku Award, and also delivered the 2012 Keynote Address: "Symmetry in Art and Science". He is pictured below with IAFOR IAB Chairman, **Professor Stuart Picken**.

**Bottom Left:** Clinical Psychologist and Best-Selling Author, **Dr Beth Hedva** delivers her Keynote Address at ACP 2012.







**Top left: Professor Yozo Yokota.** Internationally renowned jurist, diplomat, and human rights campaigner, delivering the Keynote Address at the Asian Conference on the Social Sciences 2012 (ACSS 2012). Professor Yokota is President of The Center for Human Rights Affairs, Special Adviser to the Japanese Ministry of Justice, Chairman of the International Labor Organization Committee of Experts, Special Adviser to the Rector of the United Nations University, and a Commissioner of the International Commission of Jurists. He started his career as Legal Counsel to the World Bank in Washington before holding professorships in Law at ICU, the University of Tokyo and Chuo University, Tokyo. An internationally respected proponent of human rights, he has extensively advised the United Nations, serving as the UN Special Rapporteur on Human Rights in Myanmar between 1992 and 1996. Professor Yokota currently serves on the IAFOR Japan Liaison Committee.

**Top Inset: Clockwise From Top Right: Professor Parks Coble,** US Historian specializing in Chinese and Japanese History, and Keynote Speaker for the Asian Conference on Cultural Studies and the Asian Conference on Asian Studies. **Mr Shahzada Khalid,** Deputy Director, SAARC Energy Center, Pakistan, and IAFOR IAB member at the ACSEE 2011 Event. **Ms Emiko Miyashita,** Haiku Poet and Translator, and Board Member of the Haiku International Association, who led a Haiku Workshop as part of the LibrAsia 2012 conference.

**Bottom left: Dr Patti Tamara Lenard** of the University of Ottawa, delivering a featured presentation on "Trust in Public Life" at ACERP 2012.

**Bottom right: Dr Joseph Haldane,** Executive Director of IAFOR, welcomes delegates to ACSS/ACSEE 2012.





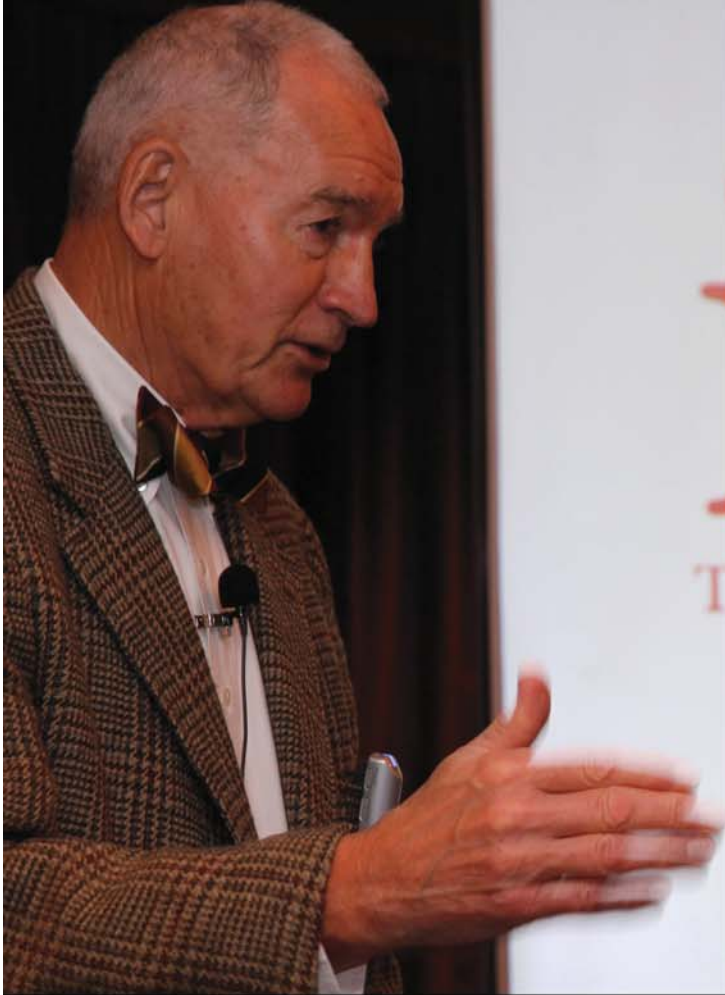
**Top left: Professor Mary Dedinsky** leading a featured panel from the Northwestern University Medill School of Journalism (Qatar Branch), as part of the Asian Conferences on Media and Mass Communication (MediAsia 2012), and Film and Documentary (FilmAsia 2012) joint event. Professor Dedinsky is a former newspaper editor who was the first woman to become a managing editor of a major US newspaper, The Chicago Sun Times. The panel dealt with the role of alternative and social media, particularly when there is an information vacuum created by the mainstream media. The panel included a case study of the Villaggio Mall fire in Qatar, presented with fellow Northwestern professors, **Patricia Roth** and **Richard Roth**, and included a videoconference discussion with Dohanews.co founders, **Omar Chatriwala** and **Shabina S. Khatri**.

**Top Right: Professor Thomas G. Endres**, Director of the School of Communication at the University of Northern Colorado, USA, delivering the MediAsia and FilmAsia 2012 keynote address, "Media and Mass Communication Education: A School's-Eye View".

**Bottom left: Professor Tamara Swenson**, MediAsia and FilmAsia 2012 Local Conference Chair, delivering the conference welcome address.

**Bottom right: Professor Gary Swanson**, MediAsia and FilmAsia 2012 Conference Chair and Lead Judge of the FilmAsia 2012 Open Film and Documentary Competition. He is seen here with **Mr Denis Quinn**, director of fictional winning entry (over 20 minutes), "Too Close to the Sky".





**Top left:** Asian Business and Management Conference 2012 Keynote Speaker, **Dr Bill Totten**, founder and CEO of K.K. Ashisuto, Japan's leading independent distributor of packaged computer software for large organizations. He is a public intellectual in Japan, and has written a dozen books, and speaks publicly throughout Japan. He currently writes a weekly newspaper column addressing economic, social and political issues, and his keynote speech addressed the discussed entry of Japan into the proposed Trans-Pacific Partnership, and to which he is resolutely opposed.

**Top right:** William R and Sue Johnson Endowed Chair of Spatial Economic Analysis and Regional Planning, **Professor Johannes Moenius** of the University of Redlands with his featured address, 'The Geographic Profile of an Economic Crisis'.

**Bottom (left-right):** **Professor Jerry Platt**, Former Dean and Emeritus Professor, San Francisco State University School of Business, Professor of Global Business, Akita International University, and Vice-Chair, IAFOR International Advisory Board; **Dr Bill Totten**, CEO of Ashisuto KK; **Charles Edmond**, Former Stockbroker and Honorary Secretary, The Japan Society of Scotland; **Dr Joseph Haldane**, Executive Director, IAFOR; **Will Baber**, Associate Professor, Kyoto University Graduate School of Management, and ABMC 2012 Conference Co-chair.



# Publications

## The IAFOR Publishing Commitment

All materials published by the International Academic Forum, including journals, proceedings, articles, and monographs can be accessed online through the website at no charge. IAFOR is in the process of constituting a large internet-based and searchable research archive, and is committed to ensuring that this repository is open to any researcher in any country, where there is internet connection, and to providing access to this corpus without charge in online format.

## Journals

The International Academic Forum is in the process of constituting a series of IAFOR Journals, conforming to the highest academic standards. Journal Editors are appointed by the International Academic Forum, and are encouraged to develop independent journals of academic integrity, with articles subject to international processes of peer review.

A small number of papers from the associated IAFOR conference proceedings are selected by the journal editor(s) for reworking and revising subject to normal processes of review. It is expected that between 5 and 10 percent of papers included in any given conference proceedings will be developed for inclusion in the associated conference journal.

IAFOR's journals reflect the interdisciplinary and international nature of our conferences and are organized thematically. Editors may choose to issue one, two or even three volumes of a journal depending on the quality and range of submissions in the respective conference proceedings.

## Keynotes

The IAFOR Keynotes series is a collection of keynote addresses, or associated papers given at our conferences.

Presented as a part of the open research archive, the keynotes series provide an example of the range and quality of speakers at IAFOR events. These keynotes are lightly reworked, and contain references, but are otherwise true to the original address. Many can also be seen in video format on our YouTube page.

iafor

iafor keynotes

Charles Bruce

East Meets West

Elgin's Mission to Japan



iafor

iafor keynotes

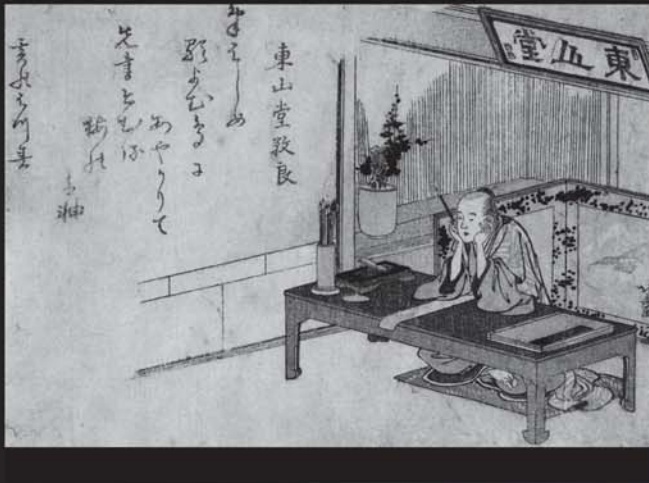
Sue Jackson

Lifelong Learning in a Globalized World:  
Politics, Power and Pedagogic Practices



the iafor

journal of  
literature &  
librarianship



the iafor

journal of  
arts &  
humanities



the iafor

journal of education



the iafor

journal of ethics,  
religion  
& philosophy



# Experience Japan



茶道  
tea ceremony  
saturday 12:15-13:15



書道  
calligraphy  
sunday 12:30-13:00



太鼓  
taiko drums  
friday 11:30-12:00

For more information about our  
“Experience Japan” events, please  
ask for details at the conference  
information desk.

# Friday





9:00-9:30 Welcome Address

9:30-10:30

**ACP/ACERP Keynote Speaker: Dennis McInerney**

*Hamessing the Power of Social Forces for Healthy Self Development and Successful Engagement in Education*

[10:30-11:00 coffee break]

11:00-11:45

**ACERP Featured Speaker: Lowell Sheppard**

11:45-12:15

**Japanese Drum performance**

**太鼓;** Pronounced 'Taiko'

Join us for a powerful performance by students of Osaka's Akutagawa Highschool.  
They have won numerous awards and are headed to perform next in Europe.



Friday Session I: 13:00-14:30

Friday Session I: 13:00-14:30

Room: Sakura A

ACP - Interdisciplinary

Session Chair: Harry Dixon

0122 – 13:00-13:30

*Meta-analysis of Intelligence Scores of 'Street Children' in Developing Countries*  
Graham Pluck, Chuo University, Japan  
Daniel Banda-Cruz, Universidad San Francisco de Quito, Ecuador

0339 – 13:30-14:00

*Clinical Mental Health Help-Seeking Behaviors in Traumatized Diverse Asian Groups*  
Ronn Johnson, University of San Diego, USA  
Jo Jo Y.K. Lee, University of San Diego, USA  
Harry Dixon, University of San Diego, USA

0342 – 14:00-14:30

*Diagnosis and Treatment Planning from Traumatized Diverse Asian Groups: Implications for the DSM-5 and ICD-11*  
Ronn Johnson, University of San Diego, USA  
Harry Dixon, University of San Diego, USA  
Jo Jo Y.K. Lee, University of San Diego, USA

Friday Session I: 13:00-14:30

Room: Sakura B

ACERP - Interdisciplinary

Session Chair: Maria Marczevska-Rytko

0555 – 13:00-13:30

*Meeting Rumi and Assisi: The Paradigm for Peace and Inclusion Today*  
Habibeh Rahim, St. John's University, USA

0363 – 13:30-14:00

*A Cross Cultural Investigation of the Impact of Person-Organization Fit on Ethical Evaluations and Ethical Intentions*  
Aysegul Karaeminogullari, Istanbul University, Turkey  
Erdal Tekarslan, Istanbul University, Turkey

0344 – 14:00-14:30

*Borders and Borderlands - An Attempt to Conceptualize in the Age of Globalization Processes*  
Maria Marczevska-Rytko, Skłodowska University, Poland



F  
r  
i  
d  
a  
y

Friday Session I: 13:00-14:30

Friday Session I: 13:00-14:30

Room: Kusu

ACP – Psychology: Psychology and Education

Session Chair: Alastair Sharp

0100 – 13:00-13:30

*Effect of Computer-Based Educational Program on Learning Selected Basketball Skills in Primary School Students*  
Abdelwahab ElNaggar, King Saud University, Saudi Arabia  
Saleh ALTwajiri, King Saud University, Saudi Arabia

0246 – 13:30-14:00

*Stress Resistance, Adaptability, and Emotional Stability of Medical Students Obtaining Categories 4 and 5 on The Psychometric Test and Related Factors*

Adhityawarman Menaldi, University of Indonesia, Indonesia  
Sri Linuwih Menaldi, University of Indonesia, Indonesia  
Aria Kekalih, University of Indonesia, Indonesia  
Iwan Dwiprahasto, Universitas Gajahmada, Indonesia  
Ova Emilia, Universitas Gajahmada, Indonesia  
Yayi Prabandari, Universitas Gajahmada, Indonesia

0031 – 14:00-14:30

*Student Mental Health Problems and School Connectedness: An Unintended Consequence of High Stakes Testing?*  
Alastair Sharp, Lingnan University, Hong Kong

Friday Session I: 13:00-14:30

Room: Kashi

ACP – Psychology: General Psychology

Session Chair: Sandy Kartasasmita

0316 – 13:00-13:30

*Trustworthiness in Relationship: Recent Study on Social Behavior*  
Denrich Suryadi, Tarumanagara University, Indonesia

0286 – 13:30-14:00

*Building Strong Family through Family Organizational Patterns*  
Widya Risnawaty, Tarumanagara University, Indonesia  
Francisca Iriani Roesmala Dewi, Tarumanagara University, Indonesia

0315 – 14:00-14:30

*Description of Happiness on Online Gamers*  
Sandy Kartasasmita, Tarumanagara, Indonesia

Friday Session I: 13:00-14:30

Room: Hana

ACP/ACERP – Interdisciplinary

Session Chair: Robert Cummins

0107 – 13:00-13:30

*Relationships of Birth Order, Parent-Child Relationship, Personality, and Academic Performance*  
Cai Lian Tam, Monash University Sunway, Malaysia  
TshuiSun Ha, Sunway University, Malaysia

0511 – 13:30-14:00

*The Challenge of Assessment for the Community of Inquiry: Negotiating Individuals and Community*  
Kevin Ng Pek Kee, Raffles Girls' School, Singapore

0217 – 14:00-14:30

*A Demonstration of Set-Points for Subjective Wellbeing*  
Robert Cummins, Deakin University, Australia



F  
r  
i  
d  
a  
y

Friday Session I: 13:00-14:30

Friday Session I: 13:00-14:30

Room: Sugi

ACP – Interdisciplinary

Session Chair: May Oo Lwin

0509 – 13:00-13:30

*Experiences of Diagnosis and Lifestyle Management in Korean Adults with Metabolic Syndrome*  
Seunghyun Yoo, Seoul National University, Korea  
Soryoung Sim, Seoul National University, Korea  
Hyekyeong Kim, Health Promotion Research Institute, Korea  
Yewon Jeon, Seoul National University, Korea

0146 – 13:30-14:00

*Consumer Market for Functional Foods in Thailand*  
Phanchita Methakomkulnan, The Graduate Institute of Technology & Innovation Management, Taiwan  
Ying-Jiun Hsieh, The Graduate Institute of Technology & Innovation Management, Taiwan  
Lan-Ying Huang, National Changhua University of Education, Taiwan

0542 – 14:00-14:30

*Effectiveness of Health Messages in Countering Unhealthy Food Advertising: The Role of Regulatory Fit*  
Su Lin Yeo, Nanyang Technological University, Singapore  
May Oo Lwin, Nanyang Technological University, Singapore  
Ying-yi Hong, Nanyang Technological University, Singapore



F  
r  
i  
d  
a  
y



Friday Poster Session: 13:00-14:30

Friday Poster Session: 13:00-14:30

Room: Fuji

ACPI/ACERP - Interdisciplinary

0290

*Difficulties in Interpersonal Relationships and the Attribution of Taiwanese International Students*

Hsiao Ching Chen, Okayama University, Japan

Koji Mikushi, Okayama University, Japan

Tomoko Tanaka, Okayama University, Japan

0294

*A Content-analysis of Korean Teachers' Perception and Belief Regarding Students with ADHD: A Comparison with U.S. Studies*

Yumi Lee, University of Leipzig, Germany

Evelin Witruk, University of Leipzig, Germany

0299

*How Japanese Students Establish, Maintain and Develop Cross-Cultural Friendships with International Students: Exploratory Study*

Mira Simic-Yamashita, Okayama University, Japan

Michie Noguchi, Okayama University, Japan

0223

*Regular Exercise Pattern and Related factors among Women during Pregnancy in Taiwan*

Ching-Fang Lee, Oriental Institute of Technology College, Taiwan

Chen-Ta Tung, West Garden Hospital, Taiwan

Shu-shan Lin, Oriental Institute of Technology College, Taiwan

Hsien-Ming Lin, Oriental Institute of Technology College, Taiwan

0446

*Effects of Adlerian Group Counseling for Chinese Grade-School Teachers with Chronic Fatigue Syndrome*

Ting-Chia Lien, National University of Tainan, Taiwan

Ying-Fen Wang, National Taichung University of Education, Taiwan

Chih-Hsien Chen, Tajen University, Taiwan

Shi-Sen Shyu, National Kaohsiung Normal University, Taiwan

Jiun-De Lin, National Taichung University of Science and Technology, Taiwan

Szu-Fan Chen, National Kaohsiung Normal University, Taiwan

0167

*A Developing Second-Order Measurement Model of Thai Adolescent's Desirable Characteristics*

Panidapom Jongrachon, Chulalongkorn University, Thailand

Puntip Sirivunnabood, Chulalongkorn University, Thailand

Penpilai Rithakananone, Chulalongkorn University, Thailand

0474

*Modeling Choice Behavior of Delivery Provider of Online Auctioneer*

Yi-Wen Kuo, Shu-Te University, Taiwan

Yu-Kai Huang, Nanhua University, Taiwan

0359

*Explaining Context Effects through the Perspective of Preference Uncertainty*

Jih-Jeng Huang, Soochow University, Taiwan

0215

*Moderation Effect of Approach-Avoidance Commitment on Compromise with Romantic Partners*

Kentaro Komura, University of Tsukuba, Japan

0219

*The Challenge of the Aging Society: Psychological Treatment and Adjustment Problems of the Elderly Inmates in Taiwan*

Shen-feng Tai, National Chung Cheng University, Taiwan

Yi-chien Ku, National Chung Cheng University, Taiwan



F  
r  
i  
d  
a  
y

Friday Session 2: 14:45-16:15

Friday Session 2: 14:45-16:15

Room: Sakura A

ACP – Psychology: Mental Health

Session Chair: Constance Scharff

0135 – 14:45-15:15

*Musical Preferences, Urban Tribes and Substance Abuse*

Margarida Gaspar de Matos, Technical University of Lisbon, Portugal

Mafalda Ferreira, Technical University of Lisbon, Portugal

Celeste Simoes, Technical University of Lisbon, Portugal

José Alves Diniz, Technical University of Lisbon, Portugal

0009 – 15:15-15:45

*Therapeutic Alliance and the Prevention of Relapse in Collectivist Malay Family in Malaysia*

Zall Kepli Md Rejab, University Malaysia Sabah (UMS), Malaysia

Mahmood Nazar Mohamed, Cyberjaya University College of Medical Sciences (CUCMS), Malaysia

0280 – 15:45-16:15

*From Alienation to Hope: New Approaches to Addiction Treatment Produce Successful Recovery*

Constance Scharff, Cliffside Malibu, USA

Friday Session 2: 14:45-16:15

Room: Sakura B

ACERP – Interdisciplinary

Session Chair: Gul Inanc

0281 – 14:45-15:15

*An Analysis of Film Voice-Over and Sound Interpretation Techniques from a Cross-Cultural Perspective*

Chun-Wen Fang, Tatung University, Taiwan

Li-Chieh Chen, Tatung University, Taiwan

Chin Shih Chen, Tatung University, Taiwan

0245 – 15:15-15:45

*Tragedy Aesthetics of Ki-duk Kim Film*

Yu Di Huang, Tatung University, Taiwan

Chien-Chih Lin, Chung Chou University of Science and Technology, Taiwan

Li-Chieh Chen, Tatung University, Taiwan

Mei-Chu Cheng, Tatung University, Taiwan

M-H. Mia Chen, Tatung University, Taiwan

0094 – 15:45-16:15

*Global Ethics for Heritage and Intercultural Education for Peace: Mission of "Forty Martyrs" in the 21st cc*

Gul Inanc, National University of Singapore, Singapore



F  
r  
i  
d  
a  
y

Friday Session 2: 14:45-16:15

Friday Session 2: 14:45-16:15

Room: Kusu

ACP – Psychology: Qualitative/Quantitative Research in any other area of Psychology

Session Chair: Wan-yim Ip

0022 – 14:45-15:15

*Perspectives of Preschool Teachers on Prevention and Mandatory Reporting of Child Sexual Abuse*  
Mei-hua Chien, National Chung Cheng University, Taiwan

0236 – 15:15-15:45

*Effect of Transpersonal Psychotherapy in Reducing Symptom of Craving and the Level Dependency in People with Substance Use Disorder*

Diah Fridari, Udayana University, Indonesia

Indra Surya, Udayana University, Indonesia

Eko Budi, Udayana University, Indonesia

Aninditha Veera, Udayana University, Indonesia

Karina Putri, Udayana University, Indonesia

Puspasari Dewi, Udayana University, Indonesia

Ayana Wiria, Udayana University, Indonesia

0115 – 15:45-16:15

*Why Bother Women's Perception of Control Over Labour*

Wan-yim Ip, The Chinese University of Hong Kong, Hong Kong

Carmen W.H. Chan, The Chinese University of Hong Kong, Hong Kong

Ka Ming Chow, The Chinese University of Hong Kong, Hong Kong



F  
r  
i  
d  
a  
y

Friday Session 2: 14:45-16:15

Room: Kashi

ACP – Interdisciplinary

Session Chair: Orly Lobel

0058 – 14:45-15:15

*Investigating Different Weathers on Customers' Mood and Their Impulsive Buying Behavior*

Hui-Hsin Huang, Aletheia University, Taiwan

Yu-Ju Shih, Aletheia University, Taiwan

0263 – 15:15-15:45

*Dealing with Emotional Crisis: A Phenomenological Exploration of Thai Helpers' Perception and Experiences*

Nattasuda Taephant, Chulalongkorn University, Thailand

Arunya Tuicomepee, Chulalongkorn University, Thailand

Supapan Kotrajaras, Chulalongkorn University, Thailand

0106 – 15:45-16:15

*Risk Management for the Future: Age, Risk, Cognitive Depletion, and Choice Architecture*

Orly Lobel, University of San Diego, USA

On Amir, University of San Diego, USA

Friday Session 2: 14:45-16:15

Friday Session 2: 14:45-16:15

Room: Hana

ACP – Interdisciplinary

Session Chair: Yuhsuan Chang

0504 – 14:45-15:15

*Attitudes towards Mental Illness among Undergraduate Nursing Students*

Alisa Ka-po Wong, The Open University of Hong Kong, Hong Kong

Ka-fai Wong, The Open University of Hong Kong, Hong Kong

Tin-chi Chan, The Open University of Hong Kong, Hong Kong

Chun-ho Chui, The Open University of Hong Kong, Hong Kong

Shu-ming Ho, The Open University of Hong Kong, Hong Kong

Kon-yeek Lam, The Open University of Hong Kong, Hong Kong

Ngai-lam Leung, The Open University of Hong Kong, Hong Kong

Pui-kwan Tang, The Open University of Hong Kong, Hong Kong

Chun-yiu Tse, The Open University of Hong Kong, Hong Kong

Chun-yu Wong, The Open University of Hong Kong, Hong Kong

Kai-yin Wong, The Open University of Hong Kong, Hong Kong

Kei-chun Wong, The Open University of Hong Kong, Hong Kong

0211 – 15:15-15:45

*Examining Critical Success Factors for Medical Device Industry in Taiwan*

Hui-Ting Lin, National Chung Hsing University, Taiwan

Ying-Jiun Hsieh, National Chung Hsing University, Taiwan

0266 – 15:45-16:15

*Psychometric Validity of the Almost Perfect Scale (APS) Scale: In Relation to Depression, Anxiety, and Stress among Nursing Staff*

Yuhsuan Chang, Yuan Ze University, Taiwan

Yu-Ling Lan, National Dong Hwa University, Taiwan

Friday Session 2: 14:45-16:15

Room: Sugi

ACP – Interdisciplinary

Session Chair: Dina Kirnarskaya

0222 – 14:45-15:15

*Musicians' Enigma in Kazuo Ishiguro's Nocturnes*

Yu-min Huang, National Changhua University of Education, Taiwan

0526 – 15:15-15:45

*Language and Gender Differences on Communication Preferences and Perceived Ease of Use of Social Media in Asia*

Tan Xiong Gentatsu Lim, Nanyang Technological University, Singapore

May Oo Lwin, Nanyang Technological University, Singapore

Santosh Vijaykumar, Nanyang Technological University, Singapore

0129 – 15:45-16:15

*How to Predict Professional Success in Music and Beyond? Constructing Universal Talent's Structure for the Best Vocational Choices*

Dina Kirnarskaya, Russian Gnesins' Academy of Music, Russia

Featured Speaker Presentation

16:30-17:30

Sakura Room 2F

Jiro Takai

*When Japanese Are Not Being Japanese: Being Betrayed by Japanese Samples in Cross-cultural Comparisons*

19:00-22:00

A Night Out in Osaka: Conference Dinner (Ticketed and Optional)

Come and join your fellow delegates on an evening out in a Japanese Izakaya, with a good mix of food and drink to suit all tastes.

This is ticketed at JPY 5,000 and there are a limited number of spaces.

Please meet in the lobby of the hotel at 18:30.







# Saturday



Saturday Session I: 9:00-10:30

Saturday Panel Session I: 9:00-10:30

Room: Sakura A

ACP – Psychology: Qualitative/Quantitative Research in any other area of Psychology

Session Chair: Duangduen Bhanthumnavin

0077

*Psycho-Situational Antecedents of Peer-Alienation Reduction in School Adolescents*  
Duangduen Bhanthumnavin, National Research Council of Thailand, Thailand

0078

*Antecedents of Psychological Connectedness to Community's Nuclear Empowerment in Thai Adolescents*  
Duchduen Bhanthumnavin, Shinawatra University, Thailand  
Vutthi Bhanthumnavin, Shinawatra University, Thailand

0079

*Path Analytic Connection between Adolescents' Academic Need Achievement and Academic Self-Regulated Behavior*  
Ngamta Vanindananda, National Research Council of Thailand, Thailand

0080

*What Encourage Altruism in Teenagers: A Study of Psychological States and Helping Behaviors of High School Students*  
Bung-on Sorod, National Institute of Development Administration, Thailand

0081

*Law and Rule Adhering Behavior of Thai Adolescents: Psycho-Behavioral Antecedents for Good Citizenships Promotion*  
Kosol Meekhun, National Research Council of Thailand, Thailand

Saturday Session I: 9:00-10:30

Room: Sakura B

ACERP – Interdisciplinary

Session Chair: Chao-Ching Fu

0261 – 9:00-9:30

*Healthcare Ethics Committees in Serving the Patients and Doctors Empowerment*  
Yossi Weiss, Ariel University, Israel

0203 – 9:30-10:00

*Seniors Use of Medical Electric Scooters with The Intention Satisfaction Study in Taiwan*  
Win-Chin Lee, Tatung University, Taiwan  
Cheng-Hung Huang, Tatung University, Taiwan  
Chih-Fu Wu, Tatung University, Taiwan  
Yi-Jung Lee, National Chiao Tung University, Taiwan

0553 – 10:00-10:30

*Changing Thoughts and Changing Beliefs - New Trends in Religious Architecture in Twenty-First Century Taiwan*  
Chao-Ching Fu, National Cheng Kung University, Taiwan



S  
a  
t  
u  
r  
d  
a  
y

Saturday Session I: 9:00-10:30

Saturday Session I: 9:00-10:30

Room: Kusu

ACP – Interdisciplinary

Session Chair: Ronelle Sato

0169 – 9:00-9:30

*Ambiguous Bodily Experiences, Alienation and Connectedness among Dying Persons in a Swedish Hospice*  
Cecilia Hakanson, Ersta Skondal University College, Sweden

0189 – 9:30-10:00

*Grief Journey: Counselling Experience of Adult Grieving the Death of a Loved One*  
Kui Chin Tan, University of Malaya, Malaysia

0130 – 10:00-10:30

*Working with Death and Dying: A Proposal for Supplemental Training*  
Ronelle Sato, American School of Professional Psychology at Argosy University Hawaii, USA

Saturday Session I: 9:00-10:30

Room: Kashi

ACP – Psychology: Mental Health

Session Chair: Tri Kurniati Ambarini

0174 – 9:00-9:30

*Developing a Longitudinal Model for Quality of Life Measurement in Women with Cervical Cancer – A Structural Equation Modeling Framework*  
Chi-Chang Chang, Chungshan Medical University, Taiwan

0350 – 9:30-10:00

*Stressor and Quality of life in Schizophrenia*  
Tri Kurniati Ambarini, Universitas Airlangga, Indonesia

Saturday Session I: 9:00-10:30

Room: Hana

ACP – Interdisciplinary

Session Chair: Yu-Ling Lan

0148 – 9:00-9:30

*Holistic Theory of Behaviour*  
Surendra Nath Dubey, Avadh University, India

0448 – 9:30-10:00

*The Diagnostic Technique of Activity, Action and Deed Reflection*  
Maria Kuznetsova, National Research University of Higher School of Economics, Russia

0239 – 10:00-10:30

*An Exploratory Study of Core Competencies in Psychological Assessment - A Taiwan Perspective*  
Yu-Ling Lan, National Dong Hwa University, Taiwan  
Yuhsuan Chang, Yuan Ze University, Taiwan



S  
a  
t  
u  
r  
d  
a  
y

Saturday Session I: 9:00-10:30

Saturday Session I: 9:00-10:00

Room: Sugi

ACP – Interdisciplinary

Session Chair: Stephen Kane

0123 – 9:00-9:30

*Development and Preliminary Validation of the Anger Eliciting Situation Scale and Anger Bodily Sensation Scale in a Japanese Sample*

Misa Hirano, University of Tsukuba, Japan

Shintaro Yukawa, University of Tsukuba, Japan

0185 – 9:30-10:00

*"If the wizard is a wizard who will serve": Using a Cinematic Theme to Explore Anxiety, Loss and Unfulfilled Expectations of Parental Love and Protection in a Sample of At-Risk Adolescents on the Island of Guam*

Stephen Kane, University of Guam, Guam



S  
a  
t  
u  
r  
d  
a  
y



Saturday Session 2: 10:45-12:15

Saturday Panel Session 2: 10:45-12:15

Room: Kusu

ACP - Psychology: Mental Health

Session Chair: J. Mark Davis

0232

*Current Research on Mental Health Issues and Wellbeing in Macao*

J. Mark Davis, University of Macau, Macao

Gertina van Schalkwyk, University of Macau, Macao

Charles Zaroff, University of Macau, Macao

Lisbeth Ku, University of Macau, Macao

Saturday Session 2: 10:45-12:15

Room: Kashi

ACERP – Interdisciplinary

Session Chair: Simon Skempton

0429 – 10:45-11:15

*We Are Place; Place Is Us*

Rhoda Santillan-Tayag, St. Scholastica's College, Philippines

0407 – 11:15-11:45

*On Divine Omniscience and Human Freewill: An Analysis of Nelson Pike's Argument of Incompatibilism*

Rosallia Domingo, De La Salle University, Philippines

0327 – 11:45-12:15

*Communication Technology and the World Spirit*

Simon Skempton, National Research University - HSE, Russia

Saturday Session 2: 10:45-11:45

Room: Hana

ACP – Psychology: Mental Health

Session Chair: Mohammad Khodayarifard

0098 – 10:45-11:15

*Factor Associated with Self-Perceived Depression among Occupationally Injured Workers*

Mohammad Idris Zamhuri, University Technology MARA, Malaysia

Loh Siew Yim, University of Malaya, Malaysia

Azlan Darus, University of Malaya, Malaysia

Tin Tin Su, University of Malaya, Malaysia

Mohammed Azman, Social Security Organisation, Malaysia

0012 – 11:15-11:45

*Cognitive-Behavioral Therapy of Bipolar Depressive Disorder (Manic-Depressive): A Case Study*

Mohammad Khodayarifard, University of Tehran, Iran



S  
a  
t  
u  
r  
d  
a  
y

Saturday Session 2: 10:45-12:15

Saturday Extended Session 2: 10:45-12:45

Room: Sugi

ACP – Psychology: Psychology and Education

Session Chair: Malka Margalit

0287 – 10:45-11:15

*The Role of Language on Connectedness and Alienation for School Children in Their Social Relationship*  
Samsuniwijati Mar'at, Tarumanagara University, Indonesia  
Rahmah Hastuti, Tarumanagara University, Indonesia

0508 – 11:15-11:45

*Development of Resilience Quotient (RQ) Support Activities Set for Disabled Students*  
Ammaret Netasit, Lampung Rajabhat University, Thailand

0564 – 11:45-12:15

*A Proposed Conceptual Model for Fostering Belonging in Secondary Schools*  
Kelly Allen, The University of Melbourne, Australia  
Terry Bowles, The University of Melbourne, Australia

0447 – 12:15-12:45

*Hope, Sense of Coherence and Loneliness among Children and Adolescents: The Salutogenic Perspective*  
Malka Margalit, Peres Academic Center, Israel

Saturday Session 2: 10:45-12:15

Room: Fuji

ACP – Interdisciplinary

Session Chair: Wen-Kuei Lai

0394 – 10:45-11:15

*The Key Success Factors to Determine Men Use Facial Care Products*  
Ya-Kang Chiu, Shih Hsin University, Taiwan  
Y-Yun Liu, Shih Hsin University, Taiwan

0400 – 11:15-11:45

*A Study on the Learners' Mental Models toward M-Learning*  
Jy-Kuang Fang, Shih-Hsin University, Taiwan  
Yi-Yin Lin, Shih-Hsin University, Taiwan

0251 – 11:45-12:15

*Explore the Physical and Mental Health of Air-Circulated Temperature Regulation Clothes*  
Wen-Kuei Lai, Tatung University, Taiwan  
Chih-Fu Wu, Tatung University, Taiwan  
Bor-shung Huang, Taiwan Textile Research Institute, Taiwan  
Guo-Xiang Wang, Taiwan Textile Research Institute, Taiwan  
Xiu-Ling Hu, Taiwan Textile Research Institute, Taiwan

Special Event: Tea Ceremony

12:15-13:15

Sakura 2F

茶道; Pronounced 'Sa do'

We welcome you to the traditional tea ceremony that Japan has practiced since the 9th century.  
Come and learn the tradition from Osaka Jogakuin University's experts.



S  
a  
t  
u  
r  
d  
a  
y

Saturday Session 3: 13:15-14:45

Saturday Session 3: 13:15-14:45

Room: Kusu

ACP – Interdisciplinary

Session Chair: May O. Lwin

0195 – 13:15-13:45

*Understanding and Thinking Promotion through Visualization in Eye Movement*  
Jinglu Cai, The University of Tokyo, Japan  
Yukio Ohsawa, The University of Tokyo, Japan

0213 – 13:45-14:15

*Creating an Audio-Haptic Storybook for Visually Impaired Children: The Role of Audio Feedback in Inducing Pleasure*  
Sara Partow, Islamic Azad University, Iran

0515 – 14:15-14:45

*Crossmodal Effects of Olfactory and Visual Cues in Print Advertisements on Attention and Memory*  
May O. Lwin, Nanyang Technological University, Singapore

Saturday Session 3: 13:15-14:45

Room: Hana

ACP – Interdisciplinary

Session Chair: Yuta Chishima

0324 – 13:15-13:45

*The Effect of Communication Behaviors during the Dyadic Interaction on Interpersonal Attraction*  
Shin Nakamine, University of Tsukuba, Japan  
Ikko Daibo, Tokyo Future University, Japan

0264 – 13:45-14:15

*Changes Caused by Romantic Love among Japanese University Students*  
Machiko Takahashi, University of Tsukuba, Japan

0305 – 14:15-14:45

*Relations between Intention to Self-Change and Cognitions of Benefit and Cost to Self-Change in University Students*  
Yuta Chishima, University of Tsukuba, Japan

Saturday Session 3: 13:15-14:45

Room: Sugi

ACP – Psychology: Mental Health

Session Chair: Roswiyani Roswiyani

0268 – 13:15-13:45

*Living Arrangements and Adjustment of Elderly Persons*  
Nisha Mundada, SSMM Arts Commerce & Science College, India  
Revati Hatkanagalekar, KWC Arts Commerce & Science College, India

0464 – 13:45-14:15

*Connectedness between Individual, Community and Environmental Factors in the Process of Recovery People Affected Merapi Eruption in 2010*  
Mellia Christia, Universitas Indonesia, Indonesia  
Arnfinn Helleve, University of Oslo, Norway

0345 – 14:15-14:45

*Negligence in Modern Families Lives*  
Roswiyani Roswiyani, Tarumanagara University, Indonesia



S  
a  
t  
u  
r  
d  
a  
y

Saturday Session 3: 13:15-14:45

Saturday Session 3: 13:15-14:45

Room: Fuji

ACPI/ACERP – Interdisciplinary

Session Chair: Aswati Hamzah

0179 – 13:15-13:45

*Wisdoms beyond the Gradual Revelations of the Noble Qur'an (Some Contemporary Educational, Social, Moral and Spiritual Wisdoms)*  
Hajredin Hoxha, Qatar University, Qatar

0132 – 13:45-14:15

*Effects of Connected with the Creator on the Organizational Restructuring of the "Islamic" Micro Financial Cooperatives "X" in Indonesia*  
Arief Fahmie, Islamic University of Indonesia, Indonesia  
Hariz Enggar Wijaya, Islamic University of Indonesia, Indonesia

0288 – 14:15-14:45

*The Formation of "Akhlaq" Reasoning Schemes: Complementary Viewpoints from Neurosciences and Cognitive Sciences*  
Aswati Hamzah, Universiti Sains Malaysia, Malaysia  
Hairul Ismail, Universiti Sains Malaysia, Malaysia



S  
a  
t  
u  
r  
d  
a  
y

Saturday Panel Session: 13:15-14:45

Room: Kashi

ACERP – Ethics: Ethics, Law, and Justice

Session Chair: Elke Schwarz

0230

*Encounters in Ethics: Hostility and Empathy in an Inter-connected World*  
Elke Schwarz, London School of Economics, UK  
Caroline Holmqvist, Swedish National Defence College, Sweden  
Diego De-Merich, London School of Economics, UK  
Maria Fotou, University of Westminster, UK





Saturday Poster Session: 13:15-14:45

Saturday Poster Session: 13:15-14:45

Room: Tsuki

ACP - Interdisciplinary

0197

*The Effect of Sharing a Feeling of Schadenfreude on Adolescents' Self-Esteem*  
Hitomi Watanabe, Doshisha University, Japan

0471

*Change of Emotional Valence in Control of Memory Suppression*  
Yoshiko Honma, Nagoya University, Japan  
Jun Kawaguchi, Nagoya University, Japan

0194

*Translation of Mindfulness-based Exercises to a Behavioral Contingencies Language: A Standardization Exercise for Mindfulness Teachers and Clinicians*  
Eric Lopez-Maya, Maria del Rocio Hernandez-Pozo

0209

*The Relationships among Implicit and Explicit Self-esteem and Undervaluing Others*  
Reiko Ichikawa, University of Tsukuba, Japan  
Tatsuya Murakami, University of Tsukuba, Japan  
Satoshi Mochizuki, University of Tsukuba, Japan

0328

*Validation of Psychological Capital Questionnaire in Thai Employees*  
Siriporn Sapyaprapa, Chulalongkorn University, Thailand  
Arunya Tuicomepee, Chulalongkorn University, Thailand  
Rewadee Watakakosol, Chulalongkorn University, Thailand

0476

*Work Satisfaction and Happiness Index of Personnel Working in Boromarajonani College of Nursing, Yala, Thailand*  
Preeyanuch Chaikongkiat, Boromarajonani College of Nursing, Thailand  
Bunkanus Chantarasiribhub, Boromarajonani College of Nursing, Thailand

0444

*Psychological Needs of Occupational Accident Labors in Taiwan*  
Ting-Chia Lien, National University of Tainan, Taiwan  
Szu-Fan Chen, National Kaohsiung Normal University, Taiwan  
Shi-Sen Shyu, National Kaohsiung Normal University, Taiwan  
Chih-Hsien Chen, Tainan University, Taiwan

0532

*Using Rule-Based Modeling to Motivate Students to Participate in Class Discussion*  
Sunwoo Kang, The Catholic University of Korea, Korea

0482

*Defensive Self-esteem, Psychological Reactance, and Attitude Certainty in Persuasion*  
Watcharaporn Boonyasiriwat, Chulalongkorn University, Thailand  
Yokfah Isaranon, Chulalongkorn University, Thailand



S  
a  
t  
u  
r  
d  
a  
y

Saturday Session 4: 15:00-16:30

Saturday Session 4: 15:00-16:00

Room: Sakura A

ACERP – Interdisciplinary

Session Chair: Helene Cristini

0248 – 15:00-15:30

*An Explanation of Monk's Marriage in Japan —The Ideas of Shinran and a Comparison with M.Luther—*  
Ayako Osawa, Tokyo Institute of Technology, Japan

0514 – 15:30-16:00

*How Muslim and Secular Fundamentalism which Suffer from the Same Illness, will be Cured by the Same Treatment*  
Helene Cristini, International University of Monaco, Monaco



Saturday Session 4: 15:00-16:30

Room: Sakura B

ACERP – Interdisciplinary

Session Chair: Megumi Ohsumi

0180 – 15:00-15:30

*The Thinking of Animation: Conflict of 3D and 2D*  
Shih-Ting Tsai, Tatung University, Taiwan  
Ming-Hsiu Mia Chen, Tatung University, Taiwan

0377 – 15:30-16:00

*Preliminary Study of 3D Base Navigation Websites Development - Use 3D Virtual Temple Navigate Websites For Example*  
Hsuan-Jan Kao, Tatung University, Taiwan  
Li-Chieh Chen, Tatung University, Taiwan

0147 – 16:00-16:30

*Religion and Alienation: The Case of Catholic Poet Alexander Pope*  
Megumi Ohsumi, University of Neuchatel, Switzerland

Saturday Session 4: 15:00-16:30

Room: Kusu

ACP – Interdisciplinary

Session Chair: Chie Hotta

0334 – 15:00-15:30

*Study on the Child with ADHD and Dysgraphia in Mandarin: A Case-Study*  
Rei-Ying Huang, Tatung University, Taiwan  
Wei-Shin Huang, Tatung University, Taiwan

0158 – 15:30-16:00

*Developing Teachers' Mental Health Literacy by Connecting Regular Teachers to Students with Special Needs in Inclusive Schools*  
Muryantinah Mulyo Handayani, Airlangga University, Indonesia

0310 – 16:00-16:30

*Effects of Remembering with Touching the Area of Self-Body on the Performance of Human Figure Drawing in Toddlers: A Longitudinal Study*

Chie Hotta, Kansai University of Welfare Sciences, Japan  
Nobuko Hanasaki, Kanaoka Nursery School, Japan  
Hidetsugu Tajika, Kobe Shinwa Womens' University, Japan  
Ikuko Hotta, Aichi Women's Consultation Center, Japan

S  
a  
t  
u  
r  
d  
a  
y

Saturday Session 4: 15:00-16:30

Saturday Session 4: 15:00-16:30

Room: Kashi

ACP – Psychology: Qualitative/Quantitative Research in any other area of Psychology

Session Chair: Mirona Gheorghiu

0500 – 15:00-15:30

*The Relationship between Analytic and Holistic Styles of Thinking and Forgiveness*

Loan Bui, Asian University for Women, Bangladesh

Sharon Flicker, Asian University for Women, Bangladesh

0272 – 15:30-16:00

*Self-Acceptance of Sexual Orientation in Gay Men: A Consensual Qualitative Research*

Phakphoom Decha-ananwong, Chulalongkorn University, Thailand

Arunya Tuicomepee, Chulalongkorn University, Thailand

Suppapan Kotrajaras, Chulalongkorn University, Thailand

0278 – 16:00-16:30

*The Dual Function of Generalised Social Trust as a Social Worldview*

Mirona Gheorghiu, Queen's University Belfast, UK

Thia Dickey, Queen's University Belfast, UK

Saturday Session 4: 15:00-16:30

Room: Hana

ACP – Interdisciplinary

Session Chair: Yapina Widyawati

0368 – 15:00-15:30

*Father's Involvement in Stimulating Children's School Readiness*

Ika Yuniar Cahyanti, Faculty of Psychology Universitas Airlangga, Indonesia

0265 – 15:30-16:00

*Effects of Demand/Withdraw Communication between Mother and Adolescents on Over-Adaptation*

Keigo Asai, Tohoku University, Japan

0093 – 16:00-16:30

*Adolescence's Perception on Mother Versus Father Parenting*

Yapina Widyawati, Atma Jaya Indonesia Catholic University, Indonesia

Christiany Suwartono, Atma Jaya Indonesia Catholic University, Indonesia

Saturday Session 4: 15:00-16:30

Room: Sugi

ACP – Interdisciplinary

Session Chair: Peter Eachus

0044 – 15:00-15:30

*Personal Communicative Activity in a Cultural Adaptation Process*

Tatiana Pilishvili, People's Friendship University of Russia, Russia

0136 – 15:30-16:00

*Predictors of the Enjoyment and Missing Experiences of Malaysian Students in Home Country and Overseas*

Mazni Mustapha, Plymouth University, UK

Michael E. Hyland, Plymouth University, UK

0140 – 16:00-16:30

*Development of a Joint Psychology Programme between the University of Salford and the Open University of Hong Kong: Connections, Conflicts and Resolutions*

Peter Eachus, University of Salford, UK

Andrew Tang, Open University of Hong Kong, Hong Kong



S  
a  
t  
u  
r  
d  
a  
y

Saturday Poster Session: 15:00-16:30

Saturday Poster Session: 15:00-16:30

Room: Tsuki

ACP - Interdisciplinary

0301

*The Antecedents and Consequences of Attitudes toward Group on University Club activities*  
Haruki Takada, University of Tsukuba, Japan

0411

*Learn to Cope with Hypoglycemia in Patients with Diabetes*  
Fei Ling Wu, Chang Gung University of Science and Technology, Taiwan

0419

*A Look at Antecedents and Consequences of Perceiving Vicarious Goal Support in Close Female Friendships*  
Noemie Carbonneau, McGill University, Canada  
Marina Milyavskaya, McGill University, Canada  
Sook Ning Chua, McGill University, Canada  
Richard Koestner, McGill University, Canada

0483

*Competition Anxiety in Egyptians Children Sportsmen*  
Ahmed Ali, Mansoura University, Egypt  
Amr Hassan, Mansoura University, Egypt

0082

*Psycho-Situational Predictors of Dental Patient Compliance*  
Suteera Techatanawat, Srinakharinwirot University, Thailand  
Wannakanok Chuenchomrat, Srinakharinwirot University, Thailand  
Jittima Makrudthong, Srinakharinwirot University, Thailand

0537

*Connecting Children to Adults: On the Effects of Thinking and Physical Appearance*  
Carlos Hernández-Blasi, Universitat Jaume I, Spain  
David Bjorklund, Florida Atlantic University, USA  
Virginia Periss, Florida Atlantic University, USA  
Marcos Ruiz-Soler, Universidad de Málaga, Spain  
Sigríð Gallego, Universitat Jaume I, Spain

0210

*The Patterns of Support Resources the Students Who Were Engaged in Japanese Job-Hunting Perceive*  
Masashi Mizuno, University of Tsukuba, Japan  
Jun Sato, Ibaraki Prefectural University of Health Sciences, Japan

0188

*Perceived Severity of School Bullying among Participant Roles in Taiwan Elementary Schools*  
Li-Ming Chen, National Sun Yat-sen University, Taiwan  
Ying-Yao Cheng, National Sun Yat-sen University, Taiwan  
Wen Cheng, National Sun Yat-sen University, Taiwan  
Hsiu-I Hsueh, National Sun Yat-sen University, Taiwan

0262

*Ear-Based Learning Enhances Auditory-Motor Associations in Musicians*  
Takafumi Kajihara, The University of Tokyo, Japan  
Lauren Stewart, Goldsmiths, University of London, UK

0256

*Social Skill Learning in a High Context Culture-Interpretation and Implementation*  
Koji Mikushi, Okayama University, Japan  
Tomoko Tanaka, Okayama University, Japan



S  
a  
t  
u  
r  
d  
a  
y

**Saturday Poster Session: 15:00-16:30**

0204

*The Effects of Metacognitive and Motivational Regulation Strategies on Cognitive Strategies*  
Takatoyo Umemoto, Nagoya University, Japan

0198

*Relationship between Social Skills and Mental Health in Japanese Adolescents*  
Takeshi Fujiwara, University of Tsukuba, Japan  
Yoshikazu Hamaguchi, University of Tsukuba, Japan

**Saturday Film Session: 15:00-16:00**

**Saturday Film Session: 15:00-16:00**

**Room: Fuji**

**ACP – Psychology: Mental Health**

0229

*Memory of My Face: Exploring Madness in a Globalizing World*  
Robert Lemelson, UCLA, USA

**Featured Speaker Presentation**

**16:45-18:15**

**Sakura Room 2F**

**16:45-17:15**

**Monty Satiadarma**

*Münchhausen by Internet: Psychological Concerns in Modern Communication Systems*

**17:15-18:15**

**Sandra Neil**

*New Concepts in Family Psychology: Reconnection of Couples, Families and Cultures; Through Affinity, Love and Compassion*



S  
a  
t  
u  
r  
d  
a  
y



# Sunday



Sunday Session 1: 9:00-10:30

Sunday Session 1: 9:00-10:30

Room: Sakura A

ACP/ACERP – Interdisciplinary

Session Chair: Wing Kwan Anselm Lam

0543 – 9:00-9:30

*Social and Technological Support for Stigmatized Diseases: A Case of Tuberculosis Patient-Care in India*  
Yin-Leng Theng, Nanyang Technological University, Singapore  
Lynette Goh, Nanyang Technological University, Singapore  
May O. Lwin, Nanyang Technological University, Singapore

0207 – 9:30-10:00

*The Function of Virtue "Observing Kinship Relation" on Strengthening the Virtual Relations as a Developing Step Toward Real Relations from an Islamic Prospective*  
Yahya Jahangiri, International Institute of Islamic Studies, Iran  
Mohammad Monib, International Institute of Islamic Studies, Iran

0333 – 10:00-10:30

*The Online Self and his/her Relationship with Other Online Selves: A Rousseauian Analysis*  
Wing Kwan Anselm Lam, Hang Seng Management College, Hong Kong

Sunday Session 1: 9:00-10:30

Room: Sakura B

ACP – Psychology: Psychology and Education

Session Chair: J.Rosalina Kristyanti

0325 – 9:00-9:30

*Novice Teachers' Intrinsic Motivation to Work during the Induction Year*  
Eve Eisenschmidt, Tallinn University, Estonia  
Merilyn Meristo, Tallinn University, Estonia

0450 – 9:30-10:00

*Validating and Improving Reliability of the Student Evaluation of Teaching Scale Using Multidimensional Rasch Model*  
Ching-Lin Shih, National Sun Yat-sen University, Taiwan  
Guo-Wei Sun, National Sun Yat-sen University, Taiwan  
Chi-Chen Chen, National Sun Yat-sen University, Taiwan  
Cheng-Te Chen, National Tsing Hua University, Taiwan

0186 – 10:00-10:30

*Seeking Meaning in Diversity*  
J.Rosalina Kristyanti, Sampoerna School of Education, Indonesia



S  
u  
n  
d  
a  
y



Sunday Session 1: 9:00-10:30

Sunday Session 1: 9:00-10:30

Room: Kusu

ACP – Interdisciplinary

Session Chair: Gillian Stevens

0143 – 9:00-9:30

*An Exploratory Study of Problematic Facebook Use Using Qualitative Methods*  
Tracii Ryan, RMIT University, Australia  
Andrea Chester, RMIT University, Australia  
Sophia Xenos, RMIT University, Australia

0153 – 9:30-10:00

*Social Bond on Indonesian Higher-Education Students Who Access Facebook*  
Azalia Muchransyah, Universitas Indonesia, Indonesia  
Tri Iswardani, Universitas Indonesia, Indonesia

0152 – 10:00-10:30

*Is Personality Type a predictor of Social Network Connections?*  
Gillian Stevens, Asian Institute of Management, Philippines  
Matthew Escobido, Asian Institute of Management, Philippines

Sunday Session 1: 9:00-10:30

Room: Kashi

ACP/ACERP – Interdisciplinary

Session Chair: Morekwe Selemogwe

0361 – 9:00-9:30

*Social Policy and Female-Headed Household in the Post Revolutionary Iran*  
Shokouh Dibaji Forooshani, Independent Researcher, Iran

0139 – 9:30-10:00

*Understanding the Situation of the Mental Disorders in the Sultanate of Oman*  
Ahmed Al Araiimi, Mazoon University College, Oman

0534 – 10:00-10:30

*The Progress of Clinical Psychology in Botswana*  
Morekwe Selemogwe, University of Botswana, Botswana



S  
u  
n  
d  
a  
y

Sunday Session 2: 10:45-12:15

Sunday Session 2: 10:45-12:15

Room: Sakura A

ACP – Psychology: Psychology in the Asian Context (Comparing and Contrasting)

Session Chair: James McNally

0108 – 10:45-11:15

*South Asian and Chinese Conceptions of a Good Life and their Relation to Experience*  
Gregory Bonn, Monash University, Malaysia

0128 – 11:15-11:45

*Taiwanese Parents' Reaction to the Achievement of Their Children: Vertical Distinctiveness Versus Horizontal Distinctiveness*  
Kuei-Hsiang Han, Tamkang University, Taiwan

0517 – 11:45-12:15

*Measuring the Level of Psychological Distress among Adult Children in Relation to the Health of a Coresident Parent: Comparing Asian and Non-Asian Adults Response Patterns within the United States*  
James McNally, University of Michigan, USA



Sunday Session 2: 10:45-12:15

Room: Sakura B

ACP – Interdisciplinary

Session Chair: Robert J. Taormina

0270 – 10:45-11:15

*The Relationships of Trust in Supervisor, On-the-Job Embeddedness, and Intentions to Leave: Testing the Mediating Effect of On-the-Job Embeddedness*

Debora Purba, Erasmus University Rotterdam, Netherlands

Janneke Oostrom, VU University Amsterdam, Netherlands

Marise Born, Erasmus University Rotterdam, Netherlands

Henk van der Molen, Erasmus University Rotterdam, Netherlands

0465 – 11:15-11:45

*Trust, Trustworthiness and Justice Perception in the Head of Department*

Chua Bee Seok, Universiti Malaysia Sabah, Malaysia

Norazah Hamzah, Universiti Malaysia Sabah, Malaysia

Tan Cho Chiew, Universiti Malaysia Sabah, Malaysia

0035 – 11:45-12:15

*Measuring Trust in China: Resolving Eastern and Western Differences in Concepts of Trust*

Robert J. Taormina, University of Macau, Macao

S  
u  
n  
d  
a  
y

Sunday Session 2: 10:45-12:15

Sunday Extended Session 1: 10:45-12:45 Room: Kusu

ACP – Psychology: Industrial Organization and Organization Theory

Session Chair: Mohd Dahlan Hj. A. Malek

0220 – 10:45-11:15

*Risk Assessment Tool for Adverse Outcomes of Occupational Stress: Development and Investigation of Psychometric Properties*  
Nataša Sedlar, Sociomedical Institute at Scientific Research Centre of the Slovenian Academy of Sciences and Arts, Slovenia  
Tatjana Novak, Sociomedical Institute at Scientific Research Centre of the Slovenian Academy of Sciences and Arts, Slovenia  
Lilijana Šprah, Sociomedical Institute at Scientific Research Centre of the Slovenian Academy of Sciences and Arts, Slovenia  
Gregor Sočan, University of Ljubljana, Slovenia, Slovenia

0163 – 11:15-11:45

*Developing Surabaya Emotional Intelligence Test to Enhance Effective Connectedness in Daily & Work Life*  
Fajrianthi Abu Hanifah Primariawan, Airlangga University, Indonesia

0556 – 11:45-12:15

*Nature of Employees' Tacit Knowledge: A Qualitative Inquiry*  
Rajiv Kumar, Indian Institute of Management Calcutta, India

0231 – 12:15-12:45

*The Moderating Effect of Work Motivation and Coping Strategies on Job Satisfaction and Psychological Well Being among Fire Fighters*  
Mohd Dahlan Hj. A. Malek, Universiti Malaysia Sabah, Malaysia  
Ida Shafinaz Mohamed Kamid, Universiti Malaysia Sabah, Malaysia

Sunday Extended Session 2: 10:45-12:45 Room: Kashi

ACP – Interdisciplinary

Session Chair: Janice Richardson

0356 – 10:45-11:15

*Postmodern Identity Politics and the Social Tyranny of the Definable*  
William Franke, University of Macao, Macao

0494 – 11:15-11:45

*Freedom of Speech and Doctrine of Personal Privacy: A Comparative Law Analysis Originating from a South Korean Case*  
Giovanni Tamburrini, Solbridge International School of Business, Korea

0436 – 11:45-12:15

*Hermetic Life and the (im)mobile Walk(less)man*  
Joff Bradley, Toyo University, Japan

0409 – 12:15-12:45

*European Legal Perspectives on the Relationship between Self and Other: The impact of Feminism and Technology*  
Janice Richardson, Monash University, Australia



S  
u  
n  
d  
a  
y

Sunday Session 2: 10:45-12:15

Sunday Session 2: 10:45-12:15

Room: Hana

ACP – Interdisciplinary

Session Chair: Dee Anand

0320 – 10:45-11:15

*Factoring in the Correct Answers Ratio in a Psycho-Educational Program*

Yukako Nakane, Ochanomizu University, Japan

Ayako Ito, Ochanomizu University, Japan

0159 – 11:15-11:45

*The Effect of Expectancies for Social Support on Mood Regulation Expectancies and Self-Injury*

Fiona Tresno, Nagoya University, Japan

Jack Mearns, California State University, USA

0516 – 11:45-12:15

*Do Neuroticism, Social Isolation and Emotional Deprivation Play a Role in Malevolent Creativity?*

Dee Anand, University of Portsmouth, UK

Georgia Halls, University of Portsmouth, UK



Special Event: Calligraphy Workshop

12:30-13:00

Sakura 2F

書道: Pronounced 'Sho do'

The Japanese have been practicing the art of calligraphy from the 6th century.

Come try your hand at this ancient art with a short introduction from students of renowned international university, Ritsumeikan University.

S  
u  
n  
d  
a  
y



Sunday Session 3: 13:15-14:45

Sunday Session 3: 13:15-14:45

Room: Sakura A

ACP – Philosophy: Philosophy and Religion

Session Chair: Ching-wa Wong

0321 – 13:15-13:45

*The Master-Slave/Master-Student Dialectic: Kojève-Levinas on Alienation as Condition of Entry into Society*  
Terence Holden, Ecole des hautes études en sciences sociales, France

0518 – 13:45-14:15

*Dialectic as Spiritual Experience*  
Giuseppe Tassone, University of Balamand, Lebanon

0323 – 14:15-14:45

*The Quest for Spirituality: A Psychoanalytic Approach*  
Ching-wa Wong, Hong Kong Polytechnic University, Hong Kong

Sunday Session 3: 13:15-14:45

Room: Sakura B

ACP – Psychology: Qualitative/Quantitative Research in any other area of Psychology

Session Chair: Max Vercruyssen

0507 – 13:15-13:45

*Show vs. Tell: How Parental Mediation Affects their Children's Exercise Motivations, Attitudes and Behaviours*  
Dharshini Subbiah, Nanyang Technological University, Singapore  
May Lwin, Nanyang Technological University, Singapore  
Shirley Ho, Nanyang Technological University, Singapore

0145 – 13:45-14:15

*The Effect of Exer-game Messaging in Children's Psychology - Attitude and Behaviours towards Physical Exercise*  
Aneesha Subramaniam, Nanyang Technological University, Singapore  
Kai Jie Chong, Nanyang Technological University, Singapore  
Santhiya Kulasakeran, Nanyang Technological University, Singapore  
Boshu Zhao, Nanyang Technological University, Singapore

0552 – 14:15-14:45

*Modeling Age Changes and Sex Differences in Physical Fitness Across the Human Lifespan*  
Max Vercruyssen, Hawaii Academy, USA and University of Hawaii, USA  
Sreang Heak, Hawaii Academy, USA and University of Hawaii, USA  
Donna Mah, Hawaii Academy, USA and John A Burns School of Medicine, USA  
Yasuhiro Ueyama, Hawaii Academy, USA and Osaka University of Health and Sport Sciences, Japan



S  
u  
n  
d  
a  
y

Sunday Session 3: 13:15-14:45

Sunday Session 3: 13:15-14:45

Room: Kusu

ACP – Psychology: General Psychology

Session Chair: Jim Bierman

0141 – 13:15-13:45

*Personal and Social Connectedness Mediated by Self-Esteem*  
Kevin Solomons, University of British Columbia, Canada

0249 – 13:45-14:15

*Cognitive and Affective Empathy: Is it connected?*  
Primatia Yogi Wulandari, Airlangga University, Indonesia

0056 – 14:15-14:45

*Of Sound Mind to Marry: Assessment of Marital Maladjustment and Premarital Counseling*  
Jim Bierman, Individual Researcher, USA



Sunday Film Session: 13:15-14:15

Saturday Film Session: 13:15-14:15

Room: Kashi

ACP – Psychology: Mental Health

0229

*Memory of My Face: Exploring Madness in a Globalizing World*  
Robert Lemelson, UCLA, USA

S  
u  
n  
d  
a  
y



Sunday Session 3: 13:15-14:45

Sunday Session 3: 13:15-14:45

Room: Hana

ACP – Poster - Interdisciplinary

0283

*Relationship between Attitudes towards Ambiguity and Depression: A Comparative study of Attitudes Towards Ambiguity Scale and SDS*  
Hiroyuki Enoki, University of the Ryukyus/ Heiwa Hospital, Japan, Japan  
Munenaga Koda, University of the Ryukyus, Japan  
Tsuyoshi Kondo, University of the Ryukyus, Japan  
Satoshi Odo, Heiwa Hospital, Japan

0076

*Caregivers' Communication with Terminal Cancer Patients about Illness and Death: The Role of Gender*  
Yaacov G. Bachner, Ben Gurion University of the Negev, Israel  
Nily Y. Sela, Ben Gurion University of the Negev, Israel  
Sara Carmel, Ben Gurion University of the Negev, Israel

0216

*Do Perceptions of "Solved Stress Events" Need? An Examination of the Effects of Interpersonal-Stress Coping on Mental Health via "the Perception of Solved Interpersonal Stress Events"*  
Masahiro Takamoto, University of Tsukuba, Japan

0144

*Influence of Mental Models of Attachment at Middle Childhood to Self-Esteem at Adolescence in Japanese Sample: Using Retrospective Method*  
Tatsuya Murakami, University of Tsukuba, Japan

0124

*The Psychological Outpatient Service Model in Taiwan*  
Chao-Ying Chung, Mackay Memorial Hospital, Taiwan

0434

*Model of Volunteer Network to Promote the Mental Health of Thai Helpless Elders in Urban Areas: A Case Study of Muang Municipality in Uttaradit, North of Thailand*  
Prapaporn Manorath, Boromarajonani College of Nursing, Thailand  
Phanphilai Suthana, Boromarajonani College of Nursing, Thailand

0308

*Role Conflicts and Stressors of the In-Service Nursing Students*  
Minli Yeh, Oriental Institute of Technology, Taiwan

0228

*Children's Authenticity, Intrinsic Motivation and Praise*  
YungKang Hsu, ChengChi University, Taiwan

0379

*Medical Morality in Islamic Civilization*  
Gholamreza Montazeri, Gorgan Agricultural and Natural Sciences, Iran

0455

*Patients' Perception of their Patient rights as Compared to Compliance with such Patient Rights as Exhibited by Nurses when They Incorporate the Patient into the bedside Teaching of Nursing Students*  
Dongjai Pianbumroong, Boromarajonani College of Nursing, Thailand



S  
u  
n  
d  
a  
y

Sunday Session 4: 15:00-16:30

Sunday Session 4: 15:00-16:30

Room: Sakura A

ACP – Interdisciplinary

Session Chair: Veronika Suprapti

0157 – 15:00-15:30

*Coping and Adaptation in the Process of Resilience, in Individuals who Experience Disability in Adulthood*  
Wiwini Hendriani, Airlangga University, Indonesia

0296 – 15:30-16:00

*A Study on the Prototype of a Mobile AR System for Participatory Design of Interior Refurbish*  
Wei-shin Hong, Tatung University, Taiwan  
Li-Chieh Chen, Tatung University, Taiwan

0212 – 16:00-16:30

*A Woman's Resilience on Gender Debate with Her Mentor: A Follow Up*  
Veronika Suprapti, Airlangga University, Indonesia

Sunday Session 4: 15:00-16:30

Room: Sakura B

ACERP – Interdisciplinary

Session Chair: Terri Storseth

0388 – 15:00-15:30

*The Self Identity of Hakka Revealed in Language Diversities*  
Raung-fu Chung, Southern Taiwan University, Taiwan

0442 – 15:30-16:00

*On the Roots of Globalization. Socio-Political Considerations*  
Mihai Vladimirescu, University of Craiova, Romania

0499 – 16:00-16:30

*The Mystics: Illuminating a Spiritual Path for All*  
Terri Storseth, American University of Sharjah, UAE  
Adrian Zytoskee, American University of Sharjah, UAE

Sunday Session 4: 15:00-16:30

Room: Kusu

ACP – Interdisciplinary

Session Chair: Estrella Perez

0160 – 15:00-15:30

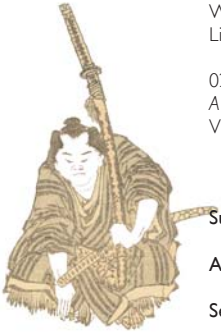
*Detecting and Adapting to Changes in Causal Systems*  
Kevin Soo, HELP University, Malaysia

0267 – 15:30-16:00

*Children's Understanding of First- and Second-Order False Beliefs in One Narrative*  
Kumiko Matsumoto, Ochanomizu University, Japan

0520 – 16:00-16:30

*Coping Lifestyles of Retired Faculty Members and Staff of the Don Mariano Marcos Memorial State University, La Union, Philippines*  
Estrella Perez, Don Mariano Marcos Memorial State University, Philippines



S  
u  
n  
d  
a  
y



Sunday Session 4: 15:00-16:30

Sunday Session 4: 15:00-16:30

Room: Kashi

ACP – Psychology: Linguistics, Language and Psychology/Behavioral Science

Session Chair: Anatoliy Kharkhurin

0038 – 15:00-15:30

*Raising Awareness in Language Learners for Developing Motivational Self-regulation*  
Julide Inozu, Cukurova University, Turkey  
Seden Tuyan, Cukurova University, Turkey

0441 – 15:30-16:00

*Bilingualism Helps Asian Families Flourish*  
Gina Ko, Athabasca University, Canada

0177 – 16:00-16:30

*Multilingual Creative Cognition: How Multilingual Practice Encourages Cognitive Mechanism Facilitating Creative Potential*  
Anatoliy Kharkhurin, AUS, UAE

Sunday Session 4: 15:00-16:00

Room: Hana

ACP – Psychology: Linguistics, Language and Psychology/Behavioral Science

Session Chair: Machiko Tomiyama

0326 – 15:00-15:30

*Understanding the Nature of Auditory Recognition of Grammatical Errors from the Perspective of Word Order*  
Hirokatsu Kawashima, Nagasaki University of Foreign Studies, Japan

0502 – 15:30-16:00

*Literacy Skills Acquisition: A Preventive Measure for Second Language Attrition*  
Machiko Tomiyama, International Christian University, Japan

16:45-17:00

Closing Session and Conference Photo

Conference Co-chairs Monty Satiadarma and Dexter Da Silva

IAFOR Executive Director Joseph Haldane



S  
u  
n  
d  
a  
y



# Virtual



Virtual Presentations

0536 Psychology: General Psychology  
*Development and Validation of East Asian Dynamic Facial Expression Set*  
June Kang, Korea University, Korea

0229 Psychology: Mental Health  
*Memory of My Face: Exploring Madness in a Globalizing World*  
Robert Lemelson, UCLA, USA

0127 Psychology: General Psychology  
*Multiple Creativities: A Task to Set up a New Model to Creative Thinking*  
Hossam-Eddin Abulhassan Hassan, Jazan University & Saudi Arabia-South Valley University, Saudi Arabia

0312 Psychology: Psychology in the Asian Context (Comparing and Contrasting)  
*Cross-cultural Consideration in the Contribution to Somatisation*  
Ming Meng, Deakin University, Australia

0202 Psychology: Community Development  
*The Role of Empathy in Experiencing of Loneliness of Others and Existential-Behavioral Training in the Empathy Development*  
Emma Meshcheryakova, Tomsk State University, Russia  
Elena Litke, Retirement Fund of Tomsk Region of Russian Federation, Russia

0258 Psychology: Psychology and Education  
*Altruism Among Teachers in Jakarta*  
Reza Olitalia, Tarumanagara University, Indonesia  
Erik Wijaya, Tarumanagara University, Indonesia  
Laksmiari Saraswati, Tarumanagara University, Indonesia  
Khadijah Almakiyah, Tarumanagara University, Indonesia

0247 Psychology: Psychology in the Asian Context (Comparing and Contrasting)  
*Emotion Regulation: A Critical Review of Cross-cultural Validity*  
Kullaya Pitsungkagarn, Chulalongkorn University, Thailand  
Phongmanus Busayaprateep, Chulalongkorn University, Thailand

0486 Psychology: Linguistics, Language and Psychology/Behavioral Science  
*Applying Technology-Mediation to Assist Junior College Students to Learn Japanese as 2nd Language and Improve the Efficiency*  
Hsiu-Ching Shih, National Taiwan Normal University, Taiwan

0445 Psychology: Qualitative/Quantitative Research in any other area of Psychology  
*The Relationships between Workplace Mobbing and Psychological Health Outcomes: Is Personality a Moderating Factor?*  
Lutfiye Kaya Cicereli, Istanbul Uskudar University, Turkey

0410 Psychology: Psychology in the Asian Context (Comparing and Contrasting)  
*The Indonesian Moslem Marital Quality Scale: Development, Validation, and Reliability*  
Hepi Wahyuningsih, Islamic University of Indonesia, Indonesia  
Sartini Nuryoto, Gadjah Mada University, Indonesia  
Tina Afiatin, Gadjah Mada University, Indonesia  
Avin Helmi, Gadjah Mada University, Indonesia

0309 Philosophy and Education  
*The Impact of Parenting Intervention Program-Spiritual Approach Version on Parenting Stress of Indonesian Parents*  
Irwan Kurniawan, Universitas Islam Indonesia, Indonesia  
Herbert Scheithauer, Freie Universität Berlin, Germany

0233 Philosophy: Philosophy and Religion  
*The Catholic Church and Abortion: An Examination of Immediate Animation and Hylomorphism*  
Mark Rankin, Flinders University, Australia

0438 Philosophy: Philosophy and Education  
*Beyond Kolmogorov Philosophy*  
Seifedine Kadry, American University of the Middle East, Kuwait

0341 Philosophy: Philosophy and Education  
*Ricoeur's Dialectic of Distanciation and Appropriation in the Asynchronous, Online College Classroom*  
Christopher Myers, American Public University, USA



V  
i  
r  
t  
u  
a  
l

Virtual Continued

0062 Ethics: Medical Ethics

*Understanding Euthanasia in Heidegger's Concept of Technology*  
Minwan Xu, University of New South Wales, Australia

0250 Ethics: Comparative Ethics

*Theses on Prolegomena to Ethics*  
Andrey Zheleznov, Ural Federal University, Russia

0519 Religion and Education

*The Principles of St. Anthony the Great Concerning the Spiritual Aspect of the Monastic Community*  
Mitu Costel, Ovidius University, Romania

0431 Philosophy: Philosophy and Religion

*Is Self-Defeating the Self-Fulfilling Prophecy of Judaism?*  
Luis Homem, University of Lisbon, Portugal

0006 Psychology: Psychology in the Asian Context (Comparing and Contrasting)

*The Comparison of Personality Dimensions of Blood-pressure People with Normal People*  
Froogh Abiri, Islamic Azad University, Iran



V  
i  
r  
t  
u  
a  
l



# Index



## A-Z Index

Abiri, Froogh	0006	pp. 38	Chung, Chao-Ying	0124	pp. 32
Afiatin, Tina	0410	pp. 37	Chung, Raung-fu	0388	pp. 33
Ali, Ahmed	0483	pp. 21	Cicerali, Lutfiye Kaya	0445	pp. 37
Allen, Kelly	0564	pp. 15	Costel, Mitu	0519	pp. 38
Almakiyah, Khadijah	0258	pp. 37	Cristini, Helene	0514	pp. 19
ALTwajiri, Saleh	0100	p. 3	Cummins, Robert	0217	p. 3
Ambarini, Tri Kurniati	0350	pp. 12	Daibo, Ikuo	0324	pp. 16
Amir, On	0106	p. 7	Darus, Azlan	0098	pp. 14
Anand, Dee	0516	pp. 29	Davis, J. Mark	0232	pp. 14
Araimi, Ahmed Al	0139	pp. 26	De-Merich, Diego	0230	pp. 17
Asai, Keigo	0265	pp. 20	Decha-ananwong, Phakphoom	0272	pp. 20
Azman, Mohammed	0098	pp. 14	Dewi, Fransisca Iriani Roesmala	0286	p. 3
Bachner, Yaacov G.	0076	pp. 32	Dewi, Puspasari	0236	p. 7
Banda-Cruz, Daniel	0122	p. 2	Dickey, Thia	0278	pp. 20
Bhanthumnavin, Duangduen	0077	pp. 11	Diniz, José Alves	0135	p. 6
Bhanthumnavin, Duchduen	0078	pp. 11	Dixon, Harry	0342	p. 2
Bhanthumnavin, Vutthi	0078	pp. 11	Dixon, Harry	0339	p. 2
Bierman, Jim	0056	pp. 31	Domingo, Rosallia	0407	pp. 14
Bjorklund, David	0537	pp. 21	Dubey, Surendra Nath	0148	pp. 12
Bonn, Gregory	0108	pp. 27	Dwiprahasto, Iwan	0246	p. 3
Boonyasiriwat, Watcharaporn	0482	pp. 18	Eachus, Peter	0140	pp. 20
Born, Marise	0270	pp. 27	Eisenschmidt, Eve	0325	pp. 25
Bowles, Terry	0564	pp. 15	ElNaggar, Abdelwahab	0100	p. 3
Bradley, Joff	0436	pp. 28	Emilia, Ova	0246	p. 3
Budi, Eko	0236	p. 7	Enoki, Hiroyuki	0283	pp. 32
Bui, Loan	0500	pp. 20	Escobido, Matthew	0152	pp. 26
Busayaprateep, Phongmanus	0247	pp. 37	Fahmie, Arief	0132	pp. 17
Cahyanti, Ika Yuniar	0368	pp. 20	Fang, Chun-Wen	0281	p. 6
Cai, Jinglu	0195	pp. 16	Fang, Jy-Kuang	0400	pp. 15
Carbonneau, Noemie	0419	pp. 21	Ferreira, Mafalda	0135	p. 6
Carmel, Sara	0076	pp. 32	Flicker, Sharon	0500	pp. 20
Chaikongkiat, Preeyanuch	0476	pp. 18	Forooshani, Shokouh Dibaji	0361	pp. 26
Chan, Carmen W.H.	0115	p. 7	Fotou, Maria	0230	pp. 17
Chan, Tin-chi	0504	p. 8	Franke, William	0356	pp. 28
Chang, Chi-Chang	0174	pp. 12	Fridari, Diah	0236	p. 7
Chang, Yuhuan	0239	pp. 12	Fu, Chao-Ching	0553	pp. 11
Chang, Yuhuan	0266	p. 8	Fujiwara, Takeshi	0198	pp. 22
Chantarasiribhub, Bunkanus	0476	pp. 18	Gallego, Sigríd	0537	pp. 21
Chen, Cheng-Te	0450	pp. 25	Gaspar de Matos, Margarida	0135	p. 6
Chen, Chi-Chen	0450	pp. 25	Gheorghiu, Mirona	0278	pp. 20
Chen, Chih-Hsien	0444	pp. 18	Goh, Lynette	0543	pp. 25
Chen, Chih-Hsien	0446	p. 5	Ha, TshuiSun	0107	p. 3
Chen, Chin Shih	0281	p. 6	Hakanson, Cecilia	0169	pp. 12
Chen, Hsiao Ching	0290	p. 5	Halls, Georgia	0516	pp. 29
Chen, Li-Chieh	0245	p. 6	Hamaguchi, Yoshikazu	0198	pp. 22
Chen, Li-Chieh	0281	p. 6	Hamzah, Aswati	0288	pp. 17
Chen, Li-Chieh	0296	pp. 33	Hamzah, Norazah	0465	pp. 27
Chen, Li-Chieh	0377	pp. 19	Han, Kuei-Hsiang	0128	pp. 27
Chen, Li-Ming	0188	pp. 21	Hanasaki, Nobuko	0310	pp. 19
Chen, M-H. Mia	0245	p. 6	Handayani, Muryantinah Mulyo	0158	pp. 19
Chen, Ming-Hsiu Mia	0180	pp. 19	Hassan, Amr	0483	pp. 21
Chen, Szu-Fan	0444	pp. 18	Hassan, Hossam-Eddin Abulhassa	0127	pp. 37
Chen, Szu-Fan	0446	p. 5	Hastuti, Rahmah Samsuniwijati	0287	pp. 15
Cheng, Mei-Chu	0245	p. 6	Hatkanagalekar, Revati	0268	pp. 16
Cheng, Wen	0188	pp. 21	Heak, Sreang	0552	pp. 30
Cheng, Ying-Yao	0188	pp. 21	Helleve, Arnfinn	0464	pp. 16
Chester, Andrea	0143	pp. 26	Helmi, Avin	0410	pp. 37
Chien, Mei-hua	0022	p. 7	Hendriani, Wiwin	0157	pp. 33
Chiew, Tan Cho	0465	pp. 27	Hernández-Blasi, Carlos	0537	pp. 21
Chishima, Yuta	0305	pp. 16	Hirano, Misa	0123	pp. 13
Chiu, Ya-Kang	0394	pp. 15	Ho, Shirley	0507	pp. 30
Chong, Kai Jie	0145	pp. 30	Ho, Shu-ming	0504	p. 8
Chow, Ka Ming	0115	p. 7	Holden, Terence	0321	pp. 30
Christia, Mellia	0464	pp. 16	Holmqvist, Caroline	0230	pp. 17
Chua, Sook Ning	0419	pp. 21	Homem, Luis	0431	pp. 38
Chuenchomrat, Wannakanok	0082	pp. 21	Hong, Wei-shin	0296	pp. 33
Chui, Chun-ho	0504	p. 8	Hong, Ying-yi	0542	p. 4
			Honma, Yoshiko	0471	pp. 18
			Hotta, Chie	0310	pp. 19
			Hotta, Ikuko	0310	pp. 19



Hoxha, Hajredin	0179	pp. 17	Lee, Win-Chin	0203	pp. 11
Hsieh, Ying-Jiun	0146	p. 4	Lee, Yi-Jung	0203	pp. 11
Hsieh, Ying-Jiun	0211	p. 8	Lee, Yumi	0294	p. 5
Hsu, YungKang	0228	pp. 32	Lemelson, Robert	0229	pp. 37
Hsueh, Hsiu-I	0188	pp. 21	Leung, Ngai-lam	0504	p. 8
Hu, Xiu-Ling	0251	pp. 15	Lien, Ting-Chia	0444	pp. 18
Huang, Bor-shung	0251	pp. 15	Lien, Ting-Chia	0446	p. 5
Huang, Cheng-Hung	0203	pp. 11	Lim, Tan Xiong Gentatsu	0526	p. 8
Huang, Hui-Hsin	0058	p. 7	Lin, Chien-Chih	0245	p. 6
Huang, Jih-Jeng	0359	p. 5	Lin, Hsien-Ming	0223	p. 5
Huang, Lan-Ying	0146	p. 4	Lin, Hui-Ting	0211	p. 8
Huang, Rei-Ying	0334	pp. 19	Lin, Jiun-De	0446	p. 5
Huang, Wei-Shin	0334	pp. 19	Lin, Shu-shan	0223	p. 5
Huang, Yu Di	0245	p. 6	Lin, Yi-Yin	0400	pp. 15
Huang, Yu-Kai	0474	p. 5	Litke, Elena	0202	pp. 37
Huang, Yu-min	0222	p. 8	Liu, Y-Yun	0394	pp. 15
Hyland, Michael E.	0136	pp. 20	Lobel, Orly	0106	p. 7
Ichikawa, Reiko	0209	pp. 18	Lopez-Maya, Eric	0194	pp. 18
Inanc, Gul	0094	p. 6	Lwin, May	0507	pp. 30
Inozu, Julide	0038	pp. 34	Lwin, May O.	0515	pp. 16
Ip, Wan-yim	0115	p. 7	Lwin, May O.	0543	pp. 25
Isaranon, Yokfah	0482	pp. 18	Lwin, May Oo	0526	p. 8
Ismail, Hairul	0288	pp. 17	Lwin, May Oo	0542	p. 4
Iswardani, Tri	0153	pp. 26	Mah, Donna	0552	pp. 30
Ito, Ayako	0320	pp. 29	Makrudthong, Jittima	0082	pp. 21
Jahangiri, Yahya	0207	pp. 25	Malek, Mohd Dahlan Hj. A.	0231	pp. 28
Jeon, Yewon	0509	p. 4	Manorath, Prapaporn	0434	pp. 32
Johnson, Ronn	0342	p. 2	Mar'at, Samsuniwijati	0287	pp. 15
Johnson, Ronn	0339	p. 2	Marczewska-Rytko, Maria	0344	p. 2
Jongrachen, Panidaporn	0167	p. 5	Margalit, Malka	0447	pp. 15
Kadry, Seifedine	0438	pp. 37	Matsumoto, Kumiko	0267	pp. 33
Kajihara, Takafumi	0262	pp. 21	McNally, James	0517	pp. 27
Kamid, Ida Shafinaz Mohamed	0231	pp. 28	Meams, Jack	0159	pp. 29
Kane, Stephen	0185	pp. 13	Meekhun, Kosol	0081	pp. 11
Kang, June	0536	pp. 37	Menaldi, Adhityawarman	0246	p. 3
Kang, Sunwoo	0532	pp. 18	Menaldi, Sri Linuwih	0246	p. 3
Kao, Hsuan-Jan	0377	pp. 19	Meng, Ming	0312	pp. 37
Karaeminogullari, Aysegul	0363	p. 2	Meristo, Marilyn	0325	pp. 25
Kartasasmita, Sandy	0315	p. 3	Meshcheryakova, Emma	0202	pp. 37
Kawaguchi, Jun	0471	pp. 18	Methakornkulnan, Phanchita	0146	p. 4
Kawashima, Hirokatsu	0326	pp. 34	Mikushi, Koji	0256	pp. 21
Kee, Kevin Ng Pek	0511	p. 3	Mikushi, Koji	0290	p. 5
Kekalih, Aria	0246	p. 3	Milyavskaya, Marina	0419	pp. 21
Kharkhurin, Anatoliy	0177	pp. 34	Mizuno, Masashi	0210	pp. 21
Khodayarifard, Mohammad	0012	pp. 14	Mochizuki, Satoshi	0209	pp. 18
Kim, Hyekyeong	0509	p. 4	Mohamed, Mahmood Nazar	0009	p. 6
Kimarskaya, Dina	0129	p. 8	Monib, Mohammad	0207	pp. 25
Ko, Gina	0441	pp. 34	Montazeri, Gholamreza	0379	pp. 32
Koda, Munenaga	0283	pp. 32	Muchransyah, Azalia	0153	pp. 26
Koestner, Richard	0419	pp. 21	Mundada, Nisha	0268	pp. 16
Komura, Kentaro	0215	p. 5	Murakami, Tatsuya	0144	pp. 32
Kondo, Tsuyoshi	0283	pp. 32	Murakami, Tatsuya	0209	pp. 18
Kotrajaras, Supapan	0263	p. 7	Mustapha, Mazni	0136	pp. 20
Kotrajaras, Suppapan	0272	pp. 20	Myers, Christopher	0341	pp. 37
Kristyanti, J.Rosalina	0186	pp. 25	Nakamine, Shin	0324	pp. 16
Ku, Lisbeth	0232	pp. 14	Nakane, Yukako	0320	pp. 29
Ku, Yi-chien	0219	p. 5	Netasit, Ammareet	0508	pp. 15
Kulasakeran, Santhiya	0145	pp. 30	Noguchi, Michie	0299	p. 5
Kumar, Rajiv	0556	pp. 28	Novak, Tatjana	0220	pp. 28
Kuo, Yi-Wen	0474	p. 5	Nuryoto, Sartini	0410	pp. 37
Kurniawan, Irwan	0309	pp. 37	Odo, Satoshi	0283	pp. 32
Kuznetsova, Maria	0448	pp. 12	Ohsawa, Yukio	0195	pp. 16
Lai, Wen-Kuei	0251	pp. 15	Ohsumi, Megumi	0147	pp. 19
Lam, Kon-yee	0504	p. 8	Olitalia, Reza	0258	pp. 37
Lam, Wing Kwan Anselm	0333	pp. 25	Oostrom, Janneke	0270	pp. 27
Lan, Yu-Ling	0239	pp. 12	Osawa, Ayako	0248	pp. 19
Lan, Yu-Ling	0266	p. 8	Partow, Sara	0213	pp. 16
Lee, Ching-Fang	0223	p. 5	Perez, Estrella	0520	pp. 33
Lee, Jo Jo Y.K.	0342	p. 2	Periss, Virginia	0537	pp. 21
Lee, Jo Jo Y.K.	0339	p. 2	Pilishvili, Tatiana	0044	pp. 20

Pisitsungkagarn, Kullaya	0247	pp. 37	Tassone, Giuseppe	0518	pp. 30
Plianbumroong, Doungjai	0455	pp. 32	Techatanawat, Suteera	0082	pp. 21
Pluck, Graham	0122	p. 2	Tekarslan, Erdal	0363	p. 2
Prabandari, Yayi	0246	p. 3	Theng, Yin-Leng	0543	pp. 25
Primariawan, Fajrianthi Abu Hani	0163	pp. 28	Tomiyama, Machiko	0502	pp. 34
Purba, Debora	0270	pp. 27	Tresno, Fiona	0159	pp. 29
Putri, Karina	0236	p. 7	Tsai, Shih-Ting	0180	pp. 19
Rahim, Habibeh	0555	p. 2	Tse, Chun-yiu	0504	p. 8
Rankin, Mark	0233	pp. 37	Tuicomepee, Arunya	0263	p. 7
Rejab, Zall Kepli Md	0009	p. 6	Tuicomepee, Arunya	0272	pp. 20
Richardson, Janice	0409	pp. 28	Tuicomepee, Arunya	0328	pp. 18
Risnawaty, Widya	0286	p. 3	Tung, Chen-Ta	0223	p. 5
Rithakananone, Penpilai	0167	p. 5	Tuyan, Seden	0038	pp. 34
Roswiyani, Roswiyani	0345	pp. 16	Ueyama, Yasuhiro	0552	pp. 30
Ruiz-Soler, Marcos	0537	pp. 21	Umemoto, Takatoyo	0204	pp. 22
Ryan, Tracii	0143	pp. 26	van der Molen, Henk	0270	pp. 27
Santillan-Tayag, Rhoda	0429	pp. 14	van Schalkwyk, Gertina	0232	pp. 14
Sapyaprapa, Siripom	0328	pp. 18	Vanindananda, Ngamta	0079	pp. 11
Saraswati, Laksmiari	0258	pp. 37	Veera, Aninditha	0236	p. 7
Sato, Jun	0210	pp. 21	Vercruyssen, Max	0552	pp. 30
Sato, Ronelle	0130	pp. 12	Vijaykumar, Santosh	0526	p. 8
Scharff, Constance	0280	p. 6	Vladimirescu, Mihai	0442	pp. 33
Scheithauer, Herbert	0309	pp. 37	Wahyuningsih, Hepi	0410	pp. 37
Schwarz, Elke	0230	pp. 17	Wang, Guo-Xiang	0251	pp. 15
Sedlar, Nataša	0220	pp. 28	Wang, Ying-Fen	0446	p. 5
Sela, Nily Y.	0076	pp. 32	Watakakosol, Rewadee	0328	pp. 18
Selemogwe, Morekwe	0534	pp. 26	Watanabe, Hitomi	0197	pp. 18
Seok, Chua Bee	0465	pp. 27	Weiss, Yossi	0261	pp. 11
Sharp, Alastair	0031	p. 3	Widyawati, Yapina	0093	pp. 20
Shih, Ching-Lin	0450	pp. 25	Wijaya, Erik	0258	pp. 37
Shih, Hsiu-Ching	0486	pp. 37	Wijaya, Hariz Enggar	0132	pp. 17
Shih, Yu-Ju	0058	p. 7	Wiria, Ayana	0236	p. 7
Shyu, Shi-Sen	0444	pp. 18	Witruk, Evelin	0294	p. 5
Shyu, Shi-Sen	0446	p. 5	Wong, Alisa Ka-po	0504	p. 8
Sim, Soryoung	0509	p. 4	Wong, Ching-wa	0323	pp. 30
Simic-Yamashita, Mira	0299	p. 5	Wong, Chun-yu	0504	p. 8
Simoes, Celeste	0135	p. 6	Wong, Ka-fai	0504	p. 8
Sirivunnabood, Puntip	0167	p. 5	Wong, Kai-yin	0504	p. 8
Skempton, Simon	0327	pp. 14	Wong, Kei-chun	0504	p. 8
Sočan, Gregor	0220	pp. 28	Wu, Chih-Fu	0203	pp. 11
Solomons, Kevin	0141	pp. 31	Wu, Chih-Fu	0251	pp. 15
Soo, Kevin	0160	pp. 33	Wu, Fei Ling	0411	pp. 21
Sorod, Bung-on	0080	pp. 11	Wulandari, Primatia Yogi	0249	pp. 31
Šprah, Lilijana	0220	pp. 28	Xenos, Sophia	0143	pp. 26
Stevens, Gillian	0152	pp. 26	Xu, Minwan	0062	pp. 38
Stewart, Lauren	0262	pp. 21	Yeh, Minli	0308	pp. 32
Storseth, Terri	0499	pp. 33	Yeo, Su Lin	0542	p. 4
Su, Tin Tin	0098	pp. 14	Yim, Loh Siew	0098	pp. 14
Subbiah, Dharshini	0507	pp. 30	Yoo, Seunghyun	0509	p. 4
Subramanium, Aneesha	0145	pp. 30	Yukawa, Shintaro	0123	pp. 13
Sun, Guo-Wei	0450	pp. 25	Zamhuri, Mohammad Idris	0098	pp. 14
Suprapti, Veronika	0212	pp. 33	Zaroff, Charles	0232	pp. 14
Surya, Indra	0236	p. 7	Zhao, Boshu	0145	pp. 30
Suryadi, Denrich	0316	p. 3	Zheleznov, Andrey	0250	pp. 38
Suthana, Phanphilai	0434	pp. 32	Zytkoskee, Adrian	0499	pp. 33
Suwartono, Christiany	0093	pp. 20			
Taephant, Nattasuda	0263	p. 7			
Tai, Shen-feng	0219	p. 5			
Tajika, Hidetsugu	0310	pp. 19			
Takada, Haruki	0301	pp. 21			
Takahashi, Machiko	0264	pp. 16			
Takamoto, Masahiro	0216	pp. 32			
Tam, Cai Lian	0107	p. 3			
Tamburini, Giovanni	0494	pp. 28			
Tan, Kui Chin	0189	pp. 12			
Tanaka, Tomoko	0256	pp. 21			
Tanaka, Tomoko	0290	p. 5			
Tang, Andrew	0140	pp. 20			
Tang, Pui-kwan	0504	p. 8			
Taormina, Robert J.	0035	pp. 27			

# 2013

## upcoming events



- April 4-7, 2013 - ACAH2013 - The Fourth Asian Conference on Arts and Humanities  
April 4-7, 2013 - LibrAsia2013 - The Third Asian Conference on Literature and Librarianship
- April 25-28, 2013 - ACLL2013 - The Third Asian Conference on Language Learning  
April 25-28, 2013 - ACTC2013 - The Third Asian Conference on Technology in the Classroom
- May 24-26, 2013 - ACAS2013 - The Third Asian Conference on Asian Studies  
May 24-26, 2013 - ACCS2013 - The Third Asian Conference on Cultural Studies
- June 6-9, 2013 - ACSS2013 - The Fourth Asian Conference on the Social Sciences  
June 6-9, 2013 - ACSEE2013 - The Third Asian Conference on Sustainability, Energy and the Environment
- October 23-27, 2013 - ACE2013 - The Fifth Asian Conference on Education  
October 23-27, 2013 - ACSET2013 - The Inaugural Asian Conference on Society, Education and Technology
- November 8-10, 2013 - MediAsia2013 - The Fourth Asian Conference on Media & Mass Communication  
November 8-10, 2013 - FilmAsia2013 - The Second Asian Conference on Film and Documentary
- November 22-24, 2013 - ABMC2013 - The Fourth Asian Business & Management Conference



- July 4-7, 2013 - ECSS2013 - The Inaugural European Conference on the Social Sciences  
July 4-7, 2013 - ECSEE2013 - The Inaugural European Conference on Sustainability, Energy and the Environment
- July 11-14, 2013 - ECE - The Inaugural European Conference on Education  
July 11-14, 2013 - ECTC2013 - The Inaugural European Conference on Technology in the Classroom
- July 18-21, 2013 - ECAH2013 - The Inaugural European Conference on Arts and Humanities  
July 18-21, 2013 - ECLL2013 - The Inaugural European Conference on Language Learning

For more information on all our latest events, please go to [www.iafor.org](http://www.iafor.org)

iafor

iafor

from Japan  
to Britain in 2013  
...Why not join us?