

春

大阪府大阪市

acp  
acerp  
2015





iafor would like to thank our global institutional partners



# ACP2015 ACERP2015 ようこそ！







**ACP/ACERP 2015 Programme Cover Image:  
“Amida Waterfall”**

The image used for the cover of the ACP/ACERP 2015 Conference Programme is from a woodblock print by Katsushika Hokusai (1760-1849). It is one of eight oban-sized woodblock prints in the series “A Journey to the Waterfalls in All the Provinces” (Shokoku Taki Meguri) and was originally published by the Edo publisher, Eijudo, in around 1832.

This print is titled “Amida Waterfall on the Kisokaido Road” (Kisoji no oku Amidagataki) and features two men enjoy a picnic on a cliff jutting out over the Amida falls in Gujo City, Gifu Prefecture, so named for the shape of the hollow from which the falls emerges is thought to resemble the round eye of Amida Buddha.



# welcome to acp/acerp 2015

Dear Colleagues,

We are gathered here in the fantastic Kansai region of Japan, home to the great modern metropolis of Osaka and the nearby artistic and cultural centers of Kyoto and Nara, on the occasion of the Fifth Asian Conferences on Psychology and the Behavioral Sciences, and the jointly run Ethics, Religion and Philosophy.

I would like to welcome you all to this joint conference, that will see some 400 fellow scholars and practitioners from more than 45 countries, from the academic disciplines relating to how and why we think, reason, believe, and behave individually and collectively. The conference theme for the joint event is "Power".

Power in its various forms, hard and soft, political, social, military, economic, and cultural, legitimate and illegitimate, can be defined as the ability to influence or even to control people's thoughts, attitudes and behavior. As such it is at the core of human relations at all levels, from intra-personal to societal and the global. Appropriate or legitimate use of power can lead to remarkable achievement and success. Abuse of power however is the cause of a wide range of societal problems ranging from domestic violence to war. Social psychologists also refer to the power of the situation as a critical but often underestimated factor in human behavior. Systemic or structural relations have inherent power relations, and these are often more influential factors than personal power relations in human behavior.

By focusing on power we can raise awareness of its pervasiveness and transform our thinking about human relations and social and global problems. It also raises awareness of related issues of vulnerability, and human strengths such as resistance and resilience. Awareness and exploration of these issues can result ultimately in the empowerment of individuals, allowing them to resist or change the existing power relations in their lives.

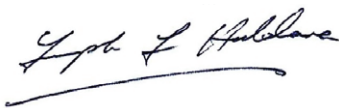
Power, used or abused, conceptually brings together several central philosophical questions of ethics and religion. What is power? What conditions make its exercise legitimate? How is illegitimate use to be defined? Is power itself, as some have claimed, neutral? Can its exercise ever be neutral? Can there be an unconscious use or abuse of power? If so, how does it function?

The concept of power is one subject to perpetual reflection and interpretation, and we are confident that this open theme will excite a number of new research avenues, as we look forward to this being an intellectually stimulating, enlightening and "powerful" event.

I would like to thank the conference chairs, the keynote and featured speakers, and each and every one of you for coming to what promises to be a wonderful celebration of international, intercultural and interdisciplinary research.

I encourage your active involvement throughout the conference, and look forward to meeting you all.

With my warmest regards,



Dr Joseph Haldane, Ph.D. (London), F.R.S.A., F.R.A.S.  
President, IAFOR



letter of welcome





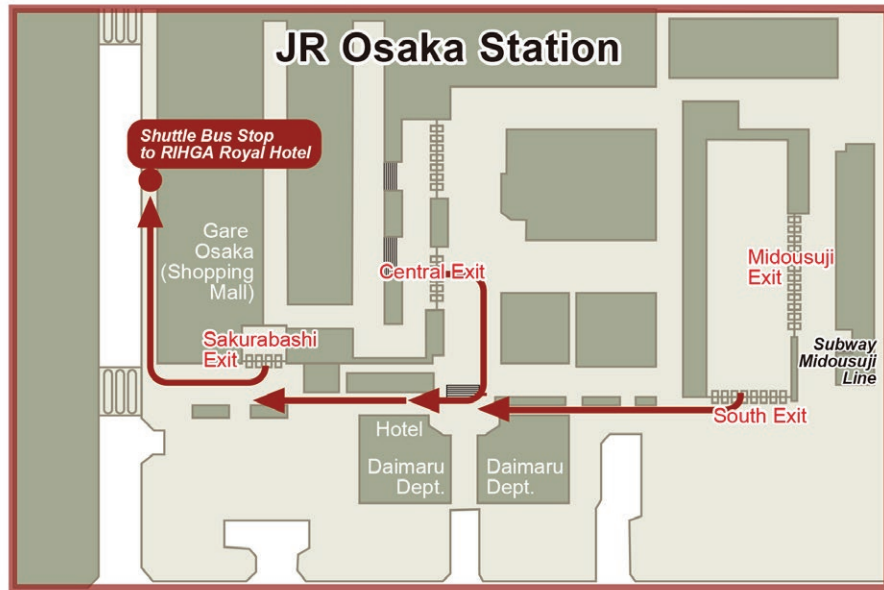
## Getting to the Conference Venue

The Osaka International Convention Center is:

- a 1 minute walk from exit 2 of Keihan Nakanoshima Station (Keihan Nakanoshima Line)
- a 10 minute walk from exit 1 of Awaza Subway Station (Sennichimae Line)
- a 10 minute shuttle bus ride from JR Osaka Station

### Shuttle Bus Access

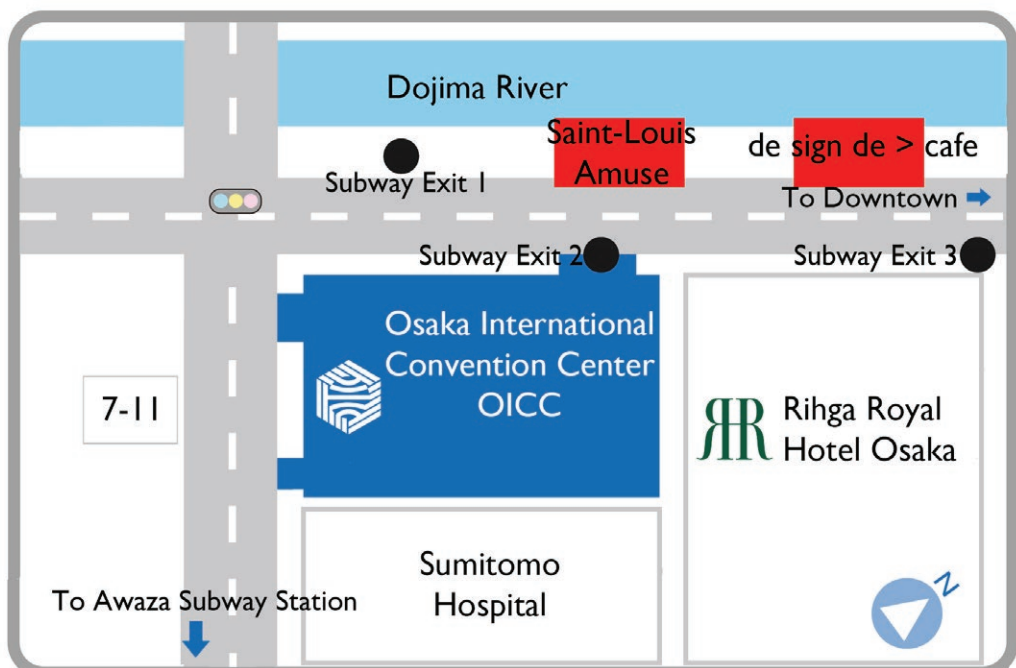
The adjacent Rihga Royal Hotel operates a free shuttle bus service between the city's main rail hub - JR Osaka Station\* - and the hotel. The bus departs from the west side of the station, close to the Sakura-bashi exit. The journey takes 10 minutes, however, as there are limited seats on the bus, there may be a wait to board the bus at peak times.



Operating Hours: 07:45 to 22:15

07:45 - 10:00 every 15 minutes  
10:00 - 21:00 every 6 minutes  
21:00 - 22:15 every 15 minutes

\*JR Kansai Airport Rapid Service trains between Kansai International Airport and Osaka run every 30 minutes





## Information and Registration

If you have already paid online or by bank transfer, you will be able to pick up your registration pack at the Conference Registration and Information Desk. At this time you will also be given a name card. For those wishing to pay on the day, please note that we are able to accept credit cards or Japanese Yen, however, we cannot accept payment in foreign currencies.

The **Conference Registration and Information Desk** will be located at the following locations during the conference:

Thursday	15:00-17:00 - 11F Osaka International Convention Center (Room 1101)
Friday	08:00-17:00 - 12F Osaka International Convention Center (Conference Hall)
Saturday	08:30-17:00 - 10F Osaka International Convention Center (Room 1008)
Sunday	08:30-14:30 - 10F Osaka International Convention Center (Room 1008)

If you have any questions or concerns, IAFOR staff and local volunteers will happily assist you in any way they can.



# conference at a glance

## Thursday, March 26, 2015

### 8:30-17:00: Pre-Conference Tour of Osaka

This is ticketed at 9,000 JPY and is by advanced reservation only.

For more information, please email us at [conferences@iafor.org](mailto:conferences@iafor.org).

If you are registered for the tour, please meet in the Rihga Royal Hotel 1F lobby at 8:15 AM for a prompt 8:45 AM departure.

### 15:00-17:00: Conference Registration & Information Desk Open (OICC 11F - Room 1101)

### 18:00-19:30: Conference Welcome Reception (Saint Louis Amuse)

To open the conference, come and enjoy a few glasses of beer, wine, sake, or a choice of soft drinks if you prefer. You can meet with fellow delegates and network. All registered attendees are welcome. (See map on previous page for access information)

## Friday, March 27, 2015

### 9:00-9:15: Welcome & Introductory Addresses (OICC 12F Conference Hall)

Kiyoshi Mana, IAFOR Director of Operations

Joseph Haldane, IAFOR President

### 9:15-10:00: ACP/ACERP Keynote Presentation (OICC 12F Conference Hall)

Satoru Nishizawa, Yamanashi Prefectural University, Japan

10:00-10:20: Coffee Break

### 10:20-11:10 ACP/ACERP Keynote Presentation (OICC 12F Conference Hall)

Thomas Brian Mooney, Charles Darwin University, Australia

### 11:10-12:00: ACP/ACERP Featured Presentation (OICC 12F Conference Hall)

Mimi Bong, Brain and Motivation Research Institute - Korea University, South Korea

### 12:00-12:30: Taiko Drum Performance & Conference Photograph (OICC 12F Conference Hall)

A powerful taiko drum performance from Akutagawa High School

12:30-13:30: Lunch Break

### 13:30-15:00 Parallel Session I & Poster Session I (various rooms OICC 7F, 8F & 12F)

15:00-15:15 Break

### 15:15-16:45: Parallel Session II & Poster Session II (various rooms OICC 7F, 8F & 12F)

16:45-17:00: Break

### 17:00-17:45: ACP/ACERP Featured Presentation (OICC 12F Conference Hall)

Frank S. Ravitch, Michigan State University College of Law, USA

### 18:30-21:30: A Night Out in Osaka: Official Conference Dinner

The official conference dinner will be held in a downtown Osaka izakaya, and provides a relaxed and enjoyable environment to meet and network with other delegates. This is ticketed at 5,000 JPY and there are a limited number of places; pre-reservation is required. The party will leave the OICC 1F Lobby at 18:30, so please be there in good time. The venue is a 15 minute walk away. The conference dinner will begin at 19:00 at the venue and will finish at 21:00. Afterwards, a group will be lead back to the conference venue or you can continue the party with other delegates.





## Saturday, March 28, 2015

**9:00-10:30: Parallel Session I & Poster Session I (various rooms OICC 7F, 8F & 10F)**

10:30-10:45: Break

**10:45-12:45: Parallel Session II & Poster Session II (various rooms OICC 7F, 8F & 10F)**

12:45-13:30: Lunch Break

**12:45-13:30: Japanese Calligraphy Workshop**

Art students from Kyoto's Ritsumeikan University will run a workshop for delegates to try the ancient art of Japanese Calligraphy. All are welcome. No reservations are required. Participants will receive a calligraphy brush as a souvenir.

**13:30-15:00 Parallel Session III & Poster Session III (various rooms OICC 7F, 8F & 12F)**

15:00-15:15: Break

**15:15-16:45: Parallel Session IV & Poster Session IV (various rooms OICC 7F, 8F & 12F)**

16:45-17:00: Break

**17:00-17:45: ACP/ACERP Featured Presentation (OICC 10F - Room 1008)**

James W. McNally, University of Michigan, USA

## Sunday, March 29, 2015

**9:00-10:30: Parallel Session I & Poster Session I (various rooms OICC 7F, 8F & 10F)**

10:30-10:45: Break

**10:45-12:15: Parallel Session II (various rooms OICC 7F, 8F & 10F)**

12:15-13:00: Break

**13:00-14:30 Parallel Session III (various rooms OICC 7F, 8F & 10F)**

14:30-14:45: Break

**14:45-15:15 ACP/ACERP Sunday Featured Presentation (OICC 10F - Room 1008)**

Monty P. Satiadarma, Tarumanagara University, Indonesia

**15:15-15:40 ACP/ACERP 2015 Conference Closing Address (OICC 10F - Room 1008)**

Join us for closing remarks from Professor Stuart D. B. Picken, Chairman of IAFOR.

## Monday, March 30, 2015

**8:00-18:30 Post-Conference Tour of Kyoto**

This is ticketed at 12,000 JPY and is by advanced reservation only. For more information, please check with the Registration and Information Desk. If you are registered for the tour, please meet in the Rihga Royal Hotel lobby at 8:00 AM for a prompt 8:30 AM departure.





# Conference Map

## Floor Guide

### Rihga Royal Hotel (West Wing)

### Osaka International Convention Center (OICC)

15F		12F	[Conference Hall] [1203] [1204]
~		11F	Business Center [1101]
~		10F	[1008]
~		9F	
6F		8F	[801] [803] [804] [805] [806]
5F		7F	[701] [702]
4F		5F	Maido Okini Cafeteria
3F		3F	
2F		2F	OIC Cafe
1F	Remone Restaurant    Lobby    Reception	1F	Plaza Stage
B1F	Shops & Restaurants		
B2F	Shops & Restaurants		





## What to Wear & Bring

Attendees generally wear business casual attire. You may want to bring a light jacket or sweater as the temperature in meeting rooms is often difficult to control.

## Smoking

The Rihga Royal Hotel and Osaka International Convention Center have implemented a Clean Indoor Air Act; therefore, smoking is not permitted in any of the conference rooms. Please smoke only in designated areas.

## Internet Access

There will be a free WiFi internet connection throughout the conference areas. However, this can be unreliable and we would strongly suggest that you do not rely on a live connection for your presentation.

To access the WiFi the following accounts can be accessed:

In the Rihga Royal Hotel (1F, 2F): RIHGARoyal - password: 20145368

In the OICC: FREE-OICC - password: grandcube

For your convenience, there will also be a limited number of computers at the Conference Information Desk.

## Printing

There will be a printer at the Conference Information Desk, and we are able to offer a complimentary printing service of up to ten A4 sheets should you need this. Please be advised that printing may not be available at peak times. For additional printing needs the Osaka International Convention Center IIF Business Center offers a wide range of copy and printing services at reasonable prices.

## Badges

When you check in, you will receive a conference package, which includes your name badge. Wearing your badge is required for entrance to the sessions. If you lose your badge it can be replaced for a fee of JPY 5000. You must wear your badge at all times during the Conference.

If you are not wearing your badge, security may stop you and ask you to show your ID and evidence that you are registered. Those unable to show proof may be escorted from the Conference by security.

There are 4 colours of badges indicating the type of conference participant:

RED: Presenters and General Audience

YELLOW: Keynote and Featured Speakers

BLUE: Conference Exhibitors and Affiliates

BLACK: IAFOR Staff & Board Members

## Photo/Recording Waiver

There will be photography, audio and video recording at the conference. By entering the event premises you give consent to the use of your photograph, likeness or video or audio recording in whole or in part without restriction or limitation for any educational, promotional, or any purpose for distribution.

## Refreshment Breaks

Complimentary coffee, tea, and water will be available at the plenary session throughout Friday on the 12F, and Saturday & Sunday in Room 1008 (10F OICC). Light snacks will be provided once in the morning and once in the afternoon. Meals are not included in the conference registration fee, however, 10% discount vouchers for the following restaurants are available from the registration desk:

Chambord (French) - Rihga Royal Hotel Tower Wing 29F

Bella Costa (Italian) - Rihga Royal Hotel Annex 7F

Remone (Buffet) - Rihga Royal Hotel West Wing 1F

Royal Ryuho (Chinese) - Rihga Royal Hotel West Wing 15F

Naniwa (BBQ) - Rihga Royal Hotel B1F

Nakanoshima (Japanese) - Rihga Royal Hotel Tower Wing 30F

Meals can also be purchased at any of the restaurants in the Osaka International Convention Center (2F, 5F) or at restaurants or convenience stores in and around the local area.

## **Conference Welcome, Keynote Speaker & Featured Speaker Session: Friday 9:00-12:30**

The plenary session will be held on Friday morning, with the event beginning at 9:00 AM in the 12F Conference Hall of the Osaka International Convention Center (OICC). Please arrive in good time if you wish to attend the session. There will be an interval after the first keynote address and complimentary refreshments and snacks will be served. The plenary session will be followed by the official conference photograph. Please arrive in good time if you wish to attend the session.

## **Parallel Speaker Sessions**

Parallel Sessions will run from 13:30 on Friday afternoon, and from 9:00 AM on Saturday & Sunday morning. They are generally organized into streams. Sessions include two, three or sometimes four presenters. Each presenter has thirty minutes including Q and A time. The session length reflects the number of presenters.

## **Presentations and Equipment**

All rooms will be equipped with a MacBook computer pre-installed with PowerPoint and Keynote, as well as a screen and an LCD projector. If you wish, you may directly link your own PC laptop, although we advise you to use the computer provided by plugging in your USB flash drive.

We recommend that you bring two copies of your presentation in the case that one fails, and suggest sending yourself the presentation by email as a third and final precaution.

## **Session Chairs**

Session Chairs are expected to introduce themselves and other speakers (briefly), hand out presentation certificates at the end of the session, ensure that the session begins and ends on time, and that the time is divided fairly between the presentations. Each presenter should have no more than 30 minutes in which to present his or her paper, and respond to any questions.

The session chair is asked to assume this timekeeping role, and to this end, a yellow and red timekeeping card is used as a visual cue for presenters, letting them know when they have 5 minutes remaining, and when they must stop.

Please follow the order in the programme, and if for any reason a presenter fails to show, please keep to the original timeslots as delegates use the programme to plan their attendance.

## **Presentation Certificates**

Poster presenters can pick up a certificate of presentation from the Information Desk. All other presenters will receive a certificate of presentation from their session chair or a member of staff at the end of their session.

## **A Polite Request to All Participants**

Participants are requested to arrive in a timely fashion for all addresses, whether to their own, or to those of other presenters. Presenters are reminded that the time slots should be divided fairly and equally between the number of presentations, and that they should not overrun.

We recommend that the 30 minutes presentation timeslot be divided as follows: 20 minutes for the paper and 10 minutes for Q and A.

## **Poster Sessions & Poster Requirements**

The poster display boards are 1800mm high x 900mm wide. We are able to provide tape and pins. Please be aware that there are no on-site poster facilities for printing posters.

## **Conference Proceedings**

The Conference Proceedings are published on the IAFOR website ([www.iafor.org](http://www.iafor.org)), and can be freely accessed as part of the research archive.

All authors may have their full paper published in the online conference proceedings. Full text submission is due by April 29, 2015 through the online system. The proceedings will be published on May 29, 2015.

Authors will have PDF copies of their offprints emailed to them by the IAFOR office by June 29 2015.

## **Returning Delegate Discount**

Every year we have a growing number of delegates who have presented at previous IAFOR conferences. To show our appreciation IAFOR would now like to offer you a 10% discount off your next IAFOR conference registration. This offer is valid for the next 12 months and covers any IAFOR conference in Asia, Dubai, or Europe that you may choose to attend.



# conference guide



# JAPANESE CALLIGRAPHY WORKSHOP

Saturday, March 28

12:45-13:30

OICC 10F

Room 1008

Art students from Kyoto's Ritsumeikan University will run a workshop for delegates to try the ancient art of Japanese Calligraphy.

All are welcome. No reservations are required. Participants will receive a calligraphy brush as a souvenir.





# Conference Chairs, Keynotes & Featured Speakers





## Satoru Nishizawa

Yamanashi Prefectural University, Japan



**Satoru Nishizawa** is a Clinical Psychologist and Professor of Social Work at Yamanashi Prefectural University. He is a Chief Editor of the *Japanese Journal of Child and Neglect*, and a Board Member of several groups, including the Japanese Society for Prevention of Child Abuse and Neglect, the Center for child abuse Prevention, Tokyo, and the Association for Prevention of Child Abuse and Neglect, Osaka. He is also Professional Advisor for the Department of Family and Child Services, Tokyo Prefectural Government. He has published several books on Child Abuse, the most recent of which is *Challenge for Child Abuse: Toward an integrative approach*, published (in Japanese) in 2013. He was educated at Osaka University in Japan and San Francisco State University in the US.

### Keynote Presentation: Trauma and Attachment Focused Psychotherapy with Maltreated Children

Learning objectives:

1. Learning the techniques of trauma exposure for children.
2. Understanding the way to facilitate children's attachment toward their caregivers.
3. Reconsidering therapeutic meanings of regression in psychotherapy.

Abused and/or neglected children often show trauma and attachment related psychological and behavioral problems. They need help to recover from traumatic experiences and rebuild healthy attachment to their non-abusive caregivers. The Center for Child Abuse Prevention in Tokyo has provided trauma and attachment-focused psychotherapy for more than 80 maltreated children who are placed at residential facilities, foster homes, and adoptive families since 2005.

This therapy has some characteristics such as implementation of trauma exposure to children in co-joint sessions with their caregivers who provide "holding environments" and encourage children to confront their traumatic experiences. The hypothesis underlying this way of therapy is that the existence of caregivers would facilitate trauma exposure to children, which, in turn, would improve their attachment to caregivers who help them to expose their traumatic events such as abuse.

Many children showed post traumatic play, life story work, and care-related play in the course of the playtherapy. In this presentation, I will discuss the meanings of this play and effectiveness of trauma and attachment focused therapy with maltreated children. Also, I will refer to the therapeutic meanings of "regression" which has been observed in many children in the course of the treatment. Regression might have very important functions for the recovery from trauma and rebuilding appropriate attachment although it has been almost ignored in the Western literatures.

Keynote Presentation

Friday, March 27

09:15-10:00

OICC 12F

**Thomas Brian Mooney**  
Charles Darwin University, Australia



acp acerp 2015  
featured presenter

**Thomas Brian Mooney** is Professor of Philosophy and Head of School of Creative Arts and Humanities, Charles Darwin University.

His major research interests are in Moral Philosophy, Political Philosophy and Ancient Philosophy, and recent books include *Aquinas, Education and the East* (2014), *Understanding Teaching and Learning* (2012), *Meaning and Morality: Essays on the Philosophy of Julius Kovesi* (2013) and *Critical and Creative Thinking* (McGraw Hill: Forthcoming 2014).

Originally from the North of Ireland, he completed his BA and MA from The Queen's University, Belfast before moving to Australia to continue his doctoral work, being awarded his PhD in 1993 on the "Philosophy of Love and Friendship" at La Trobe University. Since then has taught at a number of Australian institutions including Melbourne University, Deakin University, Swinburne University, Edith Cowan University, and the University of Notre Dame. He has also taught at the University of Ghana, and prior to his current post, was at Singapore Management University.

**Featured Presentation: Powers of the Soul - A Very Different Theory of Justice**

Contemporary philosophical (as well as political, sociological and psychological) accounts of power focus on the exercise of power within given social conditions. From such perspectives power and its exercise, is largely a matter of external concern – the power of the media, the power of governments, of law, of politics and so on. However, certain writers in the ancient world of the West conceived of power and powers quite differently. They conceived of power as essentially located in virtues of the soul – internal power. While the Greeks were no strangers to the notion of external power (think of Thucydides' Melian Dialogues) they conceived of such external power as having its sources in the soul of individuals and collectives. In this paper I address some dimensions of the internal nature of power and provide some suggestions as to what a theory of justice might look like starting from this vantage point – a very different theory of justice than those prevalent in the contemporary world.

Featured Presentation

Friday, March 27

10:20-11:10

OICC 12F



# Mimi Bong

Brain and Motivation Research Institute - Korea University, South Korea



acp acerp 2015  
keynote presenter



**Mimi Bong** is Professor of Educational Psychology and the Associate Director of the Brain and Motivation Research Institute (bMRI) of Korea University. Bong has been studying motivation of adolescents in school settings and published over 60 articles and book chapters on related topics over the past 18 years. Her work appears in journals such as *Journal of Educational Psychology*, *Educational Psychologist*, *Educational Psychology Review*, and *Contemporary Educational Psychology*, among others.

Bong was recognized as the 8th most productive educational psychologist for the period of 1997-2001 and received the 'Richard E. Snow Award for Early Contributions in Educational Psychology' from the American Psychological Association/Division 15. She is the Associate Editor of *American Educational Research Journal* for the Teaching, Learning, and Human Development section and has served or currently serves on the editorial boards of *Child Development*, *Contemporary Educational Psychology*, *Educational Psychologist*, *Educational Psychology Review*, *Educational Researcher*, *Journal of Educational Psychology*, *Journal of Experimental Education*, and *Theory into Practice*.

## **Keynote Presentation: Context-Specific Motivational Beliefs - The Critical Determinants of Adolescent Learning and Self-Regulation**

In this presentation, I will argue for the importance of context-specific motivational beliefs in the self-regulation and academic performance of adolescent learners. Whereas the importance of context-specific motivation in academic learning and performance is well established in the literature, the ways with which these diverse motivational beliefs complement or interact with each other to facilitate or hinder self-regulation and achievement remain less clear. I will briefly describe how "context" is typically defined in educational and psychological research and then introduce representative constructs such as interest, self-efficacy, and achievement goals, whose context-specificity has been clearly demonstrated. Results from several empirical studies will then follow, which show that these constructs do interact with each other within specific contexts to produce different learning outcomes as well as mediate the effects of stable personality dispositions and contextual variations on students' learning processes and outcomes.

Keynote Presentation

Friday, March 27

11:10-12:00

OICC 12F

# Frank S. Ravitch

Michigan State University College of Law, USA



acp acerp 2015  
featured presenter  
& conference co-chair

**Frank S. Ravitch** is Professor of Law and the Walter H. Stowers Chair in Law and Religion at the Michigan State University College of Law, and Director of the Kyoto, Japan Summer Program. He is the author of several books: *Marketing Intelligent Design: Law And The Creationist Agenda* (Cambridge Univ. Press, 2011); *Masters Of Illusion: The Supreme Court And The Religion Clauses* (NYU Press 2007); *Law And Religion, A Reader: Cases, Concepts, And Theory*, 2nd Ed. (West 2008) (First Ed. 2004); *Employment Discrimination Law* (Prentice Hall 2005) (with Pamela Sumners and Janis McDonald); and *School Prayer And Discrimination: The Civil Rights Of Religious Minorities And Dissenters* (Northeastern University Press, 1999 & paperback edition 2001). Professor Ravitch has also published a number of law review articles addressing U.S. and Japanese constitutional law, law & religion, and civil rights law in leading journals. Moreover, he has written a number of amicus briefs addressing constitutional issues to the United States Supreme Court.

In 2001, Professor Ravitch was named a Fulbright Scholar and served on the Faculty of Law at Doshisha University in Kyoto, Japan. Currently, he directs the Michigan State University College of Law Japan Summer program. Professor Ravitch regularly serves as an expert for print and broadcast media, and speaks on topics related to U.S. Constitutional Law, Japanese Law, and Israeli Law to a wide range of national, international and local organizations. He speaks English, Japanese, and Hebrew.

## **Featured Presentation: Constitutional Revision in Japan: The Risks for Freedom of Religion and Freedom of Speech**

Prime Minister Shinzo Abe and some of his political allies have worked hard to begin a process of Constitutional Revision that endangers not only Japan's post war pacifist legacy, but also the fundamental freedoms of the Japanese people. Much of the attention has focused on Abe's attempts to amend Article 9, often referred to as the "Pacifist" provision of the Constitution. Many Japanese people and politicians have strongly opposed any change to Article 9, and it is safe to say that Abe vastly underestimated the resolve of the Japanese people on this issue. Yet, like a shell game, while people try to follow the fate of Article 9, other risks are missed. Once the Constitution is open to revision, freedom of speech, which has already reached a postwar low in recent years, and freedom of religion, may be at risk. I have argued elsewhere that Prime Minister's visits to the Yasukuni Shrine violate Articles 20 and 89 of the Japanese Constitution, but with Constitutional revision such visits might become ordinary and in fact, it would be possible for the government to fund these shrines to appease nationalists. In the last few years Japan has fallen to 59th in the world for freedom of the speech and the press according to Reporters Without Borders. It is far below every other major democratic country with similar economic status (and many non-democratic nations). With constitutional revision free speech and a free press may be further limited. Shadows of the Meiji Constitution, where personal freedoms were empty promises subsumed to state interests and nationalist fanaticism are rearing their heads. It is not just the risk to the Pacifist provision, which has already been all but ignored by the current administration, but to the Freedom of Speech and Religion that bring those shadows forward. It is up to the Japanese people to protect the freedoms they have come to value and which they have used in ways that benefit the entire world with Japanese creativity and insight.

**Featured Presentation**

**Friday, March 27**

**17:00-17:45**

**OICC 12F**





acp acerp 2015  
featured presenter



**James W. McNally** is the Director of the NACDA Program on Aging, a data archive containing over 1,500 studies related to health and the aging lifecourse. He currently does methodological research on the improvement and enhancement of secondary research data and has been cited as an expert authority on data imputation. McNally has directed the NACDA Program on Aging since 1998 and has seen the archive significantly increase its holdings with a growing collection of seminal studies on the aging lifecourse, health, retirement and international aspects of aging. He has spent much of his career addressing methodological issues with a specific focus on specialized application of incomplete or deficient data and the enhancement of secondary data for research applications. McNally has also worked extensively on issues related to international aging and changing perspectives on the role of family support in the later stages of the aging lifecourse.

**Featured Presentation: The Effects of Family Support on Depression Among Disabled Asian Elders in the United States - 2010-2014**

This analysis seeks to expand our understanding of ethnic variation in life satisfaction among elderly a household members who face a disabling condition that negatively impacts their health, particularly in regards to the US Asian context. With the introduction of oversampling among Asian households in the National Health Interview Survey we have a unique opportunity to look at ethnic differences in depression responses to health as well as examine the impact that household structure may moderate this outcome among disabled elders. This presentation will look at the risk of severe depression adults among Asian and non-Asian households dependent upon the respondents level of overall health and their access to family support as measured by household structure. We argue that the presence of immediate family support with the household should have a moderating impact on the risk of depression but that the presumed level of social acceptance of coresidence measured by ethnic variation should also result in measurable differences based upon household composition. As "filial responsibility" is often one of the characteristics ascribed to Asian cultures in the US as a component of the model minority stereotype this study seeks to add to a growing literature that looks at this stereotype using research that reflects actual variation within Asian families in relation to other racial groups within the US. Controlling for key variables including the health of the family members, age and race we measure ethnic variations in depression health among the elder household residents across various households compositions.

Featured Presentation

Saturday, March 28

17:00-17:45

OICC 10F (Room 1008)

# Monty Satiadarma

Tarumanagara University, Indonesia



acp acerp 2015  
featured presenter  
& conference co-chair

**Monty Satiadarma** is a clinical psychologist who has been teaching psychology at Tarumanagara University since 1994. He was one of the founders of the Department of Psychology at Tarumanagara, as well as the Dean of Psychology, Vice Rector and Rector of the university. He graduated with a degree in psychology from the University of Indonesia, art therapy from Emporia State, Kansas, family counselling from Notre Dame de Namur, California, and clinical hypnotherapy from Irvine, California. He is the co-chair of IAFOR's Asian Conference on Psychology and the Behavioral Sciences and has nationally published a number of books. Dr Satiadarma has a particular interest in educational psychology, and in music and art therapy, methods with which he treated survivors of the Indonesian tsunami on behalf of the International Red Cross and the United Nations. He is a board member and area chair of the International Council of Psychology, and a founder and board member of the Asian Psychology Association.

**Featured Presentation: The Lucifer Effect in Indonesian Educational Settings (Impact of Situational Attribution, Obedience and Modelling)**

Educators are supposed to transform knowledge and become models to their students. The word educator comes from *educare* (Latin) and they lead students to conduct behavior in accordance to their suggestions. In a number of ways teachers, educators, and leaders become the authorities to their students. In both formative childhood learning and transformative adult learning (Mezirow, 2003), people seek agreement and justifications based on interpersonal relations, doctrines and ideologies. Milgram's experiments (1963, 1974) explained in detail how people tend to obey authorities. Bandura (1977) in social learning theory has also explained how people imitate the behavior of their models. When leaders transform inappropriate knowledge and perform inappropriate behaviors, students will tend to imitate them in a form of obedience for being justified in accordance to the authorities. Zimbardo (1971), through his concept of the Lucifer Effect, explained how good people turn to becoming evil because of the environmental forces, the situational attribution, where people internalized their roles given by the authorities. Numbers of Indonesian educational concerns reported issues of charlatanism and hucksterisms (Pope & Vasquez, 1991) are being implemented along with the enforcement by the authorities. Various misconduct issues in Indonesian recent generation are related to the country's environmental power to enforce the behavior through modelling, obedience and social justifications. To reconstruct the mentality of the people may have to take years and decades. Educators primarily must initiate to take action on improving the behavior of the people in the society in order to avoid more Lucifer Effects in the future.

Featured Presentation

Sunday, March 29

14:45-15:15

OICC 10F (Room 1008)



# acp 2015 conference chairs & directors of programme



## Minoru Karasawa

ACP2015 Conference Co-Chair  
Nagoya University, Japan



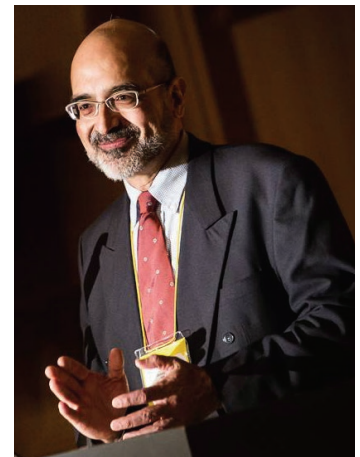
## Jiro Takai

ACP2015 Conference Co-Chair  
Nagoya University, Japan



## Dexter Da Silva

IAFOR International Director  
of Programme: Psychology  
Keisen University, Japan



**Minoru Karasawa** (left) received his Master's degree from Kyoto University and Ph.D. from the University of California, Los Angeles, both majoring in psychology. After teaching at Aichi Gakuin University and Kobe University, he has been at Nagoya University since 2006. Dr. Karasawa's primary research area has been social cognition, covering various issues such as social categorization, intergroup cognition and emotions, and the role of culture and language in social inferences. He is also heading a research project on the psychological mechanism underlying judgments of responsibility and punitive motives in legal contexts. He has been an Associate Editor of the Asian Journal of Social Psychology and the Editor of the Japanese Journal of Social Psychology. Academic associations that he has served as a board member include the Japanese Society of Social Psychology, the Japanese Group Dynamics Association, and the Japanese Society for Law and Psychology. He has been a member of the Science Council of Japan since 2006.

**Jiro Takai** (center) is professor of social psychology at Nagoya University, and received his PhD from the University of California, Santa Barbara. He has served in the executive committees of the Japan Society for Social Psychology, the Japan Group Dynamics Society, the Japan Intercultural Education Society, the Communication Association of Japan, and the Japan-US Communication Association (affiliate of National Communication Association). Although he was born in Japan, he spent 15 years as a youth growing up in Canada, and has also spent two years living in the United States. Because of such a background, he has an interest in cross-cultural matters, particularly in the context of interpersonal communication as well as research interests in interpersonal competence, self-presentation and Multi-faceted self concept.

**Dexter Da Silver** (right) is currently Professor of Educational Psychology at Keisen University in Tokyo. He has taught EFL at junior high school, language schools, and universities in Sydney, and for the past two decades has been living and teaching at the tertiary level in Japan. Professor Da Silva was educated at the University of Sydney (BA, Dip. Ed., M.A.), and the University of Western Sydney (Ph.D.) He has presented and co-presented at conferences in Asia, Australia, Europe and the U.S., and written or co-written articles and book chapters on education-related topics, such as trust, student motivation, autonomy, and content-based language teaching. He is a past editor and current associate editor of On CUE Journal, regular reviewer for conferences and proceedings, and recent co-chair of the 2011 CUE Conference on Motivation.

# INTERNATIONAL INTERCULTURAL INTERDISCIPLINARY

## iafor

“To Open Minds, To Educate Intelligence, To Inform Decisions”

The International Academic Forum provides new perspectives to the thought-leaders and decision-makers of today and tomorrow by offering constructive environments for dialogue and interchange at the intersections of nation, culture, and discipline. Headquartered in Nagoya, Japan, and registered as a Non-Profit Organization (一般社団法人), IAFOR is an independent think tank committed to the deeper understanding of contemporary geo-political transformation, particularly in the Asia Pacific Region.

For more information about the International Academic Forum and its activities,  
please visit our website at [www.iafor.org](http://www.iafor.org)

Hear the latest news and developments by joining our mailing list.  
Find us on facebook at IAFORJapan or follow us on twitter @iafor

**IAFOR**  
**The International Academic Forum**  
**Academic Vision and Mission**

“To Open Minds, To Educate Intelligence, To Inform Decisions”

The vision of IAFOR grew out of the perceived need to fill a vacuum in the communication and exchange activities of the academic world. Its mission arose out of examining that space and investigating why it existed. The vacuum existed because of the lack of opportunity for serious and thoughtful exchange between academics, members of the global business community, and practitioners in the fields of human endeavor that linked these groups together. In the field of education, for example, we have academic theorists, educational managers (political decision-makers and organizational directors) and classroom teachers with their support staff in IT, library work, exchange programs, and specialist fields. But how often do they have the opportunity to interact?

Moving beyond one particular field, larger questions arise. What function should universities prioritize in the 21st century? What do businesses see as their contribution to social and global well being? How can people on the ground, trying to implement improvements that will transform human life, best be supported? And perhaps above all, what are the agendas that will drive mechanisms to enable these groups to interact effectively.

One piece of distilled thought that came from early exchanges at one of our conferences was the recognition that some of the rhetoric of concern about the problems of developing nations was perhaps over-focused on the term “poverty” because it can be defined only in a relative way. “Hunger” was put forward as being more immediate and itself a contributory factor to poverty, rather than the other way round. One key to the hunger issue could be the provision of safe drinking water; or water for irrigation in some contexts, while flood management might be necessary elsewhere. These, in and by themselves become valuable only insofar as they help to relieve hunger in specific contexts.

IAFOR is affording opportunities that do not exist elsewhere. The base is Osaka, Japan’s great commercial and manufacturing hub, one symbol of the emerging Pacific economy that is already eclipsing the long dominant Atlantic zone. Our conferences present those taking part with three unique dimensions of experience. First of all, it encourages interdisciplinary activity to be expanded. Depending on the field, this can face varying degrees of difficulty, ranging from discouragement to downright prohibition. Those overly dependent on fixed academic structures often see lateral thinking as a threat. None of these negatives apply in IAFOR. Its purpose is to generate new approaches that cross any disciplinary lines. The principle employed is to let the imagination permit intuitive responses to questions. There are no panels of critics. There are simply people who want to listen and reflect. The model of academic work as potholing is replaced by the metaphor of mountaineering. While respecting the need for solid and well-founded academic work, we feel the need to go beyond it from time to time to discover fresh approaches to old questions.

Secondly, it facilitates the heightening of intercultural awareness. Again, we encourage innovation through cross-cultural perception. Cultural roots influence people in their attitudes more than most would realize or admit. The need to see and internalize insights gained from other viewpoints is met by a process of steady illumination.

Thirdly, it promotes the broadening of international exchange. We may live in a globalized world, but in reality parochialism still holds sway. The collapse of the U.S.S.R and the break-up of Yugoslavia led to the re-establishment of numerous former countries. While this may be desirable for the peoples concerned, it merely adds to the world’s cultural confusion. Exchange leads to explanation and that helps the growth of intercultural awareness.

IAFOR makes all of these developments possible in one gathering. Our conferences are not a substitute for specialist conferences. We intend our events to be an alternative that functions as a balance or even a corrective to the extreme tendencies that can arise from more narrowly defined research parameters. In short, IAFOR is promoting and facilitating a new multifaceted approach to one of the core issues of our time, namely globalization and its many forms of growth and expansion. Awareness of how it cuts across the worlds of business, and academia, along with its impact on societies and institutions is one of the driving forces that has given the organization its momentum, and is making it a pioneer in this global age.

Rev. Professor Stuart DB Picken  
Order of the Sacred Treasure (瑞宝中綬章), M.A. (Hons), BD., Ph.D., F.R.A.S.  
Chairman, Japan Society of Scotland  
Chairman, IAFOR International Advisory Board

Dr Joseph Haldane  
B.A. (Hons), Ph.D F.R.S.A., F.R.A.S.  
President, IAFOR



## Chairman of the International Advisory Board

The Reverend Professor Stuart D. B. Picken

Order of the Sacred Treasure,

M.A. (Hons), B.D., Ph.D. (Glasgow), F.R.A.S.



**Stuart D. B. Picken** is the Chairman of the International Advisory Board, and in this role is Chairman of the Organization. As Chairman of IAFOR, Professor Picken helps guide the academic and political strategy of the organization, and assists in the forging of global institutional partnerships. He is also responsible for the development of the IAFOR Research Institutes.

The author of a dozen books and over 130 articles and papers, Professor Picken is considered one of the foremost scholars on Japan, China, and Globalization in East Asia. As an academic, Professor Picken has devoted more than 30 years to scholarship in Japan, notably as a Professor of Philosophy at the International Christian University in Tokyo, where he specialized in ethics and Japanese thought, and as International Adviser to the High Priest of Tsubaki Grand Shrine (Mie prefecture). He has also served as a consultant to various businesses, including Jun Ashida Ltd., Mitsui Mining & Smelting Corp., Kobe Steel, and Japan Air Lines.

In November 2008, the Government of Japan awarded Professor Picken the Order of the Sacred Treasure for his pioneering research, and outstanding contribution to the promotion of friendship and mutual understanding between Japan and the UK. The honour is normally reserved for Japanese citizens and is a mark of the utmost respect in which Professor Picken is held by the Japanese Government. More recently, in 2012 he was invited to London to attend a reception at the Japanese Embassy, hosted by Emperor Akihito and Empress Michiko as an expression of their gratitude towards Britons who had helped support Japan after the 2011 Tohoku earthquake and tsunami. Professor Picken helped organize fundraising efforts through both the Japan Society of Scotland, of which he is the chair, in the UK, and IAFOR in Japan.

Although now resident in Scotland, Professor Picken divides his time between the UK and Japan. He is also Chair of the Japan Society of Scotland, the Chairman of the Academic Board of New College, Birmingham. He lives near Glasgow with his wife and two children.

## President

Dr Joseph Haldane

B.A., Ph.D. (London), F.R.S.A., F.R.A.S.



**Joseph Haldane** is the President of the International Academic Forum. He was Academic Director from IAFOR's inception in 2009 until January 2011, and Executive Director from 2011 until late 2014, when he assumed his current role. He is responsible for devising strategy, setting policies, forging institutional partnerships, implementing projects, and overseeing the organization's business and academic operations, including research, publications and events.

Dr Haldane's academic interests include politics and international affairs, literature and history, and he holds a PhD from the University of London in 19th century French Studies. He began his academic career in France, and from 2002-2005 held full-time faculty positions at the University of Paris XII (Paris-Est Créteil) and Sciences Po Paris, as well as visiting positions at both the French Press Institute in the University of Paris II (Université Panthéon-Assas), and the School of Journalism at Sciences Po Paris. Prior to founding IAFOR in 2009, Dr Haldane was an Associate Professor at Nagoya University of Commerce and Business in Japan, where he taught a range of language and culture courses at undergraduate level, and the MBA Ethics course in the graduate school.

Dr Haldane's current research concentrates on post-war Japanese and Chinese history, as well as Sino-Japanese and US-Japan relations in the same period. In 2012 he was elected a Fellow of the Royal Asiatic Society, and in 2015 a Fellow of the Royal Society of Arts.

# people - The Executive Council of the International Advisory Board

## IAB Chair: Professor Stuart D.B. Picken

The IAB Executive Council is composed of distinguished academics, business executives, former and current government officials, and community leaders of international standing. Its role is to provide counsel and direction in the business and affairs of IAFOR, suggest and approve the areas of scholarly investigation, and safeguard the independence of the Forum's work. International Directors of Program and Research Institute Directors are ex-officio members of the Executive Council of the International Advisory Board. Membership of the Executive Council of the International Advisory Board is by invitation only.

### Mr Mitsumasa Aoyama

Director; The Yufuku Gallery, Tokyo, Japan

### Professor David N Aspin

Professor Emeritus and Former Dean of the Faculty of Education, Monash University, Australia  
Visiting Fellow, St Edmund's College, Cambridge University, UK

### Professor Don Brash

Former Governor of the Reserve Bank, New Zealand  
Former Leader of the New National Party, New Zealand  
Adjunct Professor, AUT, New Zealand & La Trobe University, Australia

### Lord Charles Bruce

Patron, Japan Society of Scotland  
Patron, Scottish Centre of Tagore Studies at Edinburgh Napier University  
Chairman, Kolkata Scottish Heritage Trust

### Professor Judith Chapman

Professor of Education, Australian Catholic University, Australia  
Visiting Fellow, St Edmund's College, Cambridge University, UK  
Member of the Order of Australia

### Professor Tien-Hui Chiang

Professor and Chair, Department of Education  
National University of Tainan, Taiwan/Chinese Taipei

### Professor Chung-Ying Cheng

Professor of Philosophy, University of Hawai'i at Manoa, USA  
Editor-in-Chief, The Journal of Chinese Philosophy

### Professor Steve Cornwell

Professor of English and Interdisciplinary Studies,  
Osaka Jogakuin University, Osaka, Japan  
Osaka Local Conference Chair

### Professor Michael A. Cusumano

SMR Distinguished Professor of Management and Engineering Systems, MIT Sloan School of Management, Massachusetts Institute of Technology, USA

### Professor Dexter Da Silva

Professor of Educational Psychology, Keisen University, Tokyo, Japan

### Professor Georges Depeyrot

Professor and Director of Research & Member of the Board of Trustees  
French National Center for Scientific Research (CNRS) & L'Ecole Normale Supérieure, Paris, France

### Professor Donald E. Hall

Herbert J. and Ann L. Siegel Dean  
Lehigh University, USA

### Professor June Henton

Dean, College of Human Sciences, Auburn University, USA

### Professor Michael Hudson

President of The Institute for the Study of Long-Term Economic Trends (ISLET)  
Distinguished Research Professor of Economics, The University of Missouri, Kansas City

### Professor Koichi Iwabuchi

Professor of Media and Cultural Studies & Director of the Monash Asia Institute, Monash University, Australia

### Professor Sue Jackson

Professor of Lifelong Learning and Gender & Pro-Vice Master of Teaching and Learning, Birkbeck, University of London, UK

### Professor Sing Kong Lee

Director; The National Institute of Education, Singapore

### Professor Sir Geoffrey Lloyd

Senior Scholar in Residence, The Needham Research Institute, Cambridge, UK  
Fellow and Former Master; Darwin College, University of Cambridge  
Fellow of the British Academy

### Professor Keith Miller

Orthwein Endowed Professor for Lifelong Learning in the Science, University of Missouri-St. Louis, USA

### Professor Kuniko Miyanaga

Director; Human Potential Institute, Japan  
Fellow, Reischauer Institute, Harvard University, USA

### Professor Dennis McInerney

Chair Professor of Educational Psychology and Co-Director of the Assessment Research Centre  
The Hong Kong Institute of Education, Hong Kong

### Professor Johannes Moenius

The University of Redlands School of Business, USA

### Professor Ka Ho Joshua Mok

Chair Professor of Comparative Policy, Associate Vice-President (External Relations)  
Dean of the Faculty of Arts and Sciences, The Hong Kong Institute of Education, Hong Kong SAR

### Professor Michiko Nakano

Professor of English & Director of the Distance Learning Center, Waseda University, Tokyo, Japan

### Ms Linda Toyo Obayashi

Senior Mediation Officer; The World Bank Group  
Washington DC, USA

### Professor Baden Offord

Director and Chair;  
Centre for Human Rights Education  
Curtin University, Australia

### Professor Jerry Platt

Professor of Global Communication, Akita International University, Japan  
Professor Emeritus, San Francisco State University, USA

### Professor Frank S. Ravitch

Professor of Law & Walter H. Stowers Chair in Law and Religion, Michigan State University College of Law

### Professor Richard Roth

Senior Associate Dean, Medill School of Journalism, Northwestern University, Qatar

### Professor Monty P. Satiadarma

Clinical Psychologist and Lecturer in Psychology & Former Dean of the Department of Psychology and Rector of the University, Tarumanagara University, Indonesia

### Mr Mohamed Salaheen

Director; The United Nations World Food Programme, Japan & Korea

### Mr Lowell Sheppard

Asia Pacific Director; HOPE International Development Agency, Canada/Japan

### His Excellency Dr Drago Stambuk

Croatian Ambassador to Brazil, Brazil

### Professor Mary Stuart

Vice-Chancellor; The University of Lincoln, UK

### Professor Arthur Stockwin, OBE ORS

University of Oxford, UK

### Professor Gary Swanson

Distinguished Journalist-in-Residence & Mildred S. Hansen Endowed Chair; The University of Northern Colorado, USA

### Professor Jiro Takai

Secretary General of the Asian Association for Social Psychology & Professor of Social Psychology  
Graduate School of Education and Human Development, Nagoya University, Japan

### Professor Svetlana Ter Minasova

President of the Faculty of Foreign Languages and Area Studies, Lomonosov Moscow State University

### Professor Yozo Yokota

Director of the Center for Human Rights Affairs, Japan  
Former UN Special Rapporteur on Myanmar

### Professor Kensaku Yoshida

Professor of English & Director of the Center for the Teaching of Foreign Languages in General Education, Sophia University, Tokyo, Japan

The International Advisory Board is composed of distinguished academics, business executives, former and current government officials, and community leaders. Its role is to consult and provide counsel on the business and affairs of IAFOR, and suggest areas of scholarly investigation. Membership of the International Advisory Board is by invitation only. For a full list please see the IAFOR website.

## The Japan Liaison Committee (JLC)

The Japan Liaison Committee is a consultative committee that provides support in the form of advice and guidance in specific aspects of the planning and projects of the Forum held in Japan. The Chairman of the International Advisory Board is also chair of the JLC. Members of the JLC are ex-officio members of the International Advisory Board.

Prof Stuart D. B. Picken, Chairman, IAFOR IAB (chair)

Mr Mitsumasa Aoyama, Founder of the PHP Institute, Kyoto, Japan & Director; the Yufuku Gallery, Tokyo, Japan

Prof Kuniko Miyanaga, Director; the Human Potential Institute, Tokyo, Japan and Fellow, Reischauer Institute, Harvard University, USA

Prof Michiko Nakano, Professor & Director of the Distance Learning Center; Waseda University, Tokyo, Japan

Prof Yozo Yokota, Director of the Center for Human Rights Affairs, Japan & Former UN Special Rapporteur on Myanmar

Dr Joseph Haldane, Executive Director; IAFOR

# people - IAFOR Journal Editors

Editors of IAFOR Journals are ex-officio Members of the International Advisory Board

IAFOR Journal of Arts and Humanities

**Dr Thomas French**, Ritsumeikan University, Japan

IAFOR Journal of Literature & Librarianship

**Dr Richard Donovan**, Doshisha University, Japan

IAFOR Journal of Education

**Dr Bernard Montoneri**, Providence University, Taichung, Taiwan

IAFOR Journal of Business and Management

**Dr Merlin Levirs**, Ritsumeikan University

IAFOR Journal of the Social Sciences

**Dr Andrea Molle**, Chapman University, USA

IAFOR Journal of Ethics, Religion and Philosophy

**Dr Michael O'Sullivan**, The Chinese University of Hong Kong, Hong Kong SAR

IAFOR Journal of Sustainability, Energy and the Environment

**Dr Alexandru-Ionut Petrisor**, The National Institute for Research and Development in Construction, Urban Planning and Sustainable Spatial Development (URBAN=INCERC), Romania

IAFOR Journal of Media, Communication & Film

**Dr James Rowllins**, Singapore University of Design and Technology

IAFOR Journal of Asian Studies

**Dr Seiko Yasumoto**, The University of Sydney, Australia

IAFOR Journal of Language Learning

**Dr. Ebru Melek Koc**, Izmir Institute of Technology, Turkey

IAFOR Journal of Politics, Economics & Law

**Dr Craig Mark**, Kwansei Gakuin University, Japan

IAFOR Journal of Cultural Studies

**Professor Holger Briel**, Xi'an Jiaotong-Liverpool University, China

IAFOR Journal of Psychology and the Behavioral Sciences

**Dr. Shahrokh (Sharo) Shafaie**, Southeast Missouri State University, USA

**Dr. Deborah G. Wooldridge**, Professor and School Director, Bowling Green State University, USA

## people - IAFOR Key Staff



### Mr Kiyoshi Mana - Director of Operations

Kiyoshi Mana is the Director of Operations, and is responsible for overseeing the operations of the organisation, including IAFOR's conferences in Asia, Europe, North America and the Middle East. An American of Japanese descent, Kiyoshi has long been fascinated by the country of his ancestors, studying both Japanese language and culture at San Francisco State.



### Mr Alexander Pratt - Deputy Director of Operations

A civil engineering graduate from the University of Nottingham, Alex first came to Japan in 1997. Previous to joining IAFOR, in 2013, Alex held positions in education management, information services, and international relations. At IAFOR Alex helps oversee the general administration and operation of the organization and works alongside the Director of Operations to expand IAFOR's events in Japan and internationally.



### Mr Michael Kedzlie - Research and Policy Manager

Michael Liam Kedzlie is a New Zealander who currently works as the Research and Policy Manager. He is responsible for formulating legal policy as well as liaising with the organisation's university partners and the International Directors of Program. He is also editor of Eye Magazine. He has a Master's degree in Education from Massey University as well as a Law degree from the University of Waikato Law School. He is an enrolled Barrister and Solicitor of the High Court of New Zealand.



### Ms Mai Hasuno - Events, Marketing and Domestic Relations Manager

Mai oversees the organisation's conferences in Japan, and is responsible for developing and implementing IAFOR's marketing strategy within Japan. She also acts as special assistant to the President and the IAB Chairman in the administration of the Japan International Liaison Committee. Previous to joining IAFOR, Mai worked for the Aioi Nissay Dowa Insurance Corporation.



### Mr Thaddeus Pope - Media and Design Manager

Born and raised in Brighton, UK, Thaddeus is an experienced commercial and editorial photographer with a BA in Photography from the London College of Communication (University of the Arts London). Thaddeus's duties at IAFOR include overseeing the design and media output of the organisation, as well as producing photo-essays, short documentaries and other visual content for IAFOR and its publications, including Eye Magazine. He is also the Creative Director of the IAFOR Documentary Photography Award.



### Mr Bryce Platt - Technology Manager

After growing up in the Silicon Valley in California, Bryce graduated from Gustavus Adolphus College (Saint Peter, Minnesota) with a degree in sociology, and in 2013 earned a Master's degree in Global Communication from Akita International University in Japan. As well as coordinating IAFOR's technology strategy, he is also responsible for managing systems operations, and exploring technological solutions for the organization.



### Mr David George - Coordinator: Events and Marketing

Raised in Brisbane, Australia, Dave graduated from the University of Queensland with a Bachelor of Arts specialised in Psychology. Dave has a background in project based media and public relations work with experience at events in Australia, India, Singapore and Dubai.



### Mr Takumi Saito - Coordinator: Finance and Administration

Born and raised in Yamagata, Japan, Takumi studied English literature at Waseda University. A language lover, he has also studied German, Spanish, French and Polish and can also speak Italian. Takumi recently joined IAFOR to handle its finance and administration.



### Ms Lindsay Lafreniere - Coordinator: Publications and Communications

Originally from Canada, Lindsay Lafreniere came to Japan in 2012. She holds a Bachelor of Arts degree in Psychology and English and a graduate diploma in Journalism. Lindsay brings her experience of media, publishing, and broadcast work in Canada to IAFOR.



### Mr Shawn Mahler - Coordinator: Video and Media

Los Angeles native Shawn Mahler has a wealth of experience working on film, video, and theater productions in the United States and Japan. He holds a Bachelor of Arts in Film Theory and Production from the University of California, Irvine. Shawn has spent over ten years in Japan where he has worked with numerous industry professionals to develop television shows, movies, and theatrical productions.



# The IAFOR YouTube Channel

New videos uploaded weekly featuring interviews and presentations with IAFOR Speakers from our conferences in Asia, North America Europe and Dubai.

*Prof. Svetlana Ter-Minasova*

*President of the Faculty of Foreign Languages and Area Studies*

*Lomonosov Moscow State University*

Subscribe at  
[iafor.org/youtube](http://iafor.org/youtube)



iafor



# iafor conference highlights: the past 12 months

global  
thought  
leaders

Since 2009, IAFOR has welcomed university presidents, faculty deans, award-winning journalists, national politicians, government ministers, diplomats, charity leaders, think tank directors, documentary makers, movie directors, members of the armed forces, lawyers, doctors, jurists, artists, poets, writers, clergy, scientists, philosophers...





**Top left:** Dennis McInerney, Chair Professor of Educational Psychology at the Hong Kong Institute of Education delivers a keynote on the concept of identity at the Asian Conference on Education 2014. **Top right:** Professor Keith Miller of the University of Missouri, and former Editor of the IEEE Technology and Society magazine, speaks of the concept of identity and machines in his complementary keynote at the Asian Conference on Society, Education and Technology.

**Above left:** Dr. Christine Coombe of Dubai Men's College (UAE) and former TESOL President, delivers a keynote at the IAFOR International Conference on Education on "Best Practice in ELT: 10 Traits of a Highly Effective Teacher". **Above right:** Pulitzer nominated journalism professor at Medill, Richard Roth; Former Wall Street Journal and Washington Post investigative reporter and Director of the Medill Justice Project, Professor Alec Klein sit on a Media and Justice panel at MediAsia 2014. The panel was chaired by Multi-Emmy award winning producer, Professor Gary E. Swanson.

**Below Left:** Arizona University Centennial Professor of Public Management and Technology Policy, Barry Bozeman, delivers a keynote at the Asian Conference on Business and Public Policy on "Enhancing Research Collaboration Effectiveness". **Below Center:** Professor of intercultural studies and translation at the American University of Sharjah (UAE), Said M. Faig, delivers a featured presentation at the IAFOR International Conference on Education on "Intercultural Encounters, in the Eye of the Beholder". **Below Right:** Dr Andrew Staples, Director of the Economist Corporate Network for Japan, delivers a featured address on "Megatrends, Japan and the Innovation Challenge" at the Asian Conference on Society, Information and Technology 2014.







**Top left: Professor Georges Depeyrot**, monetary historian at the French National Center for Scientific Research, introduces the DAMIN Program at the Asian Conference on Arts and Humanities (ACAH) and the Asian Conference on Literature and Librarianship (LibrAsia) 2014. **Top right: Paul Lowe**, University of the Arts London, addresses ACAH/LibrAsia 2014 with his featured speech, "Testimony of Light: Using Photography to Bear Witness to Genocide in the Former Yugoslavia"

**Above left: Featured Speaker Professor Donald E. Hall**, Dean of the College of Arts and Sciences at Lehigh University, USA, presents at ACCS/ACAS2014: "Looking Beyond Our Horizons: Interdisciplinary Education as Our Best Hope for the Future." **Above right: His Excellency Dr Lars Vargö**, Ambassador of Sweden, announcing the winners of the 4th Vladimir Devidé Haiku Award at ACAH/LibrAsia 2014.

**Below left: Professor Bill Ashcroft**, University of New South Wales, Australia and author of "The Empire Writes back", delivers his ACAH/LibrAsia 2014 keynote speech "Revolution, Transformation and Utopia: the Function of Literature". **Below center: Professor Koichi Iwabuchi**, Director of Monash University's Asian Institute, Australia, delivers his Keynote Speech at ACAS/ACCS 2014, "On the Predicament of the Borderland Imagination". **Below right: Dr John Hope**, Dean of International Relations from the University of Auckland, New Zealand, delivers his keynote address at ACTC2014 titled "Improving School/Home Communication With Online Blogs".







**Top left:** Professor Arthur J.A. Stockwin from the University of Oxford, UK (left) and Jun Arima, Director General of JETRO London (right) discuss the emerging defence and international relations posture of Japan at the 2014 European Conference Series. **Top right:** Professor Baden Offord, Professor of Cultural Studies and Human Rights at Southern Cross University, Australia, and Vice-President of the Cultural Studies Association of Australasia, addresses delegates at the ACAS/ACCS 2014 closing session.

**Above left:** Dr Amy Szarkowski (Harvard Medical School, USA) & Dr Yukinori Komine (Harvard University, USA), address the Asian Conference on the Social Sciences and the Asian Conference on Sustainability, Energy & the Environment (ACSS/ACSEE2014) plenary session with "Conceptualizing Soft Power in the U.S.: Decision to Implement the Convention on the Rights of Persons with Disabilities". **Above right:** Lowell Sheppard, Asia Pacific Director of the HOPE International Development Agency, presents his powerful featured speech, "Individual, Community and Society: Conflict, Resolution and Synergy" at the ACSS/ACSEE 2014 plenary session.

**Below left:** Conference Chair Professor Sue Jackson, Professor of Lifelong Learning and Gender & Pro-Vice Master of Teaching and Learning, Birkbeck, University of London, welcomes delegates to the European Conference on Education 2014 (ECE2014). **Bottom centre:** Professor Heidi Safia Mirza from Goldsmiths College, University of London, during her keynote address at ECE2014. Professor Mirza spoke on "Decolonizing Pedagogies: Black feminist reflections on teaching race, faith and culture in higher education". **Bottom right:** Professor Penny Jane Burke, Roehampton University, London, speaking during the plenary session of ECE2014 on "Transforming Pedagogical Spaces: Knowledge, Becoming and Belonging."







**Top left:** Lord Charles Bruce, the keynote speaker at the European Conference on Arts and Humanities 2014 (ECAH2014), during his address "In Between The Occident And The Orient," traced the encounters of Europeans and Asians during the colonial period. **Top right:** Professor Joe Elliott from Durham University, UK, presents his featured speech, "The Dyslexia Debate" at the European Conference on Psychology and Behavioral Sciences 2014. Professor Elliott outlined the nature of the dyslexia debate and called for an end to the use of the dyslexia label.

**Above left:** ECLL2014 Keynote speaker Ken Wilson, prominent ELT author and trainer, during his featured speech "Motivating the unmotivated - Ten ways to get your students to DO something." **Above right:** Professor Michael A. Cusumano, the Sloan Management Review Distinguished Professor of Management at the Massachusetts Institute of Technology, addresses the North American Conference on the Social Sciences (NACSS2014) on the topic of "Japanese Firms and Staying Power".

**Below left:** Professor Yuriko Saito, from the Rhode Island School of Design, speaks during the North American Conference on Media, Film, and Cultural Studies (NACMFCS2014) plenary session on "Everyday Aesthetics and World-Making". **Bottom centre:** Linda Toyo Obayashi, the Senior Mediation Officer at The World Bank Group's Internal Justice System speaks at NACSS2014 on the topic of conflict resolution in the workplace. **Bottom right:** Professor Svetlana Ter Minasova, President of Moscow State University, during her keynote presentation, "The Influence of National Classical Literature on Moulding National Identity," discussed to what extent national classical literature can be regarded as a source and a pivot of national identity.





The International Academic Forum's Journals conform to the highest academic standards of international peer review, and are published in accordance with the IAFOR publishing commitment to make all of our published materials available online.

### Journals FAQ

#### How are journal editors appointed?

Journal Editors are appointed by the International Academic Forum's leadership, under the guidance of the Chairman of the International Advisory Board. The term of appointment is for one issue, to be renewed by mutual consent.

#### How do we ensure academic integrity?

Once appointed, the editor is free to appoint his or her own editorial team and advisory members. All papers published in the journal have been subjected to the rigorous and accepted processes of academic peer review. Neither editors nor members of the editorial team are remunerated for their work. Authors will never be asked to "contribute" towards publication costs.

#### How are papers selected?

Journal Editors may accept papers through an open call, and proposed articles may be sent directly to the respective editors. A small number of papers from the associated IAFOR conference proceedings may also be selected by the journal editor(s) for reworking and revising subject to normal processes of review. It is expected that between 5 and 10 percent of papers included in any given conference proceedings will be developed for inclusion in the associated conference journal.

#### How are IAFOR Journals related to IAFOR conferences?

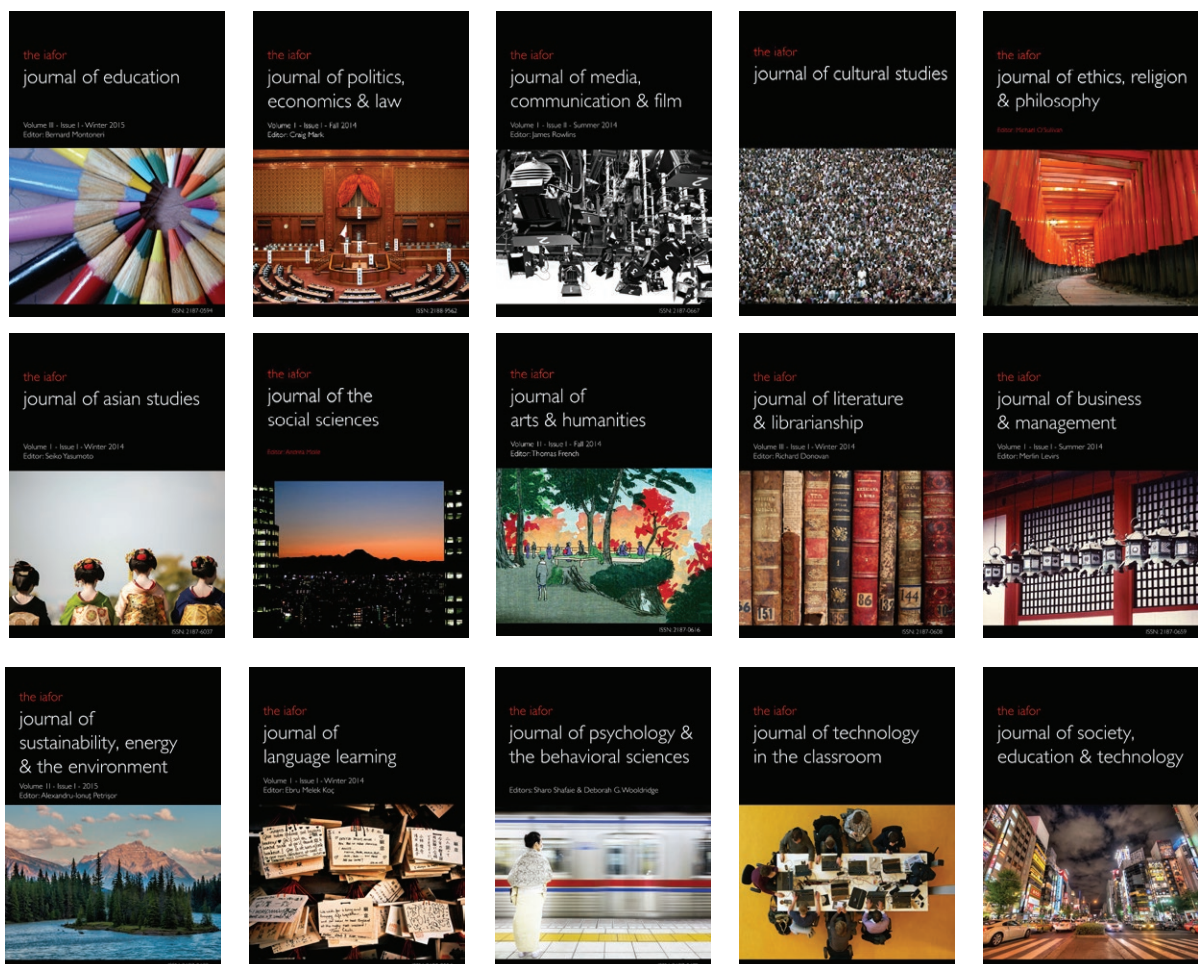
IAFOR's journals reflect the interdisciplinary and international nature of our conferences and are organized thematically. Papers included in the associated conference proceedings may be considered for reworking by the editor(s), and would then be subjected to the same processes of peer review as papers submitted by other means.

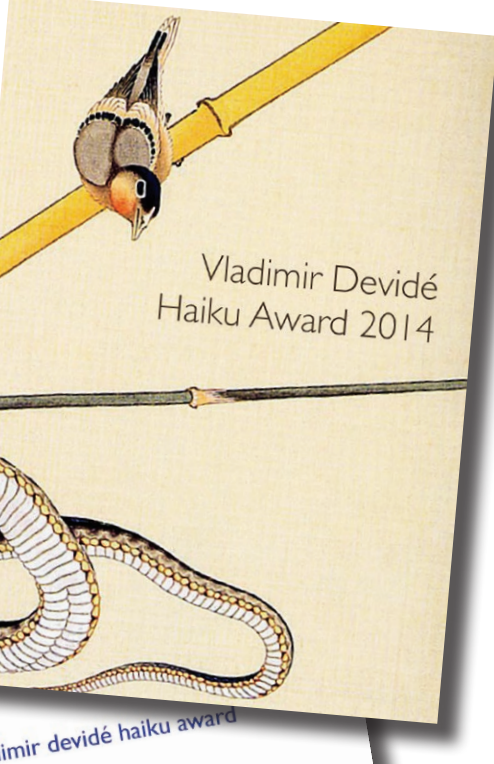
Visit the IAFOR website for further information - [www.iafor.org/journals](http://www.iafor.org/journals)

IAFOR is committed to providing ALL of its publications in online form for no fee.

Researchers and scholars, regardless of institutional affiliation and status, can access our academic journals, monographs, magazine, conference materials and special publications for no charge, wherever there is internet access.

IAFOR will never ask authors to contribute towards publication costs, or engage in other such publishing practices which we believe undermine academic independence and integrity.





imir devidé haiku award



selected haiku 2013



### IAFOR Keynotes

The IAFOR Keynotes Series is a collection of keynote addresses, or associated papers given at our conferences. Presented as a part of the open research archive, the Keynotes series provides an example of the range and quality of speakers at IAFOR events. These keynotes are lightly reworked, and contain references, but are otherwise true to the original address. Many can also be seen in video format on our YouTube page. Whether you were present at the conference or not, the keynotes are thoughtful addresses by senior academics, the content of which may help your research.

### Special Series & Monographs

The International Academic Forum is publishing a number of special monographs in print and online form. One such publication is a selection of haiku from the Annual Vladimir Devidé Haiku Award.

### Eye Magazine

Through Eye Magazine, the International Academic Forum's own in-house e-magazine publication, we hope to enlighten you to various views and opinions of our contributors, many of whom have presented full research papers at our various conferences.

The Winter/Spring 2015 of Eye magazine has several articles that focus on human rights & justice, as well as some other great articles, op-eds and essays.

Eye Magazine is available on the IAFOR website ([iafor.org/eye](http://iafor.org/eye)) and through the ISSUU reader on your browser or mobile device.









# Friday

# 金曜日



Friday Morning Events

08:00 - 09:00  
Conference Registration

09:00 - 09:15  
Welcome Address  
8F OICC

09:15 - 10:00  
Keynote Presentation: Satoru Nishizawa  
12F OICC

10:00 - 10:20  
Coffee Break

10:20 - 11:10  
Featured Presentation: Thomas Brian Mooney  
12F OICC

11:10 - 12:00  
Keynote Presentation: Mimi Bong  
12F OICC

12:00 - 12:30  
Taiko Drum Performance by Akutagawa High School  
followed by  
Official Conference Photograph  
12F OICC

12:30 - 13:30  
Lunch Break



F  
r  
i  
d  
a  
y

Friday Session I: 13:30 - 15:00

Friday Session I: 13:30 - 15:00

Room: 801

ACP - Community Development

Session Chair: Heather Renee Barker

9381 13:30 - 14:00

*Power in the Aftermath of a Disaster: Whose Power Matters?*

Dicky Pelupessy, Victoria University, Australia

9817 14:00 - 14:30

*A Deviance Regulation Theory Approach on the Compulsory Earthquake Insurance of Turkey*

Hilal Terzi, Middle East Technical University, Turkey

Türker Özkan, Middle East Technical University, Turkey

9475 14:30 - 15:00

*New Behaviours and New Powers for the IoMe (Internet of Me): Designing Strategies for Our Post-Virtual, Polyvocal Social Media Space*

Heather Renee Barker, California State University Long Beach, USA



Friday Session I: 13:30 - 15:00

Room: 802

ACP - Qualitative/Quantitative Research in any other area of Psychology

Session Chair: Andi Maulida Rahmania

13302 13:30 - 14:00

*ASEAN Integration via ASEAN Identity Building among Thai SME Entrepreneurs*

Terapon Poorat, Bangkok University, Thailand

13316 14:00 - 14:30

*Information Adequacy during Organization Assimilation Process in Thai Organization*

Pomprom Chomngam, Bangkok University, Thailand

10408 14:30 - 15:00

*The Relationship between Perceptions of Parental Control with Tendency of Delinquency Behavior in Adolescent Who Were Involved in Tawuran*

Andi Maulida Rahmania, Gadjah Mada University, Indonesia

Dewi Retno Suminar, Airlangga University, Indonesia

Friday Session I: 13:30 - 14:30

Room: 803

ACP - Linguistics, Language & Psychology/Behavioral Science

Session Chair: Mika Igarashi

10380 13:30 - 14:00

*Factors Related to Sexual Risk Behavior of University Students in North Thailand*

Katekaew Seangpraw, University of Phayao, Thailand

9715 14:00 - 14:30

*L1 Metalinguistic Ability and Foreign Language Learning: The Case of Japanese Secondary School Students*

Mika Igarashi, University of Tokyo, Japan

F  
r  
i  
d  
a  
y



Friday Session I: 13:30 - 15:00

Friday Session I: 13:30 - 15:00

Room: 804

ACP - Psychology and Education

Session Chair: Roslina Ahmad Faisal

12469 13:30 - 14:00

*Satisfaction of Counseling Services among Gifted Students at the National Gifted Center in Malaysia*

Roslina Ahmad Faisal, National University of Malaysia, Malaysia

Noriah Mohamad Ishak, National University of Malaysia, Malaysia

Mariati Mohktar, National University of Malaysia, Malaysia

Jamaliah Hamdan, National University of Malaysia, Malaysia

Mohd Hakimie Zainal Abidin, National University of Malaysia, Malaysia

11414 14:00 - 14:30

*The Impact of the 101s Storybook Intervention Program on Executive Function, The 101s Social-Emotional Skills, and School Achievement in Preschoolers*

Duangporn Jinnatanapong, Mahidol University, Thailand

Vasunun Chumchua, Mahidol University, Thailand

Nuanchan Chutabhakdikul, Mahidol University, Thailand

Panadda Thanasetkorn, Mahidol University, Thailand

9593 14:30 - 15:00 (Moved from Virtual)

*Comparative Perception between Children and Adolescents on Their Relationship to Their Parents*

Samsunuwiati Marat, Tarumanagara University, Indonesia

Efi Fitriana, Padjadjaran University, Indonesia

Friday Session I: 13:30 - 15:00

Room: 805

ACP - Mental Health

Session Chair: Sharifah Munirah Syed Elias

10784 13:30 - 14:00

*Exploring the Relationships Between Emotional Labor Work-Family Conflict and Service Performance*

I-An Wang, National Sun Yat-Sen University, Taiwan

Ren Chuan Ko, Central South University, Taiwan

Shih Jung Chuang, Hong Kong Polytechnic University, Taiwan

5836 14:00 - 14:30

*Reminiscence Therapy for Older People Suffering from Loneliness, Anxiety and Depression: A Literature Review*

Sharifah Munirah Syed Elias, The University of Queensland, Australia

Christine Neville, The University of Queensland, Australia

Theresa Scott, The University of Queensland, Australia

9688 14:30 - 15:00 (Moved from Saturday)

*The Combination of Cognitive Behavioral Therapy and Antipsychotic Medication: A Case Study of Treating an 11 Year-Old Child with Psychosis*

Noor Aishah Rosli, University of Malaya, Malaysia

Friday Session I: 13:30 - 15:00

Room: 806

ACP Interdisciplinary - Topics in Psychology

Session Chair: Hui-Yi Lo

10559 13:30 - 14:00

*Computer-Based Assessment of Acute Effects of Exercise on Feeding-Related Behaviour*

Nor M. F. Farah, Universiti Kebangsaan Malaysia, Malaysia

Mahadir Ahmad, Universiti Kebangsaan Malaysia, Malaysia

Jeffrey M. Brunstrom, University of Bristol, UK

Jason M. R. Gill, University of Glasgow, UK

10876 14:00 - 14:30

*Affective Commitment and Voice Behavior, The Moderating Roles of Controls*

Sheng-Jie Su, Shih Chien University, Taiwan

I-an Wang, Shih Chien University, Taiwan

Chia-Lung Hsia, Shih Chien University, Taiwan

Shao-Wei Lee, Shih Chien University, Taiwan

9278 14:30 - 15:00

*Obsession with Purchasing Gadget: The Development of a Diagnostic Instrument*

Hui-Yi Lo, National Chung Hsing University, Taiwan



F  
r  
i  
d  
a  
y

Friday Session I: 13:30 - 15:00

Friday Session I: 13:30 - 15:00  
ACERP - Philosophy & Public Policy  
Session Chair: René Gabriëls

Room: 701

9570 13:30 - 14:00  
*What Should Kant Have Said? A Kantian Analysis against the Prohibition of a Kidney Market*  
Cansu Canca, University of Hong Kong, Hong Kong

11084 14:00 - 14:30  
*Neo-Liberal Policy Paradigm: Whose Policy and Whose Outcomes?*  
Puthsodary Tat, American University of Afghanistan, Afghanistan

9461 14:30 - 15:00  
*Expertocracy and Democracy*  
René Gabriëls, Maastricht University, Netherlands

Friday Session I: 13:30 - 14:30  
ACERP - Interdisciplinary - Topics in Ethics & Philosophy  
Session Chair: Jean du Toit

Room: 702

13099 13:30 - 14:00  
*Some Reflections on "Science is Power" as Manifest in Japanese Universities*  
Andrew T. Domondon, Waseda University, Japan

9441 14:00 - 14:30  
*Foucault and the Question of Power in Modern Technology*  
Jean du Toit, North-West University, South Africa



F  
r  
i  
d  
a  
y

Friday Poster Session I: 13:30 - 15:00  
Room: 12F Conference Hall

9685

*Emotional Literacy among School Children*

Saori Fujino, Hosei University, Japan

Yayoi Watanabe, Hosei University, Japan

9710

*The Relationship Between Regulation Strategies and Two Types of Engagements in Learning*

Takatoyo Umemoto, Nagoya University, Japan

Takamichi Ito, Kyoto University of Education, Japan

9728

*How Does Each School Personnel See Crisis Preparedness?*

Hisako Nishiyama, Fukuoka University of Education, Japan

Yayoi Watanabe, Hosei University, Japan

Sayuri Fujino, Hosei University, Japan

11038

*How to Assess Phonological Awareness in Italian Children with and without Reading Difficulties: A Preliminary Study Using New Tools*

Maria Chiara Fastame, University of Cagliari, Italy

12639

*Incorporating the Effect of Multiple Intelligences on Multisensory Instruction: The Visual Art Curriculum for Junior High School Students*

Yi-Fang Chen, National Taiwan University of Arts, Taiwan

12656

*Strategies of Creative Thinking on Visual Art Imagination Teaching*

Jih-Way Chang, National Taiwan University of Art, Taiwan

12721

*The Development and Construction of the Scoring Rubrics in Calligraphy Arts Education in Junior High Schools*

Hsin-Jung Tsai, National Taiwan University of Arts, Taiwan

12793

*Abstract of the Effect of Collaborative Learning on Creativity of Visual Arts for Junior High School Students*

Chin-Hua Tang, National Taiwan University of the Arts, Taiwan

13010

*Exploring the Practicum Experience of Taiwanese Junior College Nursing Students*

Chun-Ping Tung, National Taipei University of Nursing and Health Science, Taiwan

13307

*A Study on the Correlations Among the Role Stress, Social Support, and Well-Being of Junior High School Teachers Serving as Administrative Staff*

Chun-Chi Chou, National Taiwan University of Arts, Taiwan

11791

*The Hidden Educational Power of Taiwan Temple Ornaments: Behind the Cochin Ceramics*

Huei-Mei Shi, National Taiwan University of Arts, Taiwan

8858

*A Preoperative Preparation: Effects on Children's and Caregiver's Emotional Behavior Associated with Surgery*

Ling-Yu Hsieh, Ditmanson Medical Foundation Chia-Yi Christian Hospital, Taiwan

Pei-Ya Wang, Ditmanson Medical Foundation Chia-Yi Christian Hospital, Taiwan

Hsin-Ping Liu, Ditmanson Medical Foundation Chia-Yi Christian Hospital, Taiwan

Chia-Jung Lin, Ditmanson Medical Foundation Chia-Yi Christian Hospital, Taiwan

Mei-Hua Yu, Ditmanson Medical Foundation Chia-Yi Christian Hospital, Taiwan

9074

*Basic Individual Characteristics, Political Attitudes, and Voting: Research in the 2012 Korean President Election*

Hyeon Jeong Kim, Chungbuk National University, South Korea

Sang Hee Park, Chungbuk National University, South Korea



F  
r  
i  
d  
a  
y



Friday Poster Session I: 13:30 - 15:00

Room: 12F Conference Hall

9147

*Free Will Beliefs and Moral Responsibility: Disbelief in Free Will Leads to Less Responsibility for Third Person's Crime*

Takumi Watanabe, University of Tokyo, Japan

Ryosuke Sakurai, University of Tokyo, Japan

Kaori Karasawa, University of Tokyo, Japan

9224

*Blood Type and Personality: A Self-Fulfilling Prophecy?*

Zacharias Dupaix, Brigham Young University - Hawaii, USA

Kyle Madsen, Brigham Young University - Hawaii, USA

Scott Kemsley, Brigham Young University - Hawaii, USA

Ronald Mellado Miller, Brigham Young University - Hawaii, USA

Boyd Timothy, Brigham Young University - Hawaii, USA

9395

*Underachievers in Mathematics in Taiwan & Methodology Issues Concerning Underachievement Research*

Chia Cheng Chen, National Taiwan University of Arts, Taiwan

12534

*The Gratitude to Well-Being for Arts University Students*

Tzeng-Rong Huang, National Taiwan University of Arts, Taiwan

9229

*Behavioral and Emotional Predictors of Life Satisfaction in Stay-At-Home Mothers*

Cara A. Nebeker, Brigham Young University - Hawaii, USA

Daniel Thomas Kinikini, Brigham Young University - Hawaii, USA

Haley Thomas, Brigham Young University - Hawaii, USA

Melece Meservy, Brigham Young University - Hawaii, USA

Ronald M. Miller, Brigham Young University - Hawaii, USA

15:00 - 15:15

Coffee Break



F  
r  
i  
d  
a  
y

Friday Session II: 15:15 - 16:45

Friday Session II: 15:15 - 16:15

Room: 801

ACP - Community Development

Session Chair: Made Diah Lestari

8254 15:15 - 15:45

*Influence of Acculturation on Sexual Attitude and Behaviour of South Asian Women in Australia*

Nafisa Asif, University of Sydney, Australia

Zakia Hossain, University of Sydney, Australia

12849 15:45 - 16:15

*Program on Building Positive Self-Concept in Girls to Suppress the Number of Early Marriages in Pengotan Village of Bangli, Bali*

Made Diah Lestari, Udayana University, Indonesia

Ni Putu Natalya, Udayana University, Indonesia

Indri Oktavia Rospita, Udayana University, Indonesia

Wayan Citra Wulan Sucipta Putri, Udayana University, Indonesia

Ni Made Dian Sulistiowati, Udayana University, Indonesia



F  
r  
i  
d  
a  
y

Friday Session II: 15:15 - 16:45

Room: 802

ACP - Qualitative/Quantitative Research in any other area of Psychology

Session Chair: William D. Crano

9546 15:15 - 15:45

*Hampered Stakes? The Influence of Autonomy and Deviation from Value Norms on Well-Being in Japan, Germany and the US*

Tobias Soeldner, German Institute for Japanese Studies, Japan

9313 15:45 - 16:15

*A Probabilistic Solution for the Mystery of Japanese Blood Type Prediction Accuracy*

Hideo Hirose, Kyushu Institute of Technology, Japan

11971 16:15 - 16:45

*The Rules That Govern Minority Influence: How the Minority Moves the Majority to Its Position*

William D. Crano, Claremont Graduate University, USA

Friday Session II: 15:15 - 16:45

Room: 803

ACP - Linguistics, Language & Psychology/Behavioral Science

Session Chair: Sonna Pelz

10490 15:15 - 15:45

*Junior High Schools English Teachers Perceptions of Junior High School Students Social and Academic Language and Teaching Strategies*

Lai Kuo-Tang, National Chi-Nan University, Taiwan

8487 15:45 - 16:15

*Influence of Nonverbal Component on Credibility Assessment in High Stakes Situations*

Maciej Bożek, University of Silesia, Poland

Bogdan Smolka, Silesian University of Technology, Poland

12174 16:15 - 16:45

*The Power of Money: Assessing the Relationship between Miserliness and Willingness-To-Pay Statements*

Sonna Pelz, University of Hohenheim, Germany

Friday Session II: 15:15 - 16:45

**Friday Session II: 15:15 - 16:45**  
**ACP - Psychology & Education**  
**Session Chair: Jennifer K. Jones**

**Room: 804**

12584 15:15 - 15:45

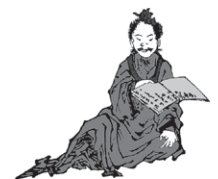
*Improve Your Teaching Quality Used Meta-Teaching Skill*  
Shahlan Surat, Universiti Kebangsaan Malaysia, Malaysia  
Saemah Rahman, Universiti Kebangsaan Malaysia, Malaysia  
Saadiah Kumin, Universiti Kebangsaan Malaysia, Malaysia

10997 15:45 - 16:15

*A Study to Detect and Reform Aberrant Responses that Affect Results in Mastery Testing*  
Hung-Yi Lu, Fu Jen Catholic University, Taiwan  
Che-Ming Chang, Fu Jen Catholic University, Taiwan

12868 16:15 - 16:45

*The Effects of Internal and External Focus of Attention on Postural Performance in a Muscular Endurance Task*  
Jennifer K. Jones, Independent Researcher, Thailand  
John Erskine, Staffordshire University, UK



**Friday Session II: 15:15 - 16:45**  
**ACP - Psychology & Education**  
**Session Chair: Hye Kyung Kim**

**Room: 805**

8253 15:15 - 15:45

*The Relationship among Abusive Supervision, Job Satisfaction and General Health: The Mediating Effect of Emotional Labor*  
I-An Wang, Shih Chien University, Taiwan  
Shih Jung Chuang, Shih Chien University, Taiwan  
Chih-Chu Lee, National Pingtung University of Science and Technology, Taiwan

9984 15:45 - 16:15

*Effects of Workplace Climate on Help-Seeking Attitude of Working Males: Difference Depending on the State of Distress*  
Yumiko Maekawa, Nagoya University, Japan  
Atsuko Kanai, Nagoya University, Japan

8709 16:15 - 16:45

*Making Sense of Health Narratives: Effects of Narrative Perspectives on Self-Referent Thoughts and Narrative Engagement*  
Hye Kyung Kim, Nanyang Technological University, Singapore  
Tae Kyoung Lee, Cornell University, USA

**Friday Session II: 15:15 - 16:15**  
**ACP - Mental Health**  
**Session Chair: Wonsup Cho**

**Room: 806**

9667 15:15 - 15:45

*Cultural Embeddedness as a Moderator of the Relationship Between Depressive Symptoms and Job Satisfaction in a Collectivist Culture*  
Nurul Abas, University of Leipzig, Germany  
Kathleen Otto, Phillips University of Marburg, Germany

9655 15:45 - 16:15

*Identifying the Differences of Health Status and Depression among Female Marriage Immigrants in South Korea: Focused on Urban - Rural Regions*  
Wonsup Cho, Seoul National University, South Korea  
Seunghyun Yoo, Seoul National University, South Korea  
Hyekyeong Kim, Korea Association of Health Promotion, South Korea

F  
r  
i  
d  
a  
y



Friday Session II: 15:15-16:45

Friday Session II: 15:15 - 16:45

Room: 701

ACERP - Interdisciplinary - Perspectives in Ethics & Philosophy

Session Chair: Pascal Soepper

8234 15:15 - 15:45

*The Myth of the Impossibility of Peace: A Mytho-Historical Hybridized Discourse*

Clive Zammit, University of Malta, Malta

11348 15:45 - 16:15

*Moral Pluralism in Environmental Ethics*

Prabhu Venkataraman, Indian Institute of Technology Guwahati, India

Devatha Morang, Indian Institute of Technology Guwahati, India

12295 16:15 - 16:45

*The Declining Power of the Nation State in a World of Interconnectivity, Transnational Orders and Cyberspace*

Pascal Soepper, Niigata University, Japan



Friday Session II: 15:15 - 16:15

Room: 702

ACERP - Ethics - Medical Ethics

Session Chair: Jon Hugaas

8159 15:15 - 15:45

*Life in Kazuo Ishiguro's Never Let Me Go*

Yu-Min Huang, National Changhua University of Education, Taiwan

7301 15:45 - 16:15

*Intentional Non-Disclosure in Japanese Medical Practice: A Kantian Critique*

Jon Hugaas, University of Stavanger, Norway

Friday Session II: 15:15 - 16:15

Room: 1203

ACP - Research in Visual Psychology

Session Chair: Kin-Pou Lie

12579 15:15 - 15:45

*Classifying Musical Reading Expertise by Eye Movement Analysis Using Automatic Classification Algorithms*

Thierry Baccino, University of Paris 8, France

Véronique Drai-Zerbib, University of Paris 8, France

9756 15:45 - 16:15

*Hierarchical Acquisition of Visual Specificity in Spatial Contextual Cueing*

Kin-Pou Lie, The Open University of Hong Kong, Hong Kong

F  
r  
i  
d  
a  
y

Friday Poster Session II: 15:15-16:45  
Room: 12F Conference Hall

7332

*Effects of a Water-Based Exercise Program on Sleep Quality in Older Adults*

Li-Jung Chen, National Taiwan University of Sport, Taiwan

Po-Wen Ku, National Changhua University of Education, Taiwan

Chih-Yang Taun, National Taiwan University of Sport, Taiwan

7380

*Longitudinal Associations of Accelerometer-Assessed Physical Activity and Sedentary Time with Mental Well-Being in Older Adults*

Po-Wen Ku, National Changhua University of Education, Taiwan

Li-Jung Chen, National Taiwan University of Sport, Taiwan

Wen-Jung Sun, Taipei City Hospital Zhongxing Branch, Taiwan

8792

*Attentional Bias in the High Health Anxiety Individual under Manipulation of Health Anxiety: Focus on the Health Threat Pictures*

Min-Hung Teng, National Chung-Cheng University, Taiwan

8884

*Association between Anxiety, Depression and Nicotine Dependence in Thai Current Cigarette Smokers*

Napakkawat Buathong, Chulalongkorn University, Thailand

Rasmon Kalayasiri, Chulalongkorn University, Thailand

9041

*Prevalence of Facebook Addiction and Related Factors among Thai High School Students*

Rungmanee Yingyeun, Chulalongkorn University, Thailand

Jiraporn Khumsri, Chulalongkorn University, Thailand

Mereerat Manwong, Chulalongkorn University, Thailand

Nitt Hanprathet, Chulalongkorn University, Thailand

Muthita Phanasathit, Chulalongkorn University, Thailand

9052

*The Relation between Acculturation Attitudes and Depression among Japanese People in Brazil*

Koyuri Sako, Okayama University, Japan

Tomoko Tanaka, Okayama University, Japan

Junghuims Lee, Kanagawa Dental University, Japan

9232

*Intrinsic Religiosity Improves Adoptees' Psychological Health*

Cara A. Nebeker, Brigham Young University - Hawaii, USA

Ronald M. Miller, Brigham Young University - Hawaii, USA

9519

*Psychological Distress and Its Correlation in Korean Breast Cancer Patients*

Jin-Hee Park, Ajou University, South Korea

Young-Mi Jung, Ajou University, South Korea

Sun Hyoung Bae, Dong-A University, South Korea

9592

*Perceived Community Environment and Physical Activity: A Case of Low-Income Elderly Community in Korea*

Nan-He Yoon, Seoul National University, South Korea

Dong-Ha Kim, Seoul National University, South Korea

Seunghyun Yoo, Seoul National University, South Korea

Ye-Hwa Yun, Seoul National University, South Korea

Jong-Sang Sung, Seoul National University, South Korea

13241

*The Effects of Weather on Hong Kong and Shenzhen Stock Market Returns*

Zhuhua Jiang, Hankuk University of Foreign Studies, South Korea

Sang Hoon Kang, Pusan National University, South Korea

Chongcheul Cheong, Yeungnam University, South Korea

Seong-Min Yoon, Pusan National University, South Korea

13257

*An Investigation into the Use of Internet Pornography among Young Internet Users in Singapore*

Kai Keat Lim, National University of Singapore, Singapore

Gabriel Tan, National University of Singapore, Singapore

Chi Meng Chu, Ministry of Social and Family Development - Clinical & Forensic Psychology Branch, Singapore



F  
r  
i  
d  
a  
y

**Friday Poster Session II: 15:15-16:45**

**Room: 12F Conference Hall**

9354

*Mediator Effectiveness Hypothesis: More Retrieval Routes Will Lead to Better Memory Retention*

Jun Zheng, Beijing Normal University, China

Wei Zhang, Beijing Normal University, China

Tongtong Li, Beijing Normal University, China

Zhaomin Liu, China University of Political Science and Law, China

Liang Luo, Beijing Normal University, China

9375

*Contributions of Beliefs and Processing Fluency to the Effect of Font-Size on Judgments of Learning*

Tongtong Li, Beijing Normal University, China

Xiao Hu, Beijing Normal University, China

Jun Zheng, Beijing Normal University, China

Ningxin Su, Beijing Normal University, China

Liang Luo, Beijing Normal University, China

9660

*Increasing Positive Affect from Mindfulness: The Mediating Role of Peace of Mind*

Yi-Chen Lee, Chung-Yuan Christian University, Taiwan

8077

*The Effect of Gratitude Intervention on Mental Well-Being*

Chih-Che Lin, Ming Chuan University, Taiwan

8931

*Relationship among Social Self-Efficacy, Learning Activities with Friends and a Sense of Fulfillment in University Life*

Rumi Matsushima, Kyoto Notre Dame University, Japan

16:45 - 17:00

Coffee Break

**Featured Speaker Session: 17:00 - 17:45**

**Room: 12F Conference Hall**

**Featured Presentation**

Frank S. Ravitch, Michigan State University College of Law

**19:00 - 21:00**

**A Night Out in Osaka: Conference Dinner (Ticketed and Optional)**

Come and join your fellow delegates on an evening out in Osaka  
Please meet in the Osaka International Convention Center 1F at 18:30.

This is ticketed at 5000 JPY and there are a limited number of spaces.  
If you would like to join, please register on conference information desk by 12:30 on Friday, March 27.



F  
r  
i  
d  
a  
y



# Saturday

## 土曜日



**Saturday Session I: 9:00-10:30**

**Saturday Session I: 9:00 - 10:30 Room: 802**  
**ACERP - Religion - Feminism & Religious Traditions**  
**Session Chair: Kate Jibromah**

7987 9:00 - 9:30  
*Power as Goddess: Feminist Roots of Indian Religion*  
 Madhumita Dutta, Vidyasagar College for Women, India

9571 9:30 - 10:00  
*The Shakti (Power): An Empowerment of Women in the Context of India*  
 Louis Stanislaus, De La Salle University, Philippines

9453 10:00 - 10:30  
*The Interplay of Power and Feminism: A Typical Interpretation of Judges 4:4-22*  
 Kate Jibromah, Adeyemi College of Education, Nigeria



**Saturday Session I: 9:00 - 10:30 Room: 803**  
**ACERP - Religion - Philosophy & Culture**  
**Session Chair: Chollada Thongtawee**

9498 9:00 - 9:30  
*The Evolution and Distortion of Filial Piety in Confucianism*  
 Yajun Chen, Anhui Normal University, China

9808 9:30 - 10:00  
*The Habermas-Gadamer Debate: A Heideggerian Interpretation of Gadamer's "Tradition"*  
 Yi Jonathan Chua, National University of Singapore, Singapore

9030 10:00 - 10:30  
*From Traditional Ritual Mask Performances to Contemporary Touristic Festivals - the Adaptation to a Capitalist Context: The Case Study of Pi Ta Khon*  
 Chollada Thongtawee, Silpakom University, Thailand

**Saturday Session I: 9:00 - 10:30 Room: 804**  
**ACP - Interdisciplinary: Perspectives in Psychology**  
**Session Chair: Mariam Adawiah Dzulkifli**

11094 9:00 - 9:30  
*The "Uncanniness"*  
 Yi-Hua Lin, National Taipei University of Technology, Taiwan

10287 9:30 - 10:00  
*Spiritual Well-Being and Health Condition among Muslim Senior Citizens in Hulu Langat, Kajang District, Malaysia*  
 Nursyahidah Khalid, International Islamic University Malaysia, Malaysia

12305 10:00 - 10:30  
*The Role of Memory Control Processes in Enhancing the Memory of Memorizers*  
 Mariam Adawiah Dzulkifli, International Islamic University Malaysia, Malaysia  
 Abdul Wahab bin Abdul Rahman, International Islamic University Malaysia, Malaysia  
 Jamal Ahmed Bashier Badi, International Islamic University Malaysia, Malaysia  
 Abdul Kabir Hussain Solihu, International Islamic University Malaysia, Malaysia

S  
a  
t  
u  
r  
d  
a  
y

**Saturday Session I: 9:00-10:30**

**Saturday Session I: 9:00 - 10:30**

**Room: 805**

**ACP – Interdisciplinary Topics in Psychology**

**Session Chair: Mahadir Ahmad**

9300 9:00 - 9:30

*Yoga: The Power to Transform*

Uma Shenoy, Independent Practitioner, USA

9319 9:30 - 10:00

*The Effect of Yoga Training on Emotion Regulation*

Nurlaila Anisahwati, Gadjah Mada University, Indonesia

Nida UI Hasanat, Psikologi UGM, Indonesia

9662 10:00 - 10:30

*The Effects of Flexibility Exercise on Stress and Psychological Well-Being in Male University Students:*

*A Randomised Controlled Trial*

Mahadir Ahmad, The National University of Malaysia, Malaysia

Leeyana Adam, The National University of Malaysia, Malaysia

Arimi Fitri Mat Ludin, The National University of Malaysia, Malaysia

Farah Fauzi, The National University of Malaysia, Malaysia



**Saturday Session I: 9:00 - 10:30**

**Room: 806**

**ACP - Mental Health**

**Session Chair: Antero Rosauro V. Arias Jr.**

9107 9:00 - 9:30

*Psychological Distress and Attitudes toward Seeking Professional Psychological Help among University Students*

Natthawut Arin, Chiang Mai University, Thailand

9405 9:30 - 10:00

*Factor Structure: A Study of Psychological Capital in Nursing Students at Government Universities in Thailand*

Amaraporn Surakarn, Srinakharinwirot University, Thailand

8616 10:00 - 10:30

*Integrating the NICHHD Forensic Investigative Interview Protocol in the Biopsychosocial-Spiritual Model of Care for Victims of CSA and CSE*

Antero Rosauro V. Arias Jr., University of Santo Tomas Graduate School, Philippines

**Saturday Session I: 9:00 - 10:30**

**Room: 701**

**ACP - Linguistics, Language & Psychology/Behavioral Science**

**Session Chair: Tsan-Chang Lin**

9063 9:00 - 9:30

*Tumor Necrosis Factor Alpha is a Predictor for Malnutrition in Patients with Heart Failure*

Tsuey-Yuan Huang, Chang Gung University of Science and Technology, Taiwan

10761 9:30 - 10:00

*Communication Skills through iPad: Evaluation From Special Education Teachers*

Nor Siti Rokiah Abdul Razak, Sultan Idris Education University, Malaysia

12593 10:00 - 10:30

*An Empirical Study of Factors Influencing the Suspect's Decision to Confess to the Police*

Tsan-Chang Lin, Central Police University, Taiwan

Chih-Hung Shih, Central Police University, Taiwan

Gung-Huei Lin, Kinmen Police Department, Taiwan

Ju-Hui Chen, Kaohsiung Police Department, Taiwan

S  
a  
t  
u  
r  
d  
a  
y



Saturday Session I: 9:00-10:30

Saturday Session I: 9:00 - 10:30

Room: 702

ACP - Qualitative/Quantitative Research in any other area of Psychology

Session Chair: Tam Cai Lian

12001 9:00 - 9:30

*Episodic Occurrence of Cognitive Dissonance among Nurses and Midwives in the Regional Health Units of Southern Cebu*

Laisa Monika I. Legaspi, University of San Jose Recoletos, Philippines

10212 9:30 - 10:00

*The Effects of Creative Therapies in the Self Esteem of Academically Stressed Students at University of the East Manila*

Rizalyn L. Wagas, University of the East Manila, Philippines

7221 10:00 - 10:30

*Slowing the Spread of Diabetes: Investigating Health Knowledge, Beliefs, and Lifestyle Among Malaysians*

Tam Cai Lian, Monash University Malaysia, Malaysia

Gregory Bibby Bonn, Nagoya University, Japan

Wong Chee Piau, Monash University Malaysia, Malaysia



S  
a  
t  
u  
r  
d  
a  
y

Saturday Poster Session I: 9:00 - 10:30  
Room: 1008

6861

*Education Profession Ethics with University Professor*

Norah Bint Abdullah Bin Muteb Alshehri, Princess Nora Bint Abdulrahman University, Saudi Arabia

9149

*The Association between Free Will Beliefs and Stereotypes: People's Belief in Fatalism Promotes Gender Stereotypes*

Takumi Watanabe, University of Tokyo, Japan

Kaori Karasawa, University of Tokyo, Japan

8851

*The Millennial Inventory: A New Instrument to Identify Pre- Versus Post- Millennialist Orientation*

David Staves, Brigham Young University - Hawaii, USA

Kyle Madsen, Brigham Young University - Hawaii, USA

Zachary Tilton, Brigham Young University - Hawaii, USA

Emily Sinkovic, Brigham Young University - Hawaii, USA

Chad Ford, Brigham Young University - Hawaii, USA

Boyd Timothy, Brigham Young University - Hawaii, USA

Ronald M. Miller, Brigham Young University - Hawaii, USA

11823

*Do Racial Backgrounds of Immigrants Lead to Different Perceptions among Americans?*

Hisako Matsuo, Saint Louis University, USA

Melissa Garcia, Saint Louis University, USA

Savitri Grover, Saint Louis University, USA

Habiba Ibrahim, Saint Louis University, USA

11571

*Media Influences on Body Image Dissatisfaction: The Moderating Role of Collectivism vs. Individualism*

Yu Du, University of Texas at Austin, USA

10668

*First Impressions: Egotism or Universals?*

Lee Sze Hang, Brigham Young University - Hawaii, USA

Ronald Mellado Miller, Brigham Young University - Hawaii, USA

10594

*The Influence of Chopstick Length on Taste Evaluations*

Hung-Ming Lin, Minghsin University of Science and Technology, Taiwan

10460

*The Effects of Association and Emotion in False Memory*

Chen-Tzu Wu, Taoyuan Guanyin Township Caota Elementary School, Taiwan

Shu-Fang Kao, National Hsinchu University of Education, Taiwan

9973

*Exploring the Psychological Structure of Science-Technology by Comparing Nanotechnology and Animal Cloning*

Sunhee Kim, Seowon University, South Korea

Jaesun Wang, Honam University, South Korea

9972

*The Impact of Micro-Psychological and Macro-Structural Factors to Publics Attitude Change toward Nuclear Energy after the Fukushima Accident*

Seoyong Kim, Ajou University, South Korea

Jaesun Wang, Homan University, South Korea

9223

*An Examination of Finkel's Marriage Intervention Applied to a Religious Population*

David W. Staves, Brigham Young University - Hawaii, USA

Ronald Mellado Miller, Brigham Young University - Hawaii, USA

13110

*Making the Invisible Visible: An Innovative Method to Enhance Clinical Reasoning Ability in Adult Nursing*

Wei-Shu Lai, Meiho University, Taiwan

Yu-Jue Hong, Chung-Jen Junior College of Nursing, Taiwan

Shiow-Li Hwang, Asia University, Taiwan



S  
a  
t  
u  
r  
d  
a  
y

Saturday Poster Session I: 9:00 - 10:30

Room: 1008

12863

*The Development Program to Control Stroke Risk Factors by Sufficiency Economy Philosophy and Participation*

Chutarat Sathirapanya, Prince of Songkla University, Thailand

Pomchai Sathirapanya, Prince of Songkla University, Thailand

Anukool Thongmee, Phattalung Provincial Public Health Office, Thailand

Jammaree Trichan, Phattalung Provincial Public Health Office, Thailand

Charlee Trichan, Prince of Songkla University, Thailand

6766

*The Effects of Emotionally Toned Stimuli on Spatial Attention*

Christine Hudson, Victoria University of Wellington, New Zealand

John McDowall, Victoria University of Wellington, New Zealand

7635

*If You Want to Save Have Just One Credit Card: Why People Tend to Spend More Money with Multiple Cards*

Moty Amar, Ono Academic College, Israel

Yael Hallak, Tel Aviv University, Israel

Dan Ariely, Duke University, Israel

9198

*Comparative Study on Media/Information Education in Higher Education in Finland and Japan*

Yutaro Ohashi, Nippon Institute of Technology, Japan

Sara Sintonen, University of Helsinki, Finland

Heikki Kynäslähti, University of Helsinki, Finland

9083

*How People Take and Share Travel Photos in the Age of Social Media: An in-Depth Study of Japanese University Students*

Kana Ohashi, Keio University, Japan

Fumitoshi Kato, Keio University, Japan

10:30 - 10:45

Coffee Break



S  
a  
t  
u  
r  
d  
a  
y



Saturday Session II: 10:45 - 12:45

**Saturday Session II: 10:45 - 12:15**  
**ACP - Workshop**

**Room: 801**

8400 10:45 - 12:15  
*A New Way to D.I.E.: Intercultural Communication Strategies*  
Daniel Velasco, The Chicago School of Professional Psychology, USA

**Saturday Session II: 10:45-12:15**  
**ACERP - Religion - Religion & Peace Studies**  
**Session Chair: Naomi Watanabe**

**Room: 802**

13278 10:45 - 11:15  
*The Power of Nonviolence in Procuring Lasting Sociopolitical and Economic Change: A Christian Ethical Perspective*  
Christian Onyenaucheya Uchegbue, University of Calabar, Nigeria

9146 11:15 - 11:45  
*Are the Devotions of the Passion of Jesus in Macau Still a "Dangerous Memory"?*  
João Marques Eleutério, University of Saint Joseph, Macau

13017 11:45 - 12:15  
*Sri Lanka Ethnical Background and History of Conflict*  
Naomi Watanabe, Independent Researcher, Japan

**Saturday Session II: 10:45 - 12:15**  
**ACERP - Philosophy - Philosophy & Religion**  
**Session Chair: Min-Chieh Chiu**

**Room: 803**

8744 10:45 - 11:15  
*Merleau-Ponty's Ontology of Flesh and Vegetarianism*  
Su-chen Wu, Fo Guang University, Taiwan

8318 11:15 - 11:45  
*Vision of Sri Aurobindo and Teilhard De Chardin: Empowered by Creative Evolution and Mysticism*  
Kamaladevi R. Kunkolienker, P.E.S's College of Arts and Science, India

12238 11:45 - 12:15  
*Yin Shun's Research Regarding Maitreya Pure Land*  
Min-Chieh Chiu, National Tainan University, Taiwan



S  
a  
t  
u  
r  
d  
a  
y

**Saturday Session II: 10:45 - 12:45**

**Saturday Session II: 10:45 - 12:15** **Room: 804**  
**ACP - Industrial Organization & Organization Theory**  
**Session Chair: Olga Patosha**

8806 10:45 - 11:15  
*Discovering Microfluidics Technology Opportunity Using Patent Analysis*  
 Arnold Wang, National Chung-Hsing University, Taiwan  
 Juite Wang, National Chung-Hsing University, Taiwan

9168 11:15 - 11:45  
*The Driving Success Factors of the Online Food Ordering System - Empirical Evidence from the Utaut Model*  
 Hui-Ping Chen, National Chung Hsing University, Taiwan  
 Ying-Jiun Hsieh, National Chung Hsing University, Taiwan

9452 11:45 - 12:15  
*Mood and the Decision to Purchase High-Tech Products*  
 Olga Patosha, National Research University Higher School of Economics, Russia

**Saturday Session II: 10:45 - 12:15** **Room: 805**  
**ACP - Mental Health**  
**Session Chair: Noor Aishah Rosli**

7595 10:45 - 11:15  
*Counselling and Psychotherapy for Chinese People: A Systematic Review*  
 Feng Davy Guo, University of Manchester, UK

8893 11:15 - 11:45  
*The Effectiveness of Cognitive Behavior Therapy Group Counseling on Anger and Aggression Among Prisoners in Malaysia*  
 Norzihan Ayub, Universiti Kebangsaan Malaysia, Malaysia  
 Rohany Nasir, Universiti Kebangsaan Malaysia, Malaysia  
 Nor Ba'yah Abdul Kadir, Universiti Kebangsaan Malaysia, Malaysia  
 Mohd Suhaimi Mohamad, Universiti Kebangsaan Malaysia, Malaysia

~~9688 11:45 - 12:15 (Moved to Friday)~~  
~~*The Combination of Cognitive Behavioral Therapy and Antipsychotic Medication: A Case Study of Treating an 11 Year Old Child with Psychosis*~~  
~~Noor Aishah Rosli, University of Malaya, Malaysia~~

**Saturday Session II: 10:45 - 12:15** **Room: 806**  
**ACP - Psychology & Education**  
**Session Chair: Maree Sugai**

7969 10:45 - 11:15  
*Professional Development Workshop Model for Suicide Intervention*  
 David Lees, University of Tasmania, Australia

12853 11:15 - 11:45  
*An Interpretive Phenomenological Analysis of Career Choice in Science: Evidence from Malaysian Undergraduates*  
 Yit Sean Chong, Monash University, Malaysia  
 Pervaiz K. Ahmed, Monash University, Malaysia  
 Ai Hwa Quek, HELP University, Malaysia  
 Yee Quan Tham, Monash University, Malaysia

7335 11:45 - 12:15  
*Investigation into the Cultural Specific Peer-Group Pressures and Expectations That May Contribute to the Duration of Isolation in Hikikomori Sufferers*  
 Maree Sugai, Tohoku University of Community Service and Science, Japan



S  
a  
t  
u  
r  
d  
a  
y

Saturday Session II: 10:45 - 12:45

**Saturday Session II: 10:45 - 12:15**                      **Room: 701**  
**ACP - Linguistics, Language & Psychology/Behavioral Science**  
**Session Chair: Stephen B. Ryan**

5867      10:45 - 11:15  
*Are Men Really Challenging in Conversation? Exploring Gender Stereotype in Everyday Talk*  
Yoshihiko Yamamoto, Ritsumeikan University, Japan

7329      11:15 - 11:45  
*Motivation Leads to Achievement? A Study on Students of Translation Major*  
Hui-Wen Chen, Chang Jung Christian University, Taiwan  
Chin-Cheng Kao, National Dong Hwa University, Taiwan  
Sa-Hui Fan, National Taichung University of Education, Taiwan

8897      11:45 - 12:15  
*Cultural Schema As a Source of Cross-Cultural Friction*  
Stephen B. Ryan, Yamagata University, Japan

**Saturday Session II: 10:45 - 12:45**                      **Room: 702**  
**ACP - Qualitative/Quantitative Research in any other area of Psychology**  
**Session Chair: Hsien-Chang Kuo**

11383      10:45 - 11:15  
*Hearing Filipino Journalists Side of the Story: A Mixed Method Approach*  
Anna Gabrielle F. Cerezo, De La Salle University, Philippines  
Alison D. Galian, De La Salle University, Philippines  
Gianina Kyla Q. Mañalac, De La Salle University, Philippines  
Maria Patricia R. Ysmael, De La Salle University, Philippines  
Maria Caridad H. Tarroja, De La Salle University, Philippines

11723      11:15 - 11:45  
*Perspectives of Primary Market Actors on Equity-Crowdfunding Regulation in Taiwan - A Qualitative Analysis*  
Chang-Hsien Tsai, National Tsing Hua University, Taiwan

11640      11:45 - 12:15  
*Intercultural Prejudice Reduction in the Customer Service Context*  
Chen-Ya Wang, National Tsing Hua University, Taiwan

8686      12:15 - 12:45  
*CEO Constellation, Capital Structure and Financial Performance*  
Hsien-Chang Kuo, Shih Chien University, Taiwan  
Lie-Huey Wang, Ming Chuan University, Taiwan



S  
a  
t  
u  
r  
d  
a  
y



Saturday Poster Session II: 10:45 - 12:15

Room: 1008



S  
a  
t  
u  
r  
d  
a  
y

8694

*Using OSCE to Evaluate the Effects of Scenario-Based Learning in Baccalaureate Nursing Students: Example of the Course of Physical Assessment*

Yu-Hsin Wang, Chang Gung University of Science and Technology, Taiwan  
Shu-Chun Lin, Chang Gung University of Science and Technology, Taiwan  
Lee-Fen Ni, Chang Gung University of Science and Technology, Taiwan  
Hsiang-Ping Huang, Chang Gung University of Science and Technology, Taiwan  
Jun-Yu Fan, Chang Gung University of Science and Technology, Taiwan

9396

*Association of Psychological Domain of Quality of Life, Unhealthy Habits, and Metabolic Syndrome: A Nationwide Survey in Taiwan*

Lee-Fen Ni, Chang Gung University of Science and Technology, Taiwan  
Yu-Tzu Dai, National Taiwan University, Taiwan

9518

*Identifying Key Domains for Physical Activity Promotion at Daycare Centers Using Photovoice*

Eunji Ha, Seoul National University, South Korea  
Jihye Hong, Seoul National University, South Korea  
Seunghyun Yoo, Seoul National University, South Korea

9557

*Demographic and Disease Characteristics Differences in Hypoglycemia Problem-Solving Ability*

Fei-Ling Wu, Chang Gung University of Science and Technology, Taiwan

9595

*The Influence of Social Skills and Support Promotion on the Sociocultural Adjustment of Foreign Care Workers in Japan*

Kaori Hatanaka, Okayama University, Japan  
Tomoko Tanaka, Okayama University, Japan

10165

*The Schooling Experience of Exchange Students From China in Taiwan*

Yi-Ju Ke, Xi-Men Primary School, Taiwan  
Li-Li Chang, National Pingtung University, Taiwan

12603

*A Case Study on the Life-Line of a Mother of Multiple Children with Disabilities and Faced Limitation of Prenatal Diagnosis*

Miyako Kimura, St. Marianna University School of Medicine, Japan

12617

*Cultural Differences in Psychological Reactance: Responding to Censorship*

Andy H. Ng, York University, Canada  
Mohammad S. Kermani, York University, Canada  
Richard N. Lalonde, York University, Canada

13024

*The Compositions, Antecedents and Consequences of Brand Loyalty*

Chien-An Lin, National Kaohsiung University of Hospitality and Tourism, Taiwan

13028

*Education Beyond the Classroom: Effects of Service-Learning on Students' Nursing Core Competencies, Attitudes, and Values*

Yu-Jue Hong, Chung-Jen Junior College of Nursing, Taiwan  
Wei-Shu Lai, Meiho University, Taiwan  
Shiow-Li Hwang, Asia University, Taiwan  
Hua-Shan Wu, Asia University, Taiwan

9115

*An Analytic Study on the Therapeutic Boundary between Counseling Psychologist and Sexual-Abused Children*

Wen-Wen Lin, National Kaohsiung Normal University, Taiwan  
Li-Fang Tsai, National University of Tainan, Taiwan

9120

*A Study of Professional Helpers' Experience in Self-Care Though Mindfulness Yoga*

Yu-Fang Hsu, National Kaohsiung Normal University, Taiwan

**Saturday Poster Session II: 10:45 - 12:15**

**Room: 1008**

12945

*The Application of Transformational Leadership for Improvement of the Preparation of Nurse License Examination*

Nai-Hui Chien, National Taipei University of Nursing and Health Sciences, Taiwan

Shu-Chen Wang, Hsin Sheng College of Medical Care and Management, Taiwan

12955

*Evaluation of the Effects for the Implementation of the Service-Learning in Psychiatric Nursing Course*

Miao-Chuan Chen, Chang Gung University of Science and Technology, Taiwan

Chueh-Fen Lu, Chang Gung University of Science and Technology, Taiwan

Shu-Hung Chang, Chang Gung University of Science and Technology, Taiwan

9289

*An Adjustment of Returning Normalization: A Coping Process of Patients with Hypertension*

Shiah-Lian Chen, National Taichung University of Science and Technology, Taiwan

I-Chen Liao, Hungkuang University, Taiwan

8424

*Patients' Experiences of Hematopoietic Stem Cell Transplantation in Hospitalization*

Tienli Liang, Hungkuang University, Taiwan

Mei-Li Lee, Hungkuang University, Taiwan

I-Chen Liao, Hungkuang University, Taiwan

Kuan-Pin Lin, Hungkuang University, Taiwan



12:45 - 13:30

Lunch Break

12:45 - 13:30

**Japanese Calligraphy Workshop**

Art students from Kyoto's Ritsumeikan University will run a workshop for delegates to try the ancient art of Japanese Calligraphy. All are welcome. No reservations are required. Participants will receive a calligraphy brush as a souvenir.

S  
a  
t  
u  
r  
d  
a  
y

Saturday Session III: 13:30 - 15:00

Saturday Session III: 13:30 - 15:00  
ACP - Workshop

Room: 801

9415 - 13:30 - 15:00

*The Power of Looking Within*

Uma Shenoy, Children and Adult Psychological Services, USA

Saturday Session III: 13:30 - 15:00

Room: 802

ACP - Qualitative/Quantitative Research in any other area of Psychology

Session Chair: Marco Vassallo

9047 13:30 - 14:00

*Longitudinal factorial invariance of the Curiosity and Exploration Inventory-II (CEI-II)*

Shengquan Ye, City University of Hong Kong, Hong Kong

Ting Kin Ng, City University of Hong Kong, Hong Kong

Kin Hang Yim, City University of Hong Kong, Hong Kong

Jun Wang, City University of Hong Kong, Hong Kong

7358 14:00 - 14:30

*Numb to the World: Degradation Desensitization and Environmentally Responsible Behavior*

Alexandra C. Alhadeff, Yale University, USA

7753 14:30 - 15:00

*Should People from Different Groups Be Confused about the Distinction between Constructs, Is There Still Room for Structured Means?*

Marco Vassallo, Council for Agricultural Research and Economics (C.R.A.), Italy

Saturday Session III: 13:30 - 15:00

Room: 803

ACP - Linguistics, Language & Psychology/Behavioral Science

Session Chair: Kitiya Thassanabanjong

9523 13:30 - 14:00

*Examining Line Users' Behavior, Motivation, Attitudes and Factors Influencing Use and Adoption of Line Official Accounts in Thailand*

Palida Simasatitkul, National Chung Hsing University, Taiwan

Ying-Jiun Hsieh, National Chung Hsing University, Taiwan

10161 14:00 - 14:30

*Exploring the Relationship Between Job Satisfaction and Five Senses Horoscopes*

Wen-Shin Cheng, National Chung Hsing University, Taiwan

Chien-Ta Bruce Ho, National Chung Hsing University, Taiwan

11850 14:30 - 15:00

*Customer Behavior & Marketing Mix Factors as they Relate to the Selection of Thai Massage Providers*

Kitiya Thassanabanjong, Kasetsart University, Thailand



S  
a  
t  
u  
r  
d  
a  
y



**Saturday Session III: 13:30 - 15:00**

**Saturday Session III: 13:30 - 15:00**

**Room: 804**

**ACP - Psychology & Education**

**Session Chair: Robert Stroud**

9401 13:30 - 14:00

*Development and Validation of a Measure of Academic Self-Regulated Learning among Thai University Students and a Study of Invariance Across*

Sittipong Wattananonsakul, Srinakharinwirot University, Thailand

Pajaree Wangrungrakij, University of the Thai Chamber of Commerce, Thailand

11591 14:00 - 14:30

*Psychological Well-Being among Gifted Students at the National Gifted Center in Malaysia*

Noorlin Maaulot, PERMATApintar College, Malaysia

Roslina Ahmad Faisal, PERMATApintar College, Malaysia

Noriah Mohamad Ishak, PERMATApintar College, Malaysia

Nur Nadiyah Lani, PERMATApintar College, Malaysia

7977 14:30 - 15:00

*Learner Classroom Engagement: Definition, Measurement and Data Usage*

Robert Stroud, Kwansei Gakuin University, Japan



**Saturday Session III: 13:30 - 15:00**

**Room: 805**

**ACP - Mental Health**

**Session Chair: Muhammad Hafiz Bin Zainal Abidin**

4769 13:30 - 14:00

*It Was Humor That Kept Us Alive: Humor as a Defense Mechanism in the Holocaust*

Chaya Ostrower, Beit Berl College, Israel

8944 14:00 - 14:30

*Improving the Medical Team Cohesion after the Active Withdrawal of Life-Sustaining Treatments through a Psychological De-Briefing Intervention*

Wei-Chun Lin, Chi-Mei Medical Center Liouying, Taiwan

Tzu-Yu Huang, Chi-Mei Medical Center Liouying, Taiwan

Wen-Tzung Huang, Chi-Mei Medical Center Liouying, Taiwan

Shan-Wen Chen, Chi-Mei Medical Center Liouying, Taiwan

9380 14:30 - 15:00

*Empowering Students' Help-Seeking Behavior: Identification of Contextual Factors*

Muhammad Hafiz Bin Zainal Abidin, National Institute of Education, Singapore

Chong Wan Har, National Institute of Education, Singapore

**Saturday Session III: 13:30 - 15:00**

**Room: 806**

**ACP - General Psychology**

**Session Chair: Grand H. L. Cheng**

9282 13:30 - 14:00

*Measuring Forgiveness after Interpersonal Offense in Peer Relationship: Development and Psychometric Properties of the Peer Forgiveness Scale (PFS)*

Itsara Boonyarit, Chiang Mai University, Thailand

8863 14:00 - 14:30

*Consumer Guilt, Online Resale and Purchase Intention*

Hsunchi Chu, Commerce Development Research Institute, Taiwan

9207 14:30 - 15:00

*The Impact of Employability on Health, Career and Social Outcomes among Unemployed Youth: The Mediating Role of Perceived Upward Mobility*

Grand H. L. Cheng, Hong Kong Shue Yan University, Hong Kong

Darius K. S. Chan, The Chinese University of Hong Kong, Hong Kong

Winton W. T. Au, The Chinese University of Hong Kong, Hong Kong

S  
a  
t  
u  
r  
d  
a  
y

Saturday Session III: 13:30 - 15:00

Saturday Session III: 13:30 - 15:00  
ACERP - Comparative Ethics & Philosophy  
Session Chair: Xing-Chen Chia-Chi Lin

Room: 701

13012 13:30 - 14:00  
*Aristotle on the Nature of Friendship*  
Joseph Karuzis, Hokkaido University, Japan

8640 14:00 - 14:30  
*Arthur Schopenhauer and East: Compassion As the Basis of Ethics*  
Chinara Mammadova, Baku State University, Azerbaijan

8993 14:30 - 15:00  
*Differences of Marriage Strategy and Social Stratification Between Hokkien, Hakka and Non-Han in Tamsui and Taipei, Taiwan (1895-1945)*  
Xing-Chen Chia-Chi Lin, Tamkang University, Taiwan  
Ying-Chang Chuang, Academia Sincia, Taiwan

Saturday Session III: 13:30 - 14:30  
ACERP – Religion - Comparative Ethics  
Session Chair: Michael Friedman

Room: 702

12505 13:30 - 14:00  
*A Comparative Study on Conservative Judaism and Islamic Approaches to the Reconstruction of Religious Thought: Special Focus on Selected Issues*  
Adibah Abdul Rahim, International Islamic University Malaysia, Malaysia  
Noor Amali Mohd Daud, International Islamic University Malaysia, Malaysia

9572 14:00 - 14:30  
*Problematics of Appropriation in Jewish-Buddhist Encounter*  
Michael Friedman, Georgetown University, USA



S  
a  
t  
u  
r  
d  
a  
y

Saturday Poster Session III: 13:30 - 15:00

Room: 1008

8431

*Using Theory of Planned Behavior to Predict Women Intention to Regular Exercise During Pregnancy*

Ching-Fang Lee, Oriental Institute of Technology College, Taiwan

I-Chyun Chiang, Yuanpei University, Taiwan

Li-Kang Chi, National Taiwan Normal University, Taiwan

9108

*Tobacco and Alcohol Use During Pregnancy and Its Associated Factors in Sankhuwa- Sava District*

Ramesh Barakoti, B.P Koirala Institute of Health Sciences, Nepal

Anup Ghimire, B.P Koirala Institute of Health Sciences, Nepal

Dharanidhar Baral, B.P Koirala Institute of Health Sciences, Nepal

9113

*Study of Risk Taking Behaviors of Drivers in Eastern Nepal*

Samyog Uprety, B.P. Koirala Institute of Health Sciences, Nepal

Surya Raj Niraula, B.P.Koirala Institute of Health Sciences, Nepal

Masum Poudel, B.P.Koirala Institute of Health Sciences, Nepal

Dharanidhar Baral, B.P. Koirala Institute of Health Sciences, Nepal

Paras Kumar Pokheral, B.P.Koirala Institute of Health Sciences, Nepal

9258

*Personal and Environmental Factors Correlated with Sufficient Consumption Behavior of Students in Thailand and Malaysia*

Saran Pimthong, Behavioral Science Research Institute, Thailand

9308

*The Relationships Among Learning Support Needs, Self-Regulated Learning Strategies, Study Time and Test Scores in Learning Chinese*

Takamichi Ito, Kyoto University of Education, Japan

Song Wang, Kwansei Gakuin University, Japan

Hui Sun, Kwansei Gakuin University, Japan

9358

*Knowledge, Attitude and Practice to Visceral Leishmaniasis Among Marginalized Community of Endemic District of Eastern Nepal*

Dharanidhar Baral, BP Koirala Institute of Health Sciences, Nepal

Nisha Manandhar, BP Koirala Institute of Health Sciences, Nepal

9387

*Influence of Linguistic Experience on Early Cortical Processing of Frequency-Modulated Glides*

I-Hui Hsieh, National Central University, Taiwan

Wan-Ting Yeh, National Central University, Taiwan

Kourosh Saberi, University of California-Irvine, USA

9750

*Self-Efficacy, E-Learning and Online EFL Proficiency Test*

Michiko Toyama, Bunkyo University, Japan

9058

*Role of Executive Function Among Young Adults in Music and Non-Music Programs*

Hiranya Sirisumthum, Mahidol University, Thailand

Panadda Thanasetkorn, Mahidol University, Thailand

Nuanchan Chutabhakdikul, Mahidol University, Thailand

Vasunun Chumchua, Mahidol University, Thailand

9228

*Switching Task in Thai University Students in Music and Non-Music Program*

Tantiya Thitithumrongkul, Mahidol University, Thailand

Panadda Thanasetkorn, Mahidol University, Thailand

Nuanchan Chutabhakdikul, Mahidol University, Thailand

Vasunun Chumchua, Mahidol University, Thailand

9418

*The Effect of Equine-Assisted Therapy on Visual-Motor Integration in Adolescent Autism Spectrum Disorders*

Paranan Chorachit, Mahidol University, Thailand

Panadda Thanasetkorn, Mahidol University, Thailand

Nootchanart Ruksri, Mahidol University, Thailand

Kannika Permpoonpattana, Mahidol University, Thailand

Vasunun Chumchua, Mahidol University, Thailand



S  
a  
t  
u  
r  
d  
a  
y

Saturday Poster Session III: 13:30 - 15:00

Room: 1008

8585

*Rnfl1/2 Deficiency Results in Impairment of Brain Functions*

Yi-Chao Lee, Taipei Medical University, Taiwan

Ping-Chieh Pao, Taipei Medical University, Taiwan

Jen-Hui Tsou, Taipei Medical University, Taiwan

Ying-Chen Yang, National Ilan University, Taiwan

Wen-Chang Chang, Taipei Medical University, Taiwan

12802

*The Relationship Between Over-Adaptation Towards Peers, Psychological Stress, and School Adjustment in Japanese Junior High School Students.*

Junki Kazama, Nagoya University, Japan

Kenji Hiraishi, Nagoya University, Japan

9730

*Related Factor of Mothers and Fathers Beliefs About Infant Crying*

Chien-Chi Liu, HungKuang University, Taiwan

Ming-Cheng Lin, Central Taiwan University of Science and Technology, Taiwan

Yueh-Chih Chen, HungKuang University, Taiwan

Tsai-Hsiu Chang, HungKuang University, Taiwan

8420

*A Latent Trait-State-Occasion (TSO) Model of the Beck Anxiety Inventory*

Pei-Chen Wu, National PingTung University, Taiwan

8706

*The Influences of Nationalism, Patriotism and Social Dominance Orientation (SDO) on Prejudice against Foreigners in Japan*

Maho Aikawa, Minami-Rokugo Fukushien, Japan

Kerry S. Kleyman, Metropolitan State University, USA

15:00 - 15:15

Coffee Break



S  
a  
t  
u  
r  
d  
a  
y



**Saturday Session IV: 15:15 - 16:45**

**Saturday Session IV: 15:15 - 16:45**

**Room: 801**

**ACP - Workshop**

**Session Chair: Siuman Raymond Ting**

7394 15:15 - 16:45

*Risk Management and Counseling Chinese Students and Scholars in United States*  
Siuman Raymond Ting, North Carolina State University, USA

**Saturday Session IV: 15:15 - 16:45**

**Room: 802**

**ACP - Qualitative/Quantitative Research in any other area of Psychology**

**Session Chair: Li-Fen Chao**

9267 15:15 - 15:45

*The Effect of Safe Practice Management on Reducing Medication Administration Interruptions of Registered Nurses in Taiwan*  
Hui-Chu Yu, National Taiwan University Hospital, Taiwan  
Hsin-Yun Liu, National Taiwan University Hospital, Taiwan  
Lian-Hua Huang, National Taiwan University Hospital, Taiwan  
Ya-Ling Lee, National Taiwan University, Taiwan  
Tsuey-Yuan Huang, Chang Gung University of Science and Technology, Taiwan

9086 15:45 - 16:15

*Academic Adjustment and Sense of Coherence of the Muslim Students from the Three Southernmost Provinces of Thailand: Qualitative Research*  
Maithai Chaiyapan, Songkhla Rajabhat University, Thailand

9241 16:15 - 16:45

*Caring Experiences of Intraoperative Radiotherapy in the Treatment of Breast Cancer: A Preliminary Case Report*  
Li-Fen Chao, Chang Gung University of Science and Technology, Taiwan  
Hung-Bun Lam, Mackay Memorial Hospital, Taiwan



S  
a  
t  
u  
r  
d  
a  
y

**Saturday Session IV: 15:15 - 16:45**

**Saturday Session IV: 15:15 - 16:45**

**Room: 804**

**ACP - Psychology & Education**

**Session Chair: Jerome Shih**

9051 15:15 - 15:45

*How Important is Empowering High School Students' Self-Concept?*

Joana Novaes Machado Stocker, Zayed University, UAE

9414 15:45 - 16:15

*The Study of the International Undergraduate Students' Adjustment Processes in Taiwan*

Chia-Chen Ho, Sih-Wei Primary School, Taiwan

6871 16:15 - 16:45

*Teaching Assertiveness to International Students in the United States*

Jerome Shih, University of Minnesota, USA



**Saturday Session IV: 15:15 - 16:45**

**Room: 805**

**ACP - Industrial Organization & Organizational Theory**

**Session Chair: Natalia Antonova**

8412 15:15 - 15:45

*The Employee Outcomes of Workplace Favoritism in Turkish Public Sector*

Mehmet Ferhat Özbek, Gumushane University, Turkey

Sara J. Roberts, University of Nebraska, USA

8278 15:45 - 16:15

*The Effects of Perceived Stakeholder Importance on Organizational Commitment: The Mediating Effect of Employees' Perception of Corporate Social Responsibility*

Hung-Yu Tsai, National Sun Yat-sen University, Taiwan

9446 16:15 - 16:45

*Internal Image of the Organization and Commitment of Employees*

Natalia Antonova, National Research University Higher School of Economics, Russia

**Saturday Session IV: 15:15 - 16:15**

**Room: 806**

**ACP - Community Development**

**Session Chair: Nurul Azmawati Mohamed**

12567 15:15 - 15:45

*Development of Food and Personal Hygiene Educational Programme for Food Handlers*

Shalinawati Ramli, Universiti Sains Islam Malaysia, Malaysia

Nurul Azmawati Mohamed, Universiti Sains Islam Malaysia, Malaysia

12533 15:45 - 16:15

*Cultivating Adherence to Hand Hygiene Practice*

Nurul Azmawati Mohamed, Universiti Sains Islam Malaysia, Malaysia

Shalinawati Ramli, Universiti Sains Islam Malaysia, Malaysia

Nur Natasha Zulkefli Amin, Universiti Sains Islam Malaysia, Malaysia

S  
a  
t  
u  
r  
d  
a  
y

Saturday Session IV: 15:15 - 16:45

Saturday Session IV: 15:15 - 16:45

Room: 701

ACERP - Philosophy

Session Chair: Wen-Shu Huang

9812 15:15 - 15:45

*Labyrinths of Power: Authorship, Authority and Ethics in J.M. Coetzee*

Claire Heaney, Queen's University Belfast, UK

11636 15:45 - 16:15

*Content, Embodiment and Aesthetic Force*

York H. Gunther, Mahidol University International College, Thailand

12239 16:15 - 16:45

*Absorption and Application of Confucians on Education Concept of Yangming Philosophy in Late Qing Dynasty*

Wen-Shu Huang, Shu-Te University, Taiwan

Saturday Session IV: 15:15 - 16:45

Room: 702

ACERP - Ethics - Business & Management Ethics

Session Chair: Merle Rihma

9434 15:15 - 15:45

*Determinants of Software Piracy Attitude, Intention and Behavior in Lebanon: Do Professionals and Students See Things Differently?*

Omar Khalil, Kuwait University, Kuwait

Ahmed Selim, Alexandria University, Egypt

12161 15:45 - 16:15

*Linking Sprituality and Ethics: Glimpses of 'Spiritual Integrity' from Ancient Indian Literature*

Rakesh Kumar Agrawal, Indian Institute of Management Kashipur, India

12009 16:15 - 16:45

*A New Approach to Ethics Audit: Assessing of Corporate Social Responsibility and Preventing Ethical Risks*

Merle Rihma, Tallinn Health Care College, Estonia

Mari Meel, Tallinn University of Technology Estonia

Anu Leppiman, Tallinn University of Technology, Estonia

Mari Kooskora, Estonian Business School, Estonia



S  
a  
t  
u  
r  
d  
a  
y

Saturday Poster Session IV: 15:15 - 16:45

Room: 1008



S  
a  
t  
u  
r  
d  
a  
y

8828

*Utilizing Implicit Association Test to Evaluate the Effect of Attitude on Information Processing*

Pei-Jung Lin, National Taiwan University, Taiwan

Ying-Chun Cho, National Taiwan Normal University, Taiwan

Ting-Kuang Yeh, National Taiwan Normal University, Taiwan

12297

*Comparison of Brief Interventions for Older Adults with Type 2 Diabetes: Positive Reappraisal, Cognitive Restructuring and Supportive Counselling*

Jamie Nowlan, Macquarie University, Australia

Viviana Wuthrich, Macquarie University, Australia

Ron Rapee, Macquarie University, Australia

9092

*The Relationship Between Effortful Control and Parentings: A Cross-Lagged Panel Analysis*

Kung-Yu Hsu, Naitonal Chung-Cheng University, Taiwan

Keng-Ling Lay, Naitonal Chung-Cheng University, Taiwan

Jen-Fei Kung, Naitonal Chung-Cheng University, Taiwan

Sylvia Lin, Naitonal Chung-Cheng University, Taiwan

9131

*How Intrinsic and Extrinsic Motivations Predict College Students' Academic Performance in Different Cultures*

Hui-Min Lin, National Sun Yat-sen University, Taiwan

Wen Cheng, National Sun Yat-sen University, Taiwan

9547

*Sex Difference in Contextual Effect*

Wei-Lun Chou, Fo Guang University, Taiwan

9312

*Attempt of Social Skills Training for Act of Awareness From Swiss Cheese Flow Experience Game*

Emiko Yamamoto, Okayama University, Japan

Tomoko Tanaka, Okayama University, Japan

Yoshimi Hyodo, Okayama University, Japan

Harumi Katayama, Hamamatsu University School of Medicine, Japan

Yumie Kuwabara, Hamamatsu University Hospital, Japan

9320

*Intervention of Reciprocal Teaching in the Elementary Mathematics Classroom*

Takeshi Machi, Higashi-Chofu Daiichi Elementary School, Japan

Motoyuki Nakaya, Nagoya University, Japan

9336

*Mechanisms of Adolescents Aggression toward Their Parents*

Norimasa Itakura, Gifu University, Japan

9371

*Correlation between Emotional Competence and Behavioral Problems in Elementary School Students with ADHD*

Chih-lan Chang, National Kaohsiung Normal University, Taiwan

Shi-Sen Shyu, National Kaohsiung Normal University, Taiwan

Yuan-Yu Ting, National Kaohsiung Normal University, Taiwan

9494

*Personality Traits in Discordant Monozygotic Twins for Sport Performance*

Enji Okuda, Shiga University, Japan

Aiko Okuda, Biwakogakuin University, Japan

Daisuke Horii, Osaka Electro-Communication University, Japan

Hiratoshi Kaneda, Osaka Electro-Communication University, Japan

9664

*Subjective Well-Being and Learning Behavior among School Students in Thailand*

Usa Srijindarat, Srinakharinwirot University, Thailand



**Saturday Poster Session IV: 15:15 - 16:45**  
**Room: 1008**

8725

*A Tough Journey: The Experience of Weight Loss among Early Adulthood Students*  
Kuan-Pin Lin, HungKuang University, Taiwan

8746

*A Systematic Review and Meta-Analysis of the Effect of Massage on Hypertension*  
I-Chen Liao, Taipei Medical University, Taiwan  
Shiah-Lian Chen, National Taichung University of Science and Technology, Taiwan  
Mei-Yeh Wang, Cardinal Tien Junior College of Healthcare and Management, Taiwan  
Pei-Shan Tsai, Taipei Medical University, Taiwan

8583

*Structure of Time Orientation in Adolescents*  
Ryo Ishii, Nagoya University, Japan

16:45 - 17:00  
Coffee Break

**Saturday Featured Presentation: 17:00 - 17:45**  
**Room: 1008**

*The Effects of Family Support on Depression among Disabled Asian Elders in the United States: 2010-2014*  
James W. McNally, University of Michigan, USA



S  
a  
t  
u  
r  
d  
a  
y





Sunday  
日曜日

Sunday Session I: 9:00 - 10:30

Sunday Session I: 9:00 - 10:30  
ACP - Workshop

Room: 801

9540 9:00 - 10:30

*Customer Satisfaction and Loyalty Measurement for Top 10 Internet Companies in the World: Data Envelopment Analysis*  
Hung-Yu Yen, National Chung Hsing University, Taiwan  
Chien-Ta Ho, National Chung Hsing University, Taiwan

Sunday Session I: 9:00 - 10:30

Room: 802

ACP - Qualitative/Quantitative Research in any other area of Psychology

Session Chair: Andy Reilly

7952 9:00 - 9:30

*"Living within a Broken Vow": The Impact of Parental Infidelity among Late Adolescents in Establishing Romantic Relationships*  
Francine Rose A. de Castro, University of the East, Philippines  
Matt Barrameda, University of the East, Philippines  
Matt Dadvivas, University of the East, Philippines  
Aily San Jos, University of the East, Philippines  
Ellaine Panganiban, University of the East, Philippines

9798 9:30 - 10:00

*Determinants of Individual's Intention in Sina Weibo: A Uses and Gratifications Perspective*  
Cheng-Yu Lai, Chung Yuan Christian University, Taiwan

6397 10:00 - 10:30

*Sexual Position Identity and Power among Gay Men*  
Andy Reilly, University of Hawai'i, USA

Sunday Session I: 9:00 - 10:30

Room: 803

ACP - Linguistics, Language & Psychology/Behavioral Science

Session Chair: Chao-Hsiang Yang

8778 9:00 - 9:30

*Factors Influencing the Technology Adoption of Mobile Commerce in Taiwan by Using the Revised UTAUT Model*  
Ting-Yu Li, National Chung Hsing University, Taiwan  
Chien-Ta Bruce Ho, National Chung Hsing University, Taiwan

8771 9:30 - 10:00

*A Kansei Engineering Approach to Evaluate Consumer Perception on Social Media: A Case Study of Giant Manufacturing Company*  
Ming-Bao Lin, National Chung-Hsing University, Taiwan  
Juite Wang, National Chung-Hsing University, Taiwan

8818 10:00 - 10:30

*A Study on Behavior Intention to Use Live Streaming Video Platform Based on Tam Model*  
Chao-Hsiang Yang, National Chung Hsing University, Taiwan  
Chien-Ta Bruce Ho, National Chung Hsing University, Taiwan



S  
u  
n  
d  
a  
y



**Sunday Session I: 9:00 - 10:30**

**Sunday Session I: 9:00 - 10:30**  
**ACP - General Psychology**  
**Session Chair: Sujinda Popaitoon**

**Room: 804**

6122      9:00 - 9:30  
*Feeling of Surprise may be a Sign of Wisdom*  
Chao Hu, University of Toronto, Canada  
Qiandong Wang, Zhejiang Normal University, China  
Michel Ferrari, University of Toronto, Canada  
Earl Woodruff, University of Toronto, Canada  
Genyue Fu, Zhejiang Normal University, China

11711      9:30 - 10:00  
*Marital Commitment in Taaruf Couples*  
Yudiana Ratnasari, University of Indonesia, Indonesia

12496      10:00 - 10:30  
*Effects of Intrinsic and Extrinsic Motivation on Knowledge Absorptive Capacity and Project Performance in the Short and Long Run*  
Sujinda Popaitoon, Mahasarakham Business School, Thailand

**Sunday Session I: 9:00 - 10:30**  
**ACP - Mental Health**  
**Session Chair: Phatane Srioat**

**Room: 805**

9222      9:00 - 9:30  
*Empowering the Families of Persons with Schizophrenia: A Psychiatric Social Work Approach in Indian Context*  
V. Kannappa Setty, National Institute of Mental Health and Neuro Sciences, India  
N. Janardhana, National Institute of Mental Health and Neuro Sciences, India  
Suresh Bada Math, National Institute of Mental Health and Neuro Sciences, India  
P. Marimuthu, National Institute of Mental Health and Neuro Sciences, India

9293      9:30 - 10:00  
*A Study of Using Muscle Relaxation and Music on Aggressive Behaviors of Schizophrenic Patients, Sakaeo Rajanakarindra Psychiatric Hospital.*  
Phongphan Phawo, Burapha University, Thailand

9721      10:00 - 10:30  
*Violence towards other Family Members by Patients with Alcoholism and Schizophrenia*  
Phatane Srioat, Boromarajonani College of Nursing, Thailand

**Sunday Session I: 9:00 - 10:30**  
**ACERP - Ethics & Globalization**  
**Session Chair: Alessandra Sarquis**

**Room: 806**

8040      9:00 - 9:30  
*Labour Economic Value and Bargaining Power: Moral Progress as a Fight against Dialectical Equivalences*  
Domenico Cortese, University of Dundee, UK

9466      9:30 - 10:00  
*Power, Trade, Wall Street Ethics, and Asymmetric Information*  
Koushik Ghosh, Central Washington University, USA  
Dipankar Purkayastha, California State University - Fullerton, USA

12750      10:00 - 10:30  
*Moral Agency in Global Practices of Responsibility: Assessing UN Humanitarian Assistance Mission for Iraq (UNAMI)*  
Alessandra Sarquis, Université Paris IV, France



S  
u  
n  
d  
a  
y

Sunday Session I: 9:00 - 10:30

Sunday Session I: 9:00 - 10:00  
ACERP - Philosophy & Education  
Session Chair: Sarah Shea

Room: 701

7974 9:00 - 9:30

*'To Give is to Receive.' The Merits of Ka-Upod: An Investment with Bountiful Gains*  
Ray Anthony C. Bofill, University of Santo Tomas, Philippines

9578 9:30 - 10:00

*Listening to the Powerless Religious Education for Adults with Severely Intellectual Disabilities: A Case Study*  
Sarah Shea, China Graduate School of Theology, Hong Kong



10:30 - 10:45  
Coffee Break

S  
u  
n  
d  
a  
y

Sunday Session II: 10:45 - 12:15

Sunday Session II: 10:45 - 12:15

Room: 801

ACP - Qualitative/Quantitative Research in any other area of Psychology

Session Chair: Jung-Tsun Liu

10674 10:45 - 11:15

*Investor Sentiment, Traders' Behavior and Price Efficiency in Crude Oil Futures Markets*

Yu-Lun Chen, Chung Yuan Christian University, Taiwan

12093 11:15 - 11:45

*Simulation of a Queuing System Case Study: Call Center Service in a Organization*

Rutcharin Kullachart, Kasetsart University, Thailand

12498 11:45 - 12:15

*The Risks of Purchasing Superficies Right-Based Housing: The Perspective of Consumer Protection*

Jung-Tsun Liu, Chang Jung Christian University, Taiwan

Sunday Session II: 10:45 - 12:15

Room: 802

ACP - Linguistics, Language & Psychology/Behavioral Science

Session Chair: Shou-Chi Chang

8856 10:45 - 11:15

*Improving Customers Satisfaction to the Development of User Interface Design for Mobile Shopping through QFD*

Chih-Yin Liu, National Chung Hsing University, Taiwan

Jung-Yu Lai, National Chung Hsing University, Taiwan

9049 11:15 - 11:45

*Does Sociality Become Virtual or Natural in Social Network Services? The Example of Facebook*

Jian-Jia Hsieh, National Chung Hsing University, Taiwan

Ying-Jiun Hsieh, National Chung Hsing University, Taiwan

Lan-Ying Huang, National Changhua University of Education, Taiwan

9143 11:45 - 12:15

*Exploring Consumers' Intention to Accept Smartwatch*

Shou-Chi Chang, National Chung Hsing University, Taiwan

Liang-Chuan Wu, National Chung Hsing University, Taiwan

Sunday Session II: 10:45 - 12:15

Room: 803

ACP - Psychology & Education

Session Chair: Michał Gacek

5905 10:45 - 11:15

*Can Supervision Prevent Burnout in Staff Working with Children at Risk?*

Camilla Lauritzen, UiT - Arctic University of Norway, Norway

6679 11:15 - 11:45

*I am for ADHD: An Exploration in the Lives of and its Effects in Children with ADHD*

Francine Rose A. de Castro, University of the East, Philippines

7601 11:45 - 12:15

*Consequences and Recognition of the Cognitive Exhaustion State in Persons with Mild Intellectual Disability*

Michał Gacek, Pedagogical University, Poland



S  
u  
n  
d  
a  
y

Sunday Session II: 10:45 - 12:15

Sunday Session II: 10:45 - 12:15

Room: 804

ACP - Mental Health

Session Chair: Francesco Pagnini

8599 10:45 - 11:15

*The Impact of Forgiveness and Unforgiveness on Mental Well-Being: A Qualitative Study*  
Sadaf Akhtar, University of Warwick, UK

11572 11:15 - 11:45

*Mindfulness as a Protective Factor for the Burden of Caregivers of Amyotrophic Lateral Sclerosis Patients*  
Colin M. Bosma, Harvard University, USA  
Francesco Pagnini, Harvard University, USA  
Deborah Phillips, Harvard University, USA  
Andrew Reece, Harvard University, USA  
Ellen Langer, Harvard University, USA

11608 11:45 - 12:15

*On Mindfulness and Meditation*  
Francesco Pagnini, Harvard University, USA  
Deborah Phillips, Harvard University, USA



S  
u  
n  
d  
a  
y

Sunday Session II: 10:45 - 12:15

Room: 805

ACERP - Philosophy & Religion

Session Chair: Sara Elaine Neswald

9820 10:45 - 11:15

*Nature of Knowledge and Knowledge of Nature in Islam*  
Cagdas Dedeoglu, Istanbul Arel University, Turkey

12023 11:15 - 11:45

*Metaphysical Foundation of Mencius's Political Theory*  
Hala Aboufouth, Cairo University, Egypt

12306 11:45 - 12:15

*Sublimation of Place & Space in Daoist Self-Immortalization Practices*  
Sara Elaine Neswald, Soochow University, Taiwan

Sunday Session II: 10:45 - 11:45

Room: 806

ACERP - Theism & Atheism

Session Chair: Pui Shum Ip

8051 10:45 - 11:15

*'Secular Japan' as Ideology*  
Emils Larsson, Uppsala University, Sweden

9361 11:15 - 11:45

*Pontius Pilate as an Embodiment of State Power*  
Pui Shum Ip, China Graduate School of Theology, Hong Kong



Sunday Session II: 10:45 - 12:15

Sunday Session II: 10:45 - 12:15 Room: 701  
ACP - Linguistics, Language & Psychology / Behavioral Science  
Session Chair: Roma Angelica P. Victoriano

9050 10:45 - 11:15  
*The Capacity of Perceived Coping Self-Efficacy in Adolescents with Repaired Cleft Lip and Cleft Palate.*  
Jutharat Chimruang, Naresuan University, Thailand

8467 11:15 - 11:45  
*A Phenomenological Study on How Cosplay Affects the Self-Presentation of Cosplayers*  
Dior Grita F. De Torres, Lyceum of the Philippines University - Batangas, Philippines  
Roma Angelica P. Victoriano, Lyceum of the Philippines University - Batangas, Philippines

11201 11:45 - 12:15  
*Verticality of Space in Japanese and English with Image-Schema in Cognitive Linguistics*  
Tae Kunisawa, The University of New Mexico, USA

Sunday Poster Session I: 10:45 - 12:15  
Room: 1008

7706  
*Experiences of University Senior Students in Taiwan*  
Yii-Nii Lin, National Tsing Hua University, Taiwan  
Yi-Hsing Claire Chiu, Hsuan Chuang University, Taiwan

8685  
*Promoting Gerotranscendence by Enriching Elder Personscativity: An Idea for MDSW Teaching Strategy*  
Jia-Mi Chen, National Taitung University, Taiwan

6933  
*Happiness as Perceived by Indonesian and German Adolescents*  
Orysa Noor Azizah, Universitas Gadjah Mada, Indonesia  
Sulasmi Sudirman, Universitas Gadjah Mada, Indonesia  
Kwartarini Wahyu Yuniarti, Universitas Gadjah Mada, Indonesia

10958  
*The Power of Active Aging in Italy: What Sardinian Elders Teach Us About Mental Health*  
Maria Chiara Fastame, University of Cagliari, Italy  
Paul Kenneth Hitchcott, Southampton Solent University, UK  
Maria Pietronilla Penna, University of Cagliari, Italy

11523  
*The Prevalence and Characteristics Associated with Depression among Working Urban Poor Adults in Selangor, Peninsular Malaysia*  
Kok Leong Tan, International Medical University, Malaysia

12138  
*Moderating Impact of Culture on Interpersonal Style: Dependency and Detachment in Korean and American Adults*  
June Lee Kwon, Adelphi University, USA  
Robert F. Bornstein, Adelphi University, USA

12544  
*Models Predicting Adolescents' Mental Health : Considering Self-Esteem, Sense of Hope, Social Support and Life Stress*  
Shu-Yu Wu, National Taiwan Normal University, Taiwan  
Li-Chou Chen, National Taiwan Normal University, Taiwan

8164  
*Effects of Perfectionism and Self-Esteem on Strength-Related Self-Efficacy*  
Yuko Matsuda, Hirotsuki University, Japan

12:15 - 13:00  
Lunch Break



S  
u  
n  
d  
a  
y

Sunday Session III: 13:00 - 14:30

**Sunday Session III: 13:00 - 14:00** **Room: 801**  
**ACERP - Interdisciplinary - Topics in Religion**  
**Session Chair: Rocky Barua**

10803 13:00 - 13:30  
*Anti-Scientism and Its Impact on the Relationship between Science and Religion*  
 Mohammed Almisbkawy, Fayoum University, Egypt

6373 13:30 - 14:00  
*A Buddhist Approach to Spiritual Value and Modern Education System*  
 Rocky Barua, Mahamakut Buddhist University, Thailand

~~12118 14:00 - 14:30 (Cancelled)~~  
~~*Hindu Civilization and Culture in Nepal*~~  
~~Hari Dhakal, Gaulochan International, Nepal~~

**Sunday Session III: 13:00 - 14:00** **Room: 802**  
**ACERP - Comparative Philosophy**  
**Session Chair: Qingjuan Sun**

9696 13:00 - 13:30  
*The Cause and Content of Emotion in James and Prinz*  
 York H. Gunther, Mahidol University International College, Thailand

7585 13:30 - 14:00  
*Wu Xing's "Generation of Virtuosity": Two Approaches*  
 Qingjuan Sun, Nanyang Technological University, Singapore

**Sunday Session III: 13:00 - 14:30** **Room: 803**  
**ACP - Industrial Organization & Organization Theory**  
**Session Chair: Patchara Popaitoon**

9204 13:00 - 13:30  
*Preference for Status and Power, Unconscious Motivation Orientation, and Implicit Self-Esteem*  
 Takuto Shishido, Musashino University, Japan  
 Ken Okura, Shujitsu University, Japan

12129 13:30 - 14:00  
*How Are Changes In Exposure to Job Demands and Resources Related to Employees' Well-Being*  
 Qiao Hu, Zhejiang University of Technology, China  
 Wilmar B. Schaufeli, Utrecht University, Netherlands  
 Toon W. Taris, Utrecht University, Netherlands

11197 14:00 - 14:30  
*Factors Influencing Thai IT Professionals to Work in ASEAN Countries*  
 Patchara Popaitoon, Chulalongkorn Business School, Thailand  
 Yingyos Theerataweewut, Chulalongkorn Business School, Thailand



S  
u  
n  
d  
a  
y

**Sunday Session III: 13:00 - 14:30**

**Sunday Session III: 13:00 - 14:30**  
**ACP - Psychology & Education**  
**Session Chair: Takuma Nishimura**

**Room: 804**

12164 13:00 - 13:30

*The Effect of Parental Bonding on Learning Strategies with the Mediation Effects of Achievement Emotions and Achievement Goals among Chinese*

Man-Tak Leung, Hong Kong Shue Yan University, Hong Kong

Choi-Yin Jane So, Hong Kong Shue Yan University, Hong Kong

13019 13:30 - 14:00

*Communication of Parents-Children: Description of Actual, Ideal and Discrepancy Communication for Late Adolescent in Bali*

Ni Putu Natalya, Udayana University, Indonesia

Made Diah Lestari, Udayana University, Indonesia

12931 14:00 - 14:30

*What Are the Differences in Learning Environments of Elementary and Junior High School in Japan ?*

Takuma Nishimura, The University of Tokyo, Japan

**Sunday Session III: 13:00 - 14:00**  
**ACERP - General Philosophy**  
**Session Chair: Andrew Garas**

**Room: 805**

12585 13:00 - 13:30

*Art Therapy in Providing Positive Impact as an Effort to Improve the Quality of Ego Integrity for Elderly People*

Elisa, Tarumanagara University, Indonesia

Monty P. Satiadarma, Tarumanagara University, Indonesia

Untung Subroto, Tarumanagara University, Indonesia

7363 13:30 - 14:00

*The Effect of Post-Learning Caffeine Consumption on the Learning and Retrieval of Non-Verbal Stimuli*

Andrew Garas, Bond University, Australia

Mark Bahr, Bond University, Australia

**Sunday Session III: 13:00 - 14:30**  
**ACP - Panel Session**  
**Session Chair: Yun Hsuan Chou**

**Room: 806**

8987

*A Latent Trait Adjustment Procedure for a Test that Contains Multiple DIF Items*

Chi-Chen Chen, National Sun Yat-Sen University, Taiwan

Chung-Ping Cheng, National Cheng Kung University, Taiwan

Ching-Lin Shih, National Sun Yat-Sen University, Taiwan

9013

*Applying Double Purification Procedure for Differential Item Functioning on Large Scale Assessments*

Bo-Sien Hu, National Tsing Hua University, Taiwan

Cheng-Te Chen, National Tsing Hua University, Taiwan

9682

*Assessing Differential Facet Functioning in the Measurement of Adults' Scientific Literacy*

Guo-Wei Sun, National Sun-Yat-Sen University, Taiwan

Cheng-Te Chen, National Tsing Hua University, Taiwan

Tai-Chu Huang, National Sun Yat-Sen University, Taiwan

Ching-Lin Shih, National Sun-Yat-Sen University, Taiwan

9283

*DIF Detection through Simultaneous Logistic Regression*

Yun Hsuan Chou, National Cheng Kung University, Taiwan

Ching-Lin Shih, National Sun Yat-Sen University, Taiwan

Chung-Ping Cheng, National Cheng Kung University, Taiwan



S  
u  
n  
d  
a  
y

14:30 - 14:45  
Coffee Break

**Sunday Featured Presentation: 14:45 - 15:15**  
**Room: 1008**

*The Lucifer Effect in Indonesian Educational Settings (Impact of Situational Attribution, Obedience and Modelling)*  
Monty P. Satiadarma, Clinical Psychologist and Former Rector, Tarumanagara University, Indonesia

**Closing Session**  
**15:15 - 15:40**

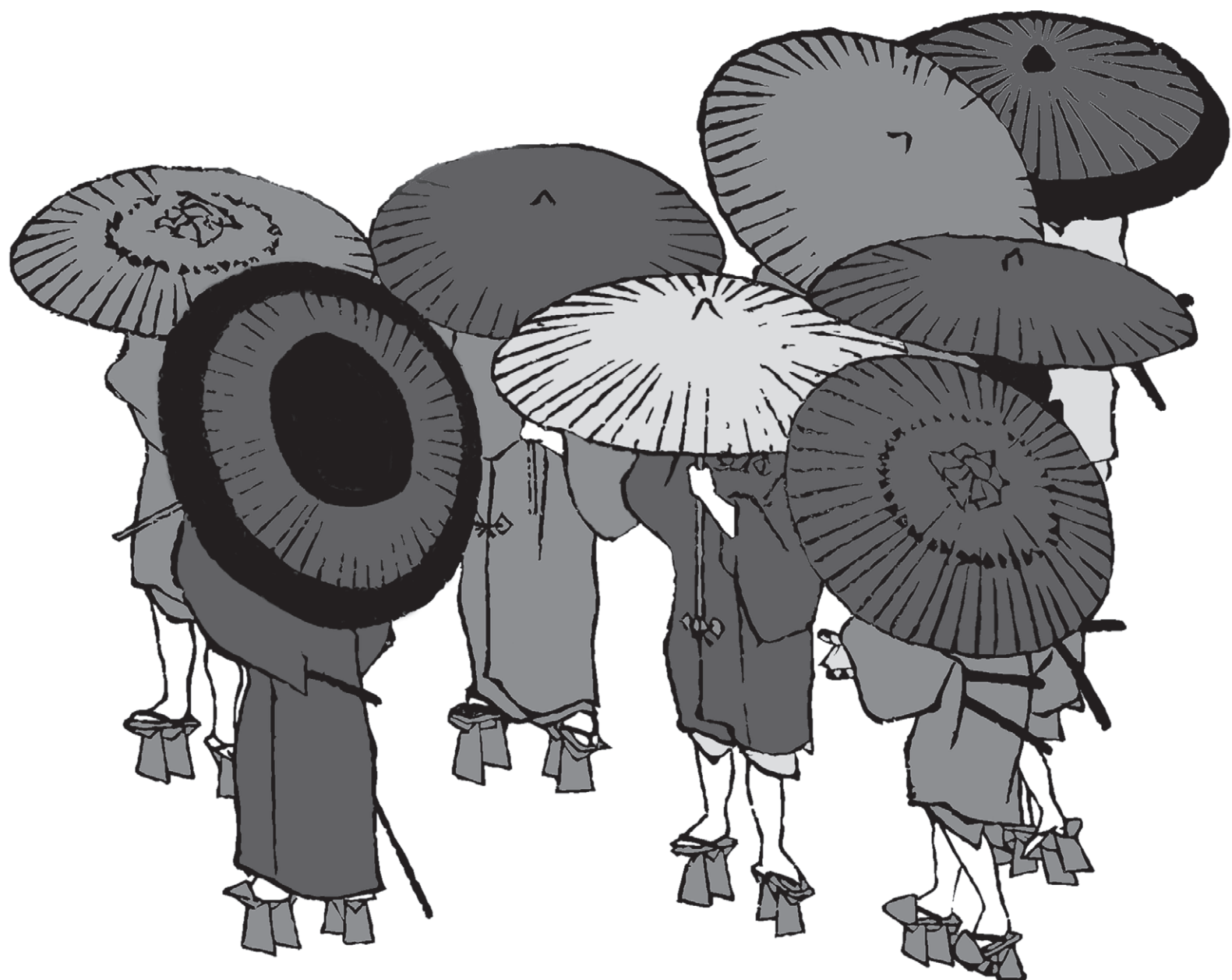
Closing remarks from Professor Stuart D. B. Picken, Chairman of IAFOR.



S  
u  
n  
d  
a  
y



# Virtual



## Virtual Presentations

9517

*Ethics in Hong Kong's Graduate Labor Market*

Mike Kan, The Hong Kong Polytechnic University, Hong Kong

9260

*Development and Validation of Quarterlife Crisis Scale for Filipinos*

James Philip Ray Vasquez Pinggolio, De La Salle University-Dasmariñas, Philippines

12675

*Investigating the Evaluative Dimensions of a Large Set of Communicative Facial Expressions: A Comparison of Lab-Based and Crowd-Sourced Data Collection*

Dilara Derya, Korea University, South Korea

Ahyoung Shin, Korea University, South Korea

Haenah Lee, Korea University, South Korea

Christian Wallraven, Korea University, South Korea

13073

*Teachers-Students through the Formation in Parfor, Dialogues and Movements of Their Selves*

Ivonete Barreto de Amorim, Universidade Católica do Salvador, Brazil

Elaine Pedreira Rabinovich, Universidade Católica do Salvador, Brazil

11988

*Functional Intergration between the Salience and Central Executive Networks: A Role for Action Video Game Experience*

Diankun Gong, University of Electronic Science and Technology of China, China

11035

*Power: An Advertisement and an Archetype*

Stefania Katapodi, University of Reading, UK

8704

*From Cogito Ergo Sum to Loquer Ergo Cogito*

Camille Rault, Bond University, Australia

12891

*Stockholm Syndrome in Dating Women*

Trida Cynthia, University of Gunadarma, Indonesia

Anita Zulkaida, University of Gunadarma, Indonesia

Retnaningsih, University of Gunadarma, Indonesia

9369

*Modern Forms of University Students' Extremist Behavior Depending on Cultural and Environmental Factors*

Emma I. Meshcheryakova, National Research Tomsk State University, Russia

Natalia V. Kozlova, National Research Tomsk State University, Russia

Inna V. Atamanova, National Research Tomsk State University, Russia

Anastasia V. Larionova, National Research Tomsk State University, Russia

9593 (Moved to Friday)

*Comparative Perception between Children and Adolescents on Their Relationship to Their Parents*

Samsunuwiati Marat, Tarumanagara University, Indonesia

Efi Fitriana, Padjadjaran University, Indonesia

9753

*How to Handle the Risks of Artificial Life: A Balance of Power between Ethics and Science*

Erik Persson, Lund University, Sweden

9842

*Chaos, Pluralism, And Allowing Difference in the Zhuangzi*

Paul Michael Turner, DePaul University, USA



V  
i  
r  
t  
u  
a  
l



Virtual presentations are online video presentations of papers.  
They can be viewed during and after the conference at [iafor.org/virtuals](http://iafor.org/virtuals)

# Index



## A-Z Index of Authors

Abas, Nurul	9667	p. 9	Chen, Yi-Fang	12639	p. 6
Abdul Rahim, Adibah	12505	p. 26	Chen, Yu-Lun	10674	p. 39
Abidin, Mohd Hakimie Zainal	12469	p. 4	Chen, Yueh-Chih	9730	p. 28
Abidin, Muhammad Hafiz Bin Zainal	9380	p. 25	Cheng, Chung-Ping	8987	p. 43
Aboulfoutoh, Hala	12023	p. 40	Cheng, Chung-Ping	9283	p. 43
Adam, Leeyana	9662	p. 15	Cheng, Grand H. L.	9207	p. 25
Agrawal, Rakesh Kumar	12161	p. 31	Cheng, Wen	9131	p. 32
Ahmad, Mahadir	9662	p. 15	Cheng, Wen-Shin	10161	p. 24
Ahmad, Mahadir	10559	p. 4	Cheong, Chongcheul	13241	p. 11
Ahmed, Pervaiz K	12853	p. 20	Chi, Li-Kang	8431	p. 27
Aikawa, Maho	8706	p. 28	Chiang, I-Chyun	8431	p. 27
Akhtar, Sadaf	8599	p. 40	Chien, Nai-Hui	12945	p. 23
Alhadeff, Alexandra C.	7358	p. 24	Chimruang, Jutharat	9050	p. 41
Almisbkawy, Mohammed	10803	p. 42	Chiu, Min-Chieh	12238	p. 19
Alshehri, Norah Bint Abdullah Bin Muteb	6861	p. 17	Chiu, Yi-Hsing Claire	7706	p. 41
Amar, Moty	7635	p. 18	Cho, Wonsup	9655	p. 9
Amin, Nur Natasha Zulkefli	12533	p. 30	Cho, Ying-Chun	8828	p. 32
Anisahwati, Nurlaila	9319	p. 15	Chomngam, Pornprom	13316	p. 3
Antonova, Natalia	9446	p. 30	Chong, Yit Sean	12853	p. 20
Arias Jr., Antero Rosauro V.	8616	p. 15	Chorachit, Paranan	9418	p. 27
Ariely, Dan	7635	p. 18	Chou, Chun-Chi	13307	p. 6
Arin, Natthawut	9107	p. 15	Chou, Wei-Lun	9547	p. 32
Asif, Nafisa	8254	p. 8	Chou, Yun Hsuan	9283	p. 43
Atamanova, Inna V.	9369	p. 46	Chu, Chi Meng	13257	p. 11
Au, Winton W.T.	9207	p. 25	Chu, Hsunchi	8863	p. 25
Ayub, Norzihan	8893	p. 20	Chua, Yi Jonathan	9808	p. 14
Azizah, Orysa Noor	6933	p. 41	Chuang, Shih Jung	8253	p. 9
Baccino, Thierry	12579	p. 10	Chuang, Shih Jung	10784	p. 4
Badi, Jamal Ahmed Bashier	12305	p. 14	Chumchua, Vasunun	9058	p. 27
Bae, Sun Hyoung	9519	p. 11	Chumchua, Vasunun	9228	p. 27
Bahr, Mark	7363	p. 43	Chumchua, Vasunun	9418	p. 27
Barakoti, Ramesh	9108	p. 27	Chumchua, Vasunun	11414	p. 4
Baral, Dharanidhar	9108	p. 27	Chutabhakdikul, Nuanchan	9058	p. 27
Baral, Dharanidhar	9113	p. 27	Chutabhakdikul, Nuanchan	9228	p. 27
Baral, Dharanidhar	9358	p. 27	Chutabhakdikul, Nuanchan	11414	p. 4
Barker, Heather Renee	9475	p. 3	Cortese, Domenico	8040	p. 37
Barrameda, Matt	7952	p. 36	Crano, William D.	11971	p. 8
Barua, Rocky	6373	p. 42	Cynthia, Trida	12891	p. 46
bin Abdul Rahman, Abdul Wahab	12305	p. 14	Dadivas, Matt	7952	p. 36
Bofill, Ray Anthony C.	7974	p. 38	Dai, Yu-Tzu	9396	p. 22
Bonn, Gregory Bibby	7221	p. 16	Daud, Noor Amali Mohd	12505	p. 26
Boonyarit, Itsara	9282	p. 25	de Amorim, Ivonete Barreto	13073	p. 46
Bornstein, Robert F.	12138	p. 41	de Castro, Francine Rose A.	6679	p. 39
Bosma, Colin M.	11572	p. 40	de Castro, Francine Rose A.	7952	p. 36
Božek, Maciej	8487	p. 8	De Torres, Dior Grita F.	8467	p. 41
Brunstrom, Jeffrey M.	10559	p. 4	Dedeoglu, Cagdas	9820	p. 40
Buathong, Napakkawat	8884	p. 11	Derya, Dilara	12675	p. 46
Canca, Cansu	9570	p. 5	Dhakal, Hari	12118	p. 42
Cerezo, Anna Gabrielle F.	11383	p. 21	Domondon, Andrew T.	13099	p. 5
Chaiyapan, Maithai	9086	p. 29	Drai-Zerbib, Véronique	12579	p. 10
Chan, Darius K. S.	9207	p. 25	du Toit, Jean	9441	p. 5
Chang, Che-Ming	10997	p. 9	Du, Yu	11571	p. 17
Chang, Chih-lan	9371	p. 32	Dupaix, Zacharias	9224	p. 7
Chang, Jih-Way	12656	p. 6	Dutta, Madhumita	7987	p. 14
Chang, Li-Li	10165	p. 21	Dzul kifli, Mariam Adawiah	12305	p. 14
Chang, Shou-Chi	9143	p. 39	Eleutério, João Marques	9146	p. 19
Chang, Shu-Hung	12955	p. 23	Elias, Sharifah Munirah Syed	5836	p. 4
Chang, Tsai-Hsiu	9730	p. 28	Elisa	12585	p. 43
Chang, Wen-Chang	8585	p. 28	Erskine, John	12868	p. 9
Chao, Li-Fen	9241	p. 29	Faisal, Roslina Ahmad	11591	p. 25
Chee Piau, Wong	7221	p. 16	Faisal, Roslina Ahmad	12469	p. 4
Chen, Cheng-Te	9013	p. 43	Fan, Jun-Yu	8694	p. 22
Chen, Cheng-Te	9682	p. 43	Fan, Sa-Hui	7329	p. 21
Chen, Chi-Chen	8987	p. 43	Farah, Nor M. F.	10559	p. 4
Chen, Chia Cheng	9395	p. 7	Fastame, Maria Chiara	10958	p. 41
Chen, Hui-Ping	9168	p. 20	Fastame, Maria Chiara	11038	p. 6
Chen, Hui-Wen	7329	p. 21	Fauzi, Farah	9662	p. 15
Chen, Jia-Mi	8685	p. 41	Ferrari, Michel	6122	p. 37
Chen, Ju-Hui	12593	p. 15	Fitriana, Efi	9593	p. 46
Chen, Li-Chou	12544	p. 41	Ford, Chad	8851	p. 17
Chen, Li-Jung	7332	p. 11	Friedman, Michael	9572	p. 26
Chen, Li-Jung	7380	p. 11	Fu, Genyue	6122	p. 37
Chen, Miao-Chuan	12955	p. 23	Fujino, Saori	9728	p. 6
Chen, Shan-Wen	8944	p. 25	Fujino, Sayuri	9728	p. 6
Chen, Shiah-Lian	8746	p. 33	Gabriëls, René	9461	p. 5
Chen, Shiah-Lian	9289	p. 23	Gacek, Michał	7601	p. 39
Chen, Yajun	9498	p. 14	Galian, Alison D.	11383	p. 21



## A-Z Index of Authors

Garas, Andrew	7363	p. 43	Jung, Young-Mi	9519	p. 11
Garcia, Melissa	11823	p. 17	Kadir, Nor Ba'yah Abdul	8893	p. 20
Ghimire, Anup	9108	p. 27	Kalayasiri, Rasmon	8884	p. 11
Ghosh, Koushik	9466	p. 37	Kan, Mike	9517	p. 46
Gill, Jason M. R.	10559	p. 4	Kanai, Atsuko	9984	p. 9
Gong, Diankun	11988	p. 46	Kaneda, Hiratoshi	9494	p. 32
Grover, Savitri	11823	p. 17	Kang, Sang Hoon	13241	p. 11
Gunther, York H.	9696	p. 42	Kao, Chin-Cheng	7329	p. 21
Gunther, York H.	11636	p. 31	Kao, Shu-Fang	10460	p. 17
Guo, Feng Davy	7595	p. 20	Karasawa, Kaori	9147	p. 7
Ha, Eunji	9518	p. 22	Karasawa, Kaori	9149	p. 17
Hallak, Yael	7635	p. 18	Karuzis, Joseph	13012	p. 26
Hamdan, Jamaliah	12469	p. 4	Katapodi, Stefania	11035	p. 46
Hang, Lee Sze	10668	p. 17	Katayama, Harumi	9312	p. 32
Hanprathet, Nitt	9041	p. 11	Kato, Fumitoshi	9083	p. 18
Har, Chong Wan	9380	p. 25	Kazama, Junki	12802	p. 28
Hasanat, Nida Ul	9319	p. 15	Ke, Yi-Ju	10165	p. 22
Hatanaka, Kaori	9595	p. 22	Kemsley, Scott	9224	p. 7
Heaney, Claire	9812	p. 31	Kermani, Mohammad S.	12617	p. 22
Hiraishi, Kenji	12802	p. 28	Khalid, Nursyahidah	10287	p. 14
Hirose, Hideo	9313	p. 8	Khalil, Omar	9434	p. 31
Hitchcott, Paul Kenneth	10958	p. 41	Khumsri, Jiraporn	9041	p. 11
Ho, Chia-Chen	9414	p. 30	Kim, Dong-Ha	9592	p. 11
Ho, Chien-Ta	9540	p. 36	Kim, Hye Kyung	8709	p. 9
Ho, Chien-Ta Bruce	8778	p. 36	Kim, Hyekeyeong	9655	p. 9
Ho, Chien-Ta Bruce	8818	p. 36	Kim, Hyeon Jeong	9074	p. 6
Ho, Chien-Ta Bruce	10161	p. 24	Kim, Seoyong	9972	p. 17
Hong, Jihye	9518	p. 22	Kim, Sunhee	9973	p. 17
Hong, Yu-Jue	13110	p. 17	Kimura, Miyako	12603	p. 22
Hong, Yu-Jue	13028	p. 22	Kleyman, Kerry S.	8706	p. 28
Horii, Daisuke	9494	p. 32	Ko, Ren Chuan	10784	p. 4
Hossain, Zakia	8254	p. 8	Kooskora, Mari	12009	p. 31
Hsia, Chia-Lung	10876	p. 4	Kozlova, Natalia V.	9369	p. 46
Hsieh, I-Hui	9387	p. 27	Ku, Po-Wen	7332	p. 11
Hsieh, Jian-Jia	9049	p. 39	Ku, Po-Wen	7380	p. 11
Hsieh, Ling-Yu	8858	p. 6	Kullachart, Rutcharin	12093	p. 39
Hsieh, Ying-Jiun	9049	p. 39	Kummin, Saadiah	12584	p. 9
Hsieh, Ying-Jiun	9168	p. 20	Kung, Jen-Fei	9092	p. 32
Hsieh, Ying-Jiun	9523	p. 24	Kunisawa, Tae	11201	p. 41
Hsu, Kung-Yu	9092	p. 32	Kunkolienker, Kamaladevi R.	8318	p. 19
Hsu, Yu-Fang	9120	p. 22	Kuo-Tang, Lai	10490	p. 8
Hu, Bo-Sien	9013	p. 43	Kuo, Hsien-Chang	8686	p. 21
Hu, Chao	6122	p. 37	Kuwabara, Yumie	9312	p. 32
Hu, Qiao	12129	p. 42	Kynäslähti, Heikki	9198	p. 18
Hu, Xiao	9375	p. 12	Lai, Cheng-Yu	9798	p. 36
Huang, Hsiang-Ping	8694	p. 22	Lai, Jung-Yu	8856	p. 39
Huang, Lan-Ying	9049	p. 39	Lai, Wei-Shu	13028	p. 22
Huang, Lian-Hua	9267	p. 29	Lai, Wei-Shu	13110	p. 17
Huang, Tai-Chu	9682	p. 43	Lalonde, Richard N.	12617	p. 22
Huang, Tsuey-Yuan	9063	p. 15	Lam, Hung-Bun	9241	p. 29
Huang, Tsuey-Yuan	9267	p. 29	Langer, Ellen	11572	p. 40
Huang, Tzeng-Rong	12534	p. 7	Lani, Nur Nadiah	11591	p. 25
Huang, Tzu-Yu	8944	p. 25	Larionova, Anastasia V.	9369	p. 46
Huang, Wen-Shu	12239	p. 31	Larsson, Ernils	8051	p. 40
Huang, Wen-Tzung	8944	p. 25	Lauritzen, Camilla	5905	p. 39
Huang, Yu-Min	8159	p. 10	Lay, Keng-Ling	9092	p. 32
Hudson, Christine	6766	p. 18	Lee Kwon, June	12138	p. 41
Hugaas, Jon	7301	p. 10	Lee, Chih-Chu	8253	p. 9
Hwa Quek, Ai	12853	p. 20	Lee, Ching-Fang	8431	p. 27
Hwang, Shiow-Li	13110	p. 17	Lee, Haenah	12675	p. 46
Hwang, Shiow-Li	13028	p. 22	Lee, Junghuims	9052	p. 11
Hyodo, Yoshimi	9312	p. 32	Lee, Mei-Li	8424	p. 23
Ibrahim, Habiba	11823	p. 17	Lee, Shao-Wei	10876	p. 4
Igarashi, Mika	9715	p. 3	Lee, Tae Kyoung	8709	p. 9
Ip, Pui Shum	9361	p. 40	Lee, Ya-Ling	9267	p. 29
Ishak, Noriah Mohamad	11591	p. 25	Lee, Yi-Chao	8585	p. 28
Ishak, Noriah Mohamad	12469	p. 4	Lee, Yi-Chen	9660	p. 12
Ishii, Ryo	8583	p. 33	Lees, David	7969	p. 20
Itakura, Norimasa	9336	p. 32	Legaspi, Laisa Monika I.	12001	p. 16
Ito, Takamichi	9308	p. 27	Leppiman, Anu	12009	p. 31
Ito, Takamichi	9710	p. 6	Lestari, Made Diah	12849	p. 8
Janardhana, N.	9222	p. 37	Lestari, Made Diah	13019	p. 43
Jiang, Zhuhua	13241	p. 11	Leung, Man-Tak	12164	p. 43
Jibromah, Kate	9453	p. 14	Li, Ting-Yu	8778	p. 36
Jinnatanapong, Duangporn	11414	p. 4	Li, Tongtong	9354	p. 12
Jones, Jennifer K.	12868	p. 9	Li, Tongtong	9375	p. 12
Jos, Aily San	7952	p. 36	Lian, Tam Cai	7221	p. 16

## A-Z Index of Authors

Liang, Tienli	8424	p. 23	Ni, Lee-Fen	8694	p. 22
Liao, I-Chen	8424	p. 23	Ni, Lee-Fen	9396	p. 22
Liao, I-Chen	8746	p. 33	Niraula, Surya Raj	9113	p. 27
Liao, I-Chen	9289	p. 23	Nishimura, Takuma	12931	p. 43
Lie, Kin-Pou	9756	p. 10	Nishiyama, Hisako	9728	p. 6
Lim, Kai Keat	13257	p. 11	Nowlan, Jamie	12297	p. 32
Lin, Chia-Jung	8858	p. 6	Ohashi, Kana	9083	p. 18
Lin, Chien-An	13024	p. 22	Ohashi, Yutaro	9198	p. 18
Lin, Chih-Che	8077	p. 12	Okuda, Aiko	9494	p. 32
Lin, Gung-Huei	12593	p. 15	Okuda, Enji	9494	p. 32
Lin, Hui-Min	9131	p. 32	Okura, Ken	9204	p. 42
Lin, Hung-Ming	10594	p. 17	Ostrower, Chaya	4769	p. 25
Lin, Kuan-Pin	8424	p. 23	Otto, Kathleen	9667	p. 9
Lin, Kuan-Pin	8725	p. 33	Özbek, Mehmet Ferhat	8412	p. 30
Lin, Ming-Bao	8771	p. 36	Özkan, Türker	9817	p. 3
Lin, Ming-Cheng	9730	p. 28	Pagnini, Francesco	11572	p. 40
Lin, Pei-Jung	8828	p. 32	Pagnini, Francesco	11608	p. 40
Lin, Shu-Chun	8694	p. 22	Panganiban, Elaine	7952	p. 36
Lin, Sylvia	9092	p. 32	Pao, Ping-Chieh	8585	p. 28
Lin, Tsan-Chang	12593	p. 15	Park, Jin-Hee	9519	p. 11
Lin, Wei-Chun	8944	p. 25	Park, Sang Hee	9074	p. 6
Lin, Wen-Wen	9115	p. 22	Patosha, Olga	9452	p. 20
Lin, Xing-Chen Chia-Chi	8993	p. 26	Pelupessy, Dicky	9381	p. 3
Lin, Yi-Hua	11094	p. 14	Pelz, Sonna	12174	p. 8
Lin, Yii-Nli	7706	p. 41	Penna, Maria Pietronilla	10958	p. 41
Liu, Chien-Chi	9730	p. 28	Permpoonpattana, Kannika	9418	p. 27
Liu, Chih-Yin	8856	p. 39	Persson, Erik	9753	p. 46
Liu, Hsin-Ping	8858	p. 6	Phanasathit, Muthita	9041	p. 11
Liu, Hsin-Yun	9267	p. 29	Phawo, Phongphan	9293	p. 37
Liu, Jung-Tsun	12498	p. 39	Philips, Deborah	11572	p. 40
Liu, Zhaomin	9354	p. 12	Phillips, Deborah	11608	p. 40
Lo, Hui-Yi	9278	p. 4	Pimthong, Saran	9258	p. 27
Lu, Chueh-Fen	12955	p. 23	Pinggolio, James Philip Ray Vasquez	9260	p. 46
Lu, Hung-Yi	10997	p. 9	Pokheral, Paras Kumar	9113	p. 27
Ludin, Arimi Fitri Mat	9662	p. 15	Poorat, Terapon	13302	p. 3
Luo, Liang	9354	p. 12	Popaitoon, Patchara	11197	p. 42
Luo, Liang	9375	p. 12	Popaitoon, Sujinda	12496	p. 37
Maaulot, Noorlin	11591	p. 25	Poudel, Masum	9113	p. 27
Machi, Takeshi	9320	p. 32	Purkayastha, Dipankar	9466	p. 37
Madsen, Kyle	8851	p. 17	Putri, Wayan Citra Wulan Sucipta	12849	p. 8
Madsen, Kyle	9224	p. 7	Quan Tham, Yee	12853	p. 20
Maekawa, Yumiko	9984	p. 9	Rabinovich, Elaine Pedreira	13073	p. 46
Mammadova, Chinara	8640	p. 26	Rahman, Saemah	12584	p. 9
Mañalac, Gianina Kyla Q.	11383	p. 21	Rahmania, Andi Maulida	10408	p. 3
Manandhar, Nisha	9358	p. 27	Ramli, Shalinawati	12533	p. 30
Manwong, Mereerat	9041	p. 11	Ramli, Shalinawati	12567	p. 30
Marat, Samsunuwiyati	9593	p. 46	Rapee, Ron	12297	p. 32
Marimuthu, P.	9222	p. 37	Ratnasari, Yudiana	11711	p. 37
Math, Suresh Bada	9222	p. 37	Rault, Camille	8704	p. 46
Matsuda, Yuko	8164	p. 41	Razak, Nor Siti Rokiah Abdul	10761	p. 15
Matsuo, Hisako	11823	p. 17	Reece, Andrew	11572	p. 40
Matsushima, Rumi	8931	p. 12	Reilly, Andy	6397	p. 36
McDowall, John	6766	p. 18	Retnaningsih	12891	p. 46
Meel, Mari	12009	p. 31	Rihma, Merle	12009	p. 31
Meservy, Melece	9229	p. 7	Roberts, Sara J.	8412	p. 30
Meshcheryakova, Emma I.	9369	p. 46	Rosli, Noor Aishah	9688	p. 20
Miller, Ronald M.	8851	p. 17	Rospita, Indri Oktavia	12849	p. 8
Miller, Ronald M.	9229	p. 7	Ruksri, Nootchanart	9418	p. 27
Miller, Ronald M.	9232	p. 11	Ryan, Stephen B.	8897	p. 21
Miller, Ronald Mellado	9223	p. 17	Saber, Kourosh	9387	p. 27
Miller, Ronald Mellado	9224	p. 7	Sako, Koyuri	9052	p. 11
Miller, Ronald Mellado	10668	p. 17	Sakurai, Ryosuke	9147	p. 7
Mohamad, Mohd Suhaimi	8893	p. 20	Sarquis, Alessandra	12750	p. 37
Mohamed, Nurul Azmawati	12533	p. 30	Sathirapanya, Chutarat	12863	p. 18
Mohamed, Nurul Azmawati	12567	p. 30	Sathirapanya, Pornchai	12863	p. 18
Mohktar, Mariati	12469	p. 4	Satiadarma, Monty P.	12585	p. 43
Morang, Devatha	11348	p. 10	Schaufeli, Wilmar B.	12129	p. 42
Nakaya, Motoyuki	9320	p. 32	Scott, Theresa	5836	p. 4
Nasir, Rohany	8893	p. 20	Seangpraw, Katekaew	10380	p. 3
Natalya, Ni Putu	12849	p. 8	Selim, Ahmed	9434	p. 31
Natalya, Ni Putu	13019	p. 43	Sentiment, Investor	10674	p. 39
Nebeker, Cara A.	9229	p. 7	Setty, V. Kannappa	9222	p. 37
Nebeker, Cara A.	9232	p. 11	Shea, Sarah	9578	p. 38
Neswald, Sara Elaine	12306	p. 40	Shenoy, Uma	9300	p. 15
Neville, Christine	5836	p. 4	Shenoy, Uma	9415	p. 24
Ng, Andy H.	12617	p. 22	Shi, Huei-Mei	11791	p. 6
Ng, Ting Kin	9047	p. 24	Shih, Chih-Hung	12593	p. 15

## A-Z Index of Authors

Shih, Ching-Lin	8987	p. 43	Umemoto, Takatoyo	9710	p. 6
Shih, Ching-Lin	9283	p. 43	Uprety, Samyog	9113	p. 27
Shih, Ching-Lin	9682	p. 43	Vassallo, Marco	7753	p. 24
Shih, Jerome	6871	p. 30	Velasco, Daniel	8400	p. 19
Shin, Ahyoung	12675	p. 46	Venkataraman, Prabhu	11348	p. 10
Shishido, Takuto	9204	p. 42	Victoriano, Roma Angelica P.	8467	p. 41
Shyu, Shi-Sen	9371	p. 32	Wagas, Rizalyn L.	10212	p. 16
Simasatitkul, Palida	9523	p. 24	Wallraven, Christian	12675	p. 46
Sinkovic, Emily	8851	p. 17	Wang, Arnold	8806	p. 20
Sintonen, Sara	9198	p. 18	Wang, Chen-Ya	11640	p. 21
Sirisumthum, Hiranya	9058	p. 27	Wang, I-An	8253	p. 9
Smolka, Bogdan	8487	p. 8	Wang, I-An	10784	p. 4
So, Choi-Yin Jane	12164	p. 43	Wang, I-an	10876	p. 4
Soeldner, Tobias	9546	p. 8	Wang, Jaesun	9972	p. 17
Soepper, Pascal	12295	p. 10	Wang, Jaesun	9973	p. 17
Solihu, Abdul Kabir Hussain	12305	p. 14	Wang, Juite	8771	p. 36
Srijindarat, Usa	9664	p. 32	Wang, Juite	8806	p. 20
Srioad, Phatane	9721	p. 37	Wang, Jun	9047	p. 24
Stanislaus, Louis	9571	p. 14	Wang, Lie-Huey	8686	p. 21
Staves, David	8851	p. 17	Wang, Mei-Yeh	8746	p. 33
Staves, David W.	9223	p. 17	Wang, Pei-Ya	8858	p. 6
Stocker, Joana Novaes Machado	9051	p. 30	Wang, Qiandong	6122	p. 37
Stroud, Robert	7977	p. 25	Wang, Shu-Chen	12945	p. 23
Su, Ningxin	9375	p. 12	Wang, Song	9308	p. 27
Su, Sheng-Jie	10876	p. 4	Wang, Yu-Hsin	8694	p. 22
Subroto, Untung	12585	p. 43	Wangrunkij, Pajaree	9401	p. 25
Sudirman, Sulasmi	6933	p. 41	Watanabe, Naomi	13017	p. 19
Sugai, Maree	7335	p. 20	Watanabe, Takumi	9147	p. 7
Sulistiowati, Ni Made Dian	12849	p. 8	Watanabe, Takumi	9149	p. 17
Suminar, Dewi Retno	10408	p. 3	Watanabe, Yayoi	9728	p. 6
Sun, Guo-Wei	9682	p. 43	Watanabe, Yayoi	9728	p. 6
Sun, Hui	9308	p. 27	Wattananonsakul, Sittipong	9401	p. 25
Sun, Qingjuan	7585	p. 42	Woodruff, Earl	6122	p. 37
Sun, Wen-Jung	7380	p. 11	Wu, Chen-Tzu	10460	p. 17
Sung, Jong-Sang	9592	p. 11	Wu, Fei-Ling	9557	p. 22
Surakarn, Amaraporn	9405	p. 15	Wu, Hua-Shan	13028	p. 22
Surat, Shahlan	12584	p. 9	Wu, Liang-Chuan	9143	p. 39
Tan, Gabriel	13257	p. 11	Wu, Pei-Chen	8420	p. 28
Tan, Kok Leong	11523	p. 41	Wu, Shu-Yu	12544	p. 41
Tanaka, Tomoko	9052	p. 11	Wu, Su-chen	8744	p. 19
Tanaka, Tomoko	9052	p. 32	Wuthrich, Viviana	12297	p. 32
Tanaka, Tomoko	9595	p. 22	Yamamoto, Emiko	9312	p. 32
Tang, Chin-Hua	12793	p. 6	Yamamoto, Yoshihiko	5867	p. 21
Taris, Toon W.	12129	p. 42	Yang, Chao-Hsiang	8818	p. 36
Tarrosa, Maria Caridad H.	11383	p. 21	Yang, Ying-Chen	8585	p. 28
Tat, Puthsodary	11084	p. 5	Ye, Shengquan	9047	p. 24
Taun, Chih-Yang	7332	p. 11	Yeh, Ting-Kuang	8828	p. 32
Teng, Min-Hung	8792	p. 11	Yeh, Wan-Ting	9387	p. 27
Terzi, Hilal	9817	p. 3	Yen, Hung-Yu	9540	p. 36
Thanasetkorn, Panadda	9058	p. 27	Yim, Kin Hang	9047	p. 24
Thanasetkorn, Panadda	9228	p. 27	Yingyeun, Rungmanee	9041	p. 11
Thanasetkorn, Panadda	9418	p. 27	Yoo, Seunghyun	9518	p. 22
Thanasetkorn, Panadda	11414	p. 4	Yoo, Seunghyun	9592	p. 11
Thassanabanjong, Kitiya	11850	p. 24	Yoo, Seunghyun	9655	p. 9
Theerataweewut, Yingyos	11197	p. 42	Yoon, Nan-He	9592	p. 11
Thitithumrongkul, Tantiya	9228	p. 27	Yoon, Seong-Min	13241	p. 11
Thomas Kinikini, Daniel	9229	p. 7	Ysmael, Maria Patricia R.	11383	p. 21
Thomas, Haley	9229	p. 7	Yu, Hui-Chu	9267	p. 29
Thongmee, Anukool	12863	p. 18	Yu, Mei-Hua	8858	p. 6
Thongtawee, Chollada	9030	p. 14	Yun, Ye-Hwa	9592	p. 11
Tilton, Zachary	8851	p. 17	Yuniarti, Kwartarini Wahyu	6933	p. 41
Timothy, Boyd	8851	p. 17	Zammit, Clive	8234	p. 10
Timothy, Boyd	9224	p. 7	Zhang, Wei	9354	p. 12
Ting, Siuman Raymond	7394	p. 29	Zheng, Jun	9354	p. 12
Ting, Yuan-Yu	9371	p. 32	Zheng, Jun	9375	p. 12
Toyama, Michiko	9750	p. 27	Zulkaida, Anita	12891	p. 46
Trichan, Charlee	12863	p. 18			
Trichan, Jammaree	12863	p. 18			
Tsai, Chang-Hsien	11723	p. 21			
Tsai, Hsin-Jung	12721	p. 6			
Tsai, Hung-Yu	8278	p. 30			
Tsai, Li-Fang	9115	p. 22			
Tsai, Pei-Shan	8746	p. 33			
Tsou, Jen-Hui	8585	p. 28			
Tung, Chun-Ping	13010	p. 6			
Turner, Paul Michael	9842	p. 46			
Uchegbue, Christian Onyenaucheya	13278	p. 19			

# Thank You

Our academic events would not be what they were without a commitment to ensuring adherence to international norms of abstract peer review. We would like to thank the following scholars who have acted as **reviewers** for ACP 2015.

## Senior Reviewers

Andy Ng, York University, Canada  
Angelbert Hernandez, Miriam College, Philippines  
Antero Rosaura Arias Jr., University of Santo Tomas Graduate School, Philippines  
Arian Petoft, Faculty of Law, University of Allameh Tabatabaei, Iran  
Carl Dellomos, University of Caloocan City, Philippines  
Caroline Pulfrey, Lausanne University, Switzerland  
Cheng-Yu Lai, Chung Yuan Christian University, Taiwan  
Chien-An Lin, National Kaohsiung University of Hospitality and Tourism, Taiwan  
Chih-Che Lin, Ming Chuan University, Taiwan  
Chin-Chuan Hung, China Medical University, Taiwan  
Daniel Velasco, Yamanashi Gakuin University, Japan  
Efi Fitriana, Universitas Padjadjaran, Indonesia  
Feng Guo, University of Manchester, UK  
Feng-Lan Kuo, National Changhua University of Education, Taiwan  
Francine Rose De Castro, University of Sto Tomas, Philippines  
Fu-Gong Lin, National Defense Medical Center, Taiwan  
Grand H. L. Cheng, Hong Kong Shue Yan University, Hong Kong  
Hamidah Hamidah, Universitas Airlangga, Indonesia  
Heather Renee Barker, California State University Long Beach, USA  
Hilal Terzi, Middle East Technical University, Turkey  
Hiranya Sirisumthum, Mahidol University, Thailand  
Hui-Wen Chen, Chang Jung Christian University, Taiwan  
Huiping Chen, National Chung Hsing University, Taiwan  
Itsara Boonyarit, Chiang Mai University, Thailand  
Jayson Petras, University of the Philippines, Philippines  
Jerome Shih, University of Minnesota, USA  
Kannappa Setty, National Institute of Mental Health and Neuro Sciences, India  
Kok Leong Tan, International Medical University, Malaysia  
Kuan Yu Lai, National Chung Hsing University, Taiwan  
Lin Yi-Hua, National Taipei University of Technology, Taiwan  
Maciej Bożek, Univeristy of Silesia, Poland  
Marco Vassallo, Council for Agricultural Research and Economics (C.R.A.), Italy  
Maria Chiara Fastame, University of Cagliari, Italy  
Mika Igarashi, The University of Tokyo, Japan  
Miyako Kimura, St. Marianna University, Japan  
Mohammad Muntasir Maruf, National Institute of Mental Health, Bangladesh  
Muenjit Jitsoonthornchaikul, Panyapiwat Institute of Management, Thailand  
Muhammad Hafiz, National Institute of Education, Singapore  
Nitikom Phoosuwan, Kasetsart University Chalermphrakiat Sakonnakorn Province Campus, Thailand  
Norzihan Ayub, Universiti Kebangsaan Malaysia, Malaysia  
Orna Braun-Lewensohn, Ben-Gurion University of the Negev, Israel  
Pan Liu, Nanyang Technological University, Singapore  
Rebecca S. Lau, Open University of Hong Kong, Hong Kong  
Rubina Saxena, Dayalbagh Educational Institute, India  
Ryo Ishii, Nagoya University, Japan  
Samsunuwiati Marat, Tarumanagara University, Indonesia  
Shou-Chi Chang, National Chung Hsing University, Taiwan  
Sujinda Popaitoon, Mahasarakham University, Thailand  
Tantiya Thitithumrongkul, National Institute of Child and Family Development, Thailand  
Tariq Khan, University of Hyderabad, India, India  
Ting-Yu Li, National Chung Hsing University, Taiwan  
Trida Cynthia, University of Gunadarma, Indonesia  
Tsuey-Yuan Huang, Chang Gung University of Science and Technology, Taiwan  
Uma Shenoy, Children and Adult Psychological Services, USA  
Venie Viktoria Rondang Maulina, Atma Jaya Catholic University of Indonesia, Indonesia  
Wangbing Shen, Hohai University, China  
Wei-Chun Lin, Chi Mei Medical Center, Taiwan  
Weilun Chou, Fo Guang University, Taiwan  
Yiling Yeh, Chang Gung University of Science and Technology, Taiwan  
Yoshihiko Yamamoto, Ritsumeikan University, Japan

## Reviewers

Amaraporn Surakarn, Srinakharinwirot University, Thailand  
Armi Grace Desingano, Cavite State University, Philippines  
Chao Hu, University of Toronto, Canada  
Chia-Chen Ho, Sih-Wei Primary School, Taiwan  
Chih Lan Chang, Kaohsiung Municipal Fengshan District Jhong-Jheng Elementary School, Taiwan  
Chih-Yin Liu, Management of Technology, Taiwan  
Chun-Jen Huang, Taipei Tzu Chi Hospital, Taiwan  
Dino Ubalde, St Dominic College of Asia, Philippines  
Elimar Ravina, University of Santo Tomas, Philippines  
Fashola Joseph Omokafe, University of Ibadan, Nigeria  
Guo-Wei Sun, National Sun Yat-Sen University, Taiwan  
Herdiyan Maulana, State University of Jakarta, Indonesia  
Hisako Matsuo, Saint Louis University, USA  
Hsuan-Mien Chiu, Central Police University, Taiwan  
Hui-Yi Lo, National Chung Hsing University, Taiwan  
Hung Yu Yen, Graduate Institute of Technology Management, Taiwan  
Jian Jia Hsieh, Chung Hsing University, Taiwan  
Jih Way Chang, National Taiwan University of Arts, Taiwan  
Jin-Hee Park, Ajou University, South Korea  
John McDowall, Victoria University of Wellington, New Zealand  
Kin-Pou Lie, The Open University of Hong Kong, Hong Kong  
Kitiya Thassanabanjong, Kasetsart University, Thailand  
Li-Jung Chen, National Taiwan University of Sport, Taiwan  
Loreta Vivian Ramel-Galima, Nueva Vizcaya State University, Philippines  
Made Diah Lestari, Udayana University, Indonesia  
Michał Gacek, Pedagogical University, Poland  
Michiko Toyama, Bunkyo University, Japan  
Ming Bao Lin, National Chung-Hsing University, Taiwan  
Palida Simasatitkul, National Chung Hsing University, Taiwan  
Panadda Thanasetkorn, Mahidol University, Thailand  
Paranan Chorachit, Mahidol University, Thailand  
Patchara Popaitoon, Chulalongkorn University, Thailand  
Pei-Chen Wu, National PingTung University, Taiwan  
Phongphan Phawo, Burapha University, Thailand  
Po-Wen Ku, National Changhua University of Education, Taiwan  
Ray Anthony Bofill, University of Santo Tomas, Philippines  
Sadaf Akhtar, University of Warwick, UK  
Sharifah Munirah Syed Elias, The University of Queensland, Australia  
Shu Yu Wu, National Taiwan Normal University, Taiwan  
Stephen Ryan, Yamagata University, Japan  
Takamichi Ito, Kyoto University of Education, Japan  
Takatoyo Umemoto, Nagoya University, Japan  
Wladimir Stroh, National Research University Higher School of Economics, Russia  
Xueyan Wei, Jiangnan University, China  
Yu-Cheng Wang, National Chung Hsing University, Taiwan  
Yudiana Ratnasari, University of Indonesia, Indonesia



# Thank You

Our academic events would not be what they were without a commitment to ensuring adherence to international norms of abstract peer review. We would like to thank the following scholars who have acted as **reviewers** for ACERP 2015.

## Senior Reviewers

Andrew Domondon, Waseda University, Japan  
Arshak Balayan, Yerevan State University / American University of Armenia, Armenia  
Claretta Pam, Walden University, USA  
Clive Zammit, University of Malta, Malta  
Erik Persson, Lund University, Swaziland  
Ernils Larsson, Uppsala University, Sweden  
Ferry Hidayat, Institute for Indonesian Philosophy Studies (IIPS), Indonesia  
Hilaire Tegnau, Andalas University, Indonesia  
Joseph Karuzis, Hokkaido University, Japan  
Madhumita Dutta, Vidyasagar College for Women, India  
Manvitha Singamsetty, University of Ottawa, Canada  
Merle Rihma, Tallinn Health Care College, Estonia  
Mohamed Almisbkawy, Fayoum University, Egypt  
Pascal Soepper, Niigata University, Japan  
Puthsodary Tat, The American University of Afghanistan, Afghanistan  
Qingjuan Sun, Nanyang Technological University, Singapore  
Ruchi Agarwal, Mahidol University International College, Thailand  
Sana Saeed, Harvard University, Japan  
Tariq Khan, University of Hyderabad, India, India  
Yu-Min Huang, National Changhua University of Education, Taiwan

## Reviewers

Adibah Abdul Rahim, International Islamic University Malaysia (IIUM), Malaysia  
Cagdas Dedeoglu, Istanbul Arel University, Turkey  
Chinara Mammadova, Baku State University, Azerbaijan  
Chollada Thongtawee, Silpakorn University, Thailand  
David W. Kim, Australian National University, Australia  
Domenico Cortese, University of Dundee, UK  
Pui Shum Ip, China Graduate School of Theology, Hong Kong  
Ronald Mellado Miller, Brigham Young University - Hawaii, USA  
Sarah Shea, China Graduate School of Theology, Hong Kong  
Su-Chen Wu, Fo Guang University, Taiwan  
Xingchen Chiachi Lin, TamKang University, Taiwan

# upcoming events

For more information on all our latest events, please go to [www.iafor.org](http://www.iafor.org)

## osaka, japan 2015

March 29-April 1, 2015 - ACEID2015 - The Asian Conference on Education & International Development 2015

April 2-5, 2015 - ACAH2015 - The Asian Conference on Arts & Humanities 2015

April 2-5, 2015 - LibrAsia2015 - The Asian Conference on Literature & Librarianship 2015

## kobe, japan 2015

April 30-May 3, 2015 - ACLL2015 - The Asian Conference on Language Learning 2015

April 30-May 3, 2015 - ACTC2015 - The Asian Conference on Technology in the Classroom 2015

May 28-May 31, 2015 - ACAS2015 - The Asian Conference on Asian Studies 2015

May 28-May 31, 2015 - ACCS2015 - The Asian Conference on Cultural Studies 2015

June 11-14, 2015 - ACSS2015 - The Asian Conference on the Social Sciences 2015

June 11-14, 2015 - ACSEE2015 - The Asian Conference on Sustainability, Energy & the Environment 2015

## brighton, uk 2015

July 1-5, 2015 - ECE2015 - The European Conference on Education 2015

July 1-5, 2015 - ECTC2015 - The European Conference on Technology in the Classroom 2015

July 1-5, 2015 - ECLL2015 - The European Conference on Language Learning 2015

July 6-8, 2015 - ECP2015 - The European Conference on Psychology & the Behavioral Sciences 2015

July 6-8, 2015 - ECERP2015 - The European Conference on Ethics, Religion & Philosophy 2015

July 9-12, 2015 - ECSS2015 - The European Conference on the Social Sciences 2015

July 9-12, 2015 - ECSEE2015 - The European Conference on Sustainability, Energy & the Environment 2015

July 9-12, 2015 - ECPEL2015 - The European Conference on Politics, Economics & Law 2015

July 9-12, 2015 - EBMC2015 - The European Business & Management Conference 2015

July 13-16, 2015 - EuroMedia2015 - The European Conference on Media, Communication & Film 2015

July 13-16, 2015 - ECAH2015 - The European Conference on Arts & Humanities 2015

July 13-16, 2015 - LibEuro2015 - The European Conference on Literature & Librarianship 2015

July 13-16, 2015 - ECCS2015 - The European Conference on Cultural Studies 2015

## kobe, japan 2015

October 8-10, 2015 - IICJ2015 - The International Conference on Japan & Japan Studies 2015

October 15-17, 2015 - APSec2015 - The Asia-Pacific Conference on Security & International Relations 2015

October 21-25, 2015 - ACE2015 - The Asian Conference on Education 2015

October 21-25, 2015 - ACSET2015 - The Asian Conference on Society, Education & Technology 2015

October 23-25, 2015 - ACEurs2015 - The ACE Undergraduate Research Symposium 2015

November 5-7, 2015 - ACTIS2015 - The Asian Conference on Technology, Information & Society 2015

November 5-7, 2015 - ACBPP2015 - The Asian Conference on Business and Public Policy 2015

November 12-15, 2015 - FilmAsia2015 - The Asian Conference on Film & Documentary 2015

November 12-15, 2015 - MediAsia2015 - The Asian Conference on Media & Mass Communication 2015



*"The Great Bonfire of Toba" (2014). Photograph Courtesy of Thaddeus Pope*

The International Academic Forum is proud to announce the launch of the first annual IAFOR Documentary Photography Award. This new award seeks to promote and assist in the professional development of emerging documentary photographers and photojournalists (restrictions apply).

**IAFORPHOTOAWARD.ORG**

SUBMISSION DEADLINE: JUNE 1, 2015



@IAFORPhotoAward



Supported by

**ual:** university  
of the arts  
london

**iafor**  
ASIA'S THINK TANK



**CENTRE for  
DOCUMENTARY  
PRACTICE**





Photography by Thaddeus Pope

Join us for the European Conference on  
Psychology & the Behavioral Sciences

Publish before a global audience. Present in a supportive environment.  
Network and create new relationships. Hear the latest research.  
Experience the United Kingdom. Join a global academic community.

If you would like to know more about  
The Second European Conference on Psychology & the Behavioral Sciences  
(ECP2015) please visit the conference website



Facebook

**ecp.iafor.org**

international, intercultural, interdisciplinary  
The International Academic Forum



Website